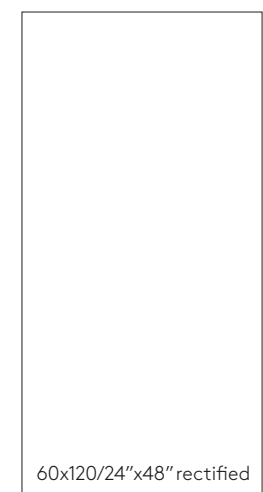




- Hand icon
- Leaf icon
- Starburst icon
- PEI III icon
- Wave icon
- Rectified icon
- Grout icon



60x120/24"x48" rectified

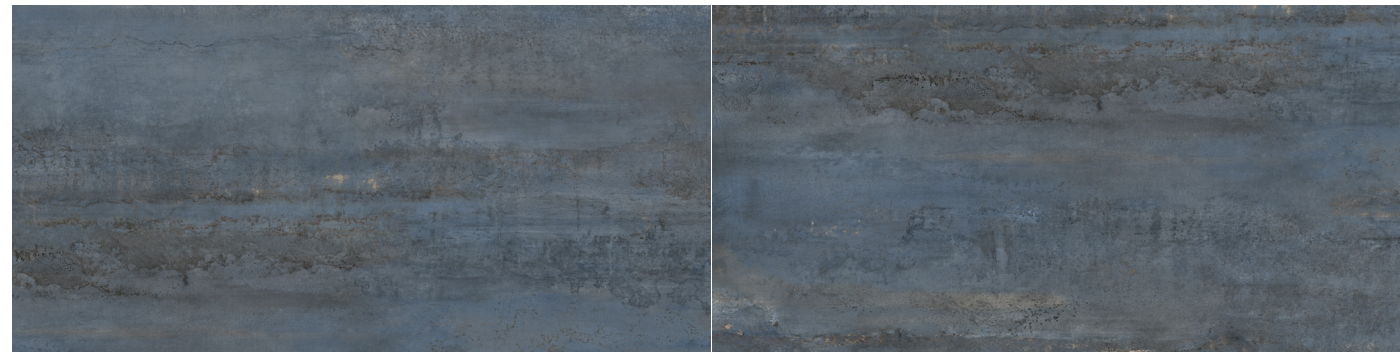




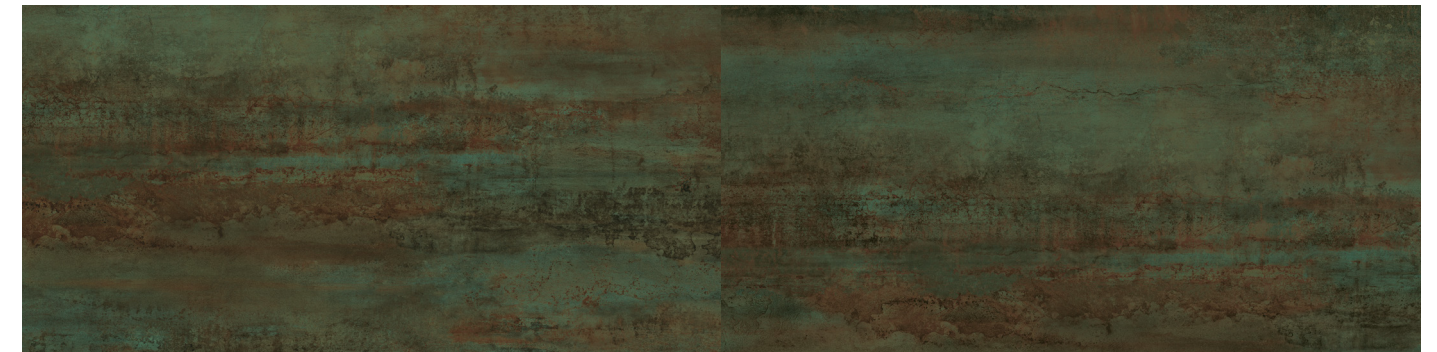
white 60x120/24"x48" rectified



rust 60x120/24"x48" rectified




blue 60x120/24"x48" rectified




turquoise 60x120/24"x48" rectified

color	format cm/in	thk. mm/in	ean code	surface	no. of faces	anti-slip	pei	rectified
white	60x120/24"x48"	10/0,40"	5901503226438	glossy	5	—	III	✓
blue	60x120/24"x48"	10/0,40"	5901503226377	glossy	5	—	III	✓

color	format cm/in	thk. mm/in	ean code	surface	no. of faces	anti-slip	pei	rectified
rust	60x120/24"x48"	10/0,40"	5901503226391	glossy	5	—	III	✓
turquoise	60x120/24"x48"	10/0,40"	5901503226414	glossy	5	—	III	✓













	format cm/in	thk. mm/in	pcs./box	m <sup>2</sup> /sq ft box	kg/lb box	box/pallet	m <sup>2</sup> /sq ft pallet	kg/lb pallet
	60x120/24"x48"	10/0,40"	2	1,44/15,49	32/70,53	30	43,2/465	960/2116

	format cm/in	thk. mm/in	pcs./box	m <sup>2</sup> /sq ft box	kg/lb box	box/pallet	m <sup>2</sup> /sq ft pallet	kg/lb pallet
	60x120/24"x48"	10/0,40"	2	1,44/15,49	32/70,53	30	43,2/465	960/2116

format cm/in	thk. mm/in	pcs./box	m²/sq ft box	kg/lb box	box/pallet	m²/sq ft pallet	kg/lb pallet
<b>mosaic</b>							
mosaic 22x22/9"x9"	9,5/0,38"	10	—	6,5/14,33	—	—	—
mosaic squares 25x25/10"x10"	9,5/0,38"	9	—	10,5/23,15	—	—	—
mosaic rectangles 25x25/10"x10"	9,5/0,38"	9	—	10,5/23,15	—	—	—
mosaic hexagon 28,3x40,8/10"x16"	9,5/0,38"	9	—	13,5/29,76	—	—	—
mosaic squares 30x30/12"x12"	9,5/0,38"	9	—	15,5/34,17	—	—	—
mosaic rectangles 30x30/12"x12"	9,5/0,38"	9	—	15,5/34,17	—	—	—
<b>step tiles / skirtings</b>							
step tile 30x60/12"x24" non-rectified	7,0/0,29"	9	1,62/17,44	23,7/52,25	40	64,8/697,50	970/2138
step tile 30x60/12"x24" rectified	7,0/0,29"	9	1,62/17,44	23,7/52,25	40	64,8/697,50	970/2138
step tile 33,3x33,3/13"x13"	7,2/0,29"	14	—	24/52,90	—	—	—
skirting 8x60/3"x24"	9,0/0,36"	14	—	12,5/27,56	—	—	—
<b>porcelain stoneware</b>							
33,3x33,3/13"x13"	7,2/0,29"	14	1,55/16,68	25/55,1	48	74,4/801	1200/2646
9,2x60/3,6"x24"	7,0/0,28"	11	0,60/6,46	8,60/18,96	96	57,6/620	870/1918
15,5x62/6"x24"	7,0/0,28"	14	1,34/14,23	18,35/40,45	64	85,76/923,11	1200/2646
30x60/12"x24" rectified	7,0/0,28"	9	1,62/17,44	23,7/52,25	40	64,8/697,50	970/2138
30x60/12"x24" rectified	9,0/0,36"	6	1,08/11,62	20/44,08	48	51,84/558	960/2116
30x60/12"x24" rectified	9,5/0,38"	6	1,08/11,62	22/48,50	48	51,84/558	1056/2328
30x60/12"x24" non-rectified	7,0/0,28"	9	1,62/17,44	23,7/52,25	40	64,8/697,50	970/2138
60x60/24"x24" rectified	9,0/0,36"	4	1,44/15,49	28/61,71	30	43,2/465	840/1852
60x60/24"x24" rectified	8,0/0,31"	5	1,80/19,37	30/66,12	30	54/581,25	925/2039
20x120/8"x48" rectified	10/0,40"	5	1,2/12,91	26/57,3	45	54/581	1170/2579
30x120/12"x48" rectified	10/0,40"	4	1,44/15,49	30/66,12	36	51,84/558	1080/2381
60x120/24"x48" rectified	10/0,40"	2	1,44/15,49	32/70,53	30	43,2/465	960/2116

pictograms description

 wall tiles	 floor tiles	 frost resistance
 abrasion resistance pei	 anti-slip	 rectified
 shade spectrum	 mat	 sugar lappato
 polished	 satinato	 shaped surface

		N ≥ 15 cm		
Dimension and flatness of surface Abmessungen und ebenheit der fläche Размер и плоскость поверхности		Test method Testmethode метод	Average value Erzielter Durchschnittswert Среднее	
	Length, Länge, Длина	EN ISO 10545-2	± 0,6%	
	Width, Breite, Ширина		± 0,5%	
	Thickness, Stärke, Толщина		± 3% / max 0,5 mm	
	Deviation of the angle Abweichung vom winkel Отклонение от угла		± 0,05% / max 2 mm	
	Surface flatness Flächenebenheit Плоскость поверхности		± 0,2% / max 2 mm	
Physical properties Physikalische eigenschaften Физические свойства		Test method Testmethode метод	Requirements Anforderungen Требования	Average value Erzielter Durchschnittswert Среднее
	Water absorption Wasseraufnahmevermögen Водопоглощаемость	EN ISO 10545-3	E ≤ 0,5%	0,1% - 0,3%
	Breaking strength Modulus of rupture Bruchkraft Преломляющая сила	EN ISO 10545-4	for thickness, bei d. Stärke, для толщины < 7,5 mm - ≥ 700 N ≥ 7,5 mm - ≥ 1300 N	950 N min 1500 N
	Flexural tensile strenght Biegefestigkeit Прочность при изгибе	EN ISO 10545-4	≥ 35 N / mm²	35 N / mm²
	Abrasion resistance Abriebfestigkeit Стойкость к абразивному износу	EN ISO 10545-7	According to the manufacturer's declaration, laut Herstellererklärung, согласно декларации производителя	III PEI
	Termal shock resistance Widerstand gegen Temperaturschock Устойчивость к термическим нагрузкам	EN ISO 10545-9	requirements erforderlich требуемая	resistant beständig стойкие
	Crazing resistance Rissbeständigkeit Устойчивость к растрескиваниям шг	EN ISO 10545-11	requirements erforderlich требуемая	resistant beständig стойкие
	Frost resistance Frostbeständigkeit Морозостойкость	EN ISO 10545-12	requirements erforderlich требуемая	resistant beständig стойкие
	Resistance chemicals Chemische Beständigkeit Химическая стойкость	EN ISO 10545-13	min. B	A, LA, HA
	Resistance to staining Fleckempfindlichkeit Стойкость к изменению цветового тона	EN ISO 10545-14	min. 3	5
	The release of lead and cadmium Freisetzung von Blei und Cadmium Высвобождение свинца и кадмия	EN ISO 10545-15	Cd 0,07 mg/dm² Pb 0,8 mg/dm²	0 0
	Slip resistance Rutschhemmung Противоскользящие свойства	DIN 51130	According to the manufacturer's declara- tion, laut Herstellererklärung, согласно декларации производителя	-