
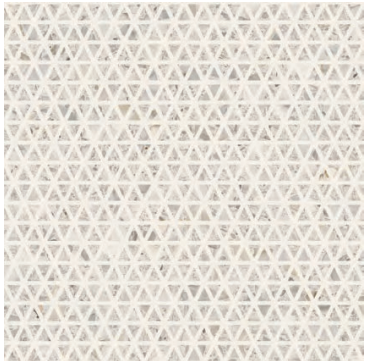




**VENEZIA CREAM**  
90 X 90 / 36" X 36" REC.   
90 X 90 / 36" X 36" REC. NPLUS

**N9A1**  
**N9C1**




**VENEZIA RIALTO CREAM**  
90 X 90 / 36" X 36" REC.   
90 X 90 / 36" X 36" REC. NPLUS

**N9A2**  
**N9C2**



90 X 90 / 36" X 36" **8 PIECES / 8 PIEZAS**

TECHNICAL FEATURES — CARACTERÍSTICAS TÉCNICAS

-  **PORCELAIN TILES**  
PORCELÁNICO
-  **WALL TILES**  
REVESTIMIENTO
-  **FLOOR TILES**  
PAVIMENTO
-  **MATT**  
MATE
-  **GLOSS**  
BRILLO
-  **POLISHED**  
PULIDO
-  **RECTIFIED**  
RECTIFICADO
-  **DESTONIFIED V2**  
DESTONIFICADO V2
-  **GRAPHIC VARIATION**  
VARIACIÓN GRÁFICA

PACKING LIST — LISTA DE EMBALAJE

FORMATO SIZE	PIEZAS PIECES	Kg.	m <sup>2</sup>	CAJAS BOXES	m <sup>2</sup>	Kg.	CAJAS BOXES	m <sup>2</sup>	Kg.
90 X 90	2	37,00	1,61	40	64,51	1.480			



90°



Wall Tile / Revestimiento **VENEZIA RIALTO CREAM** 90 X 90 REC. NPLUS  
Floor Tile / Pavimento **VENEZIA CREAM** 90 X 90 REC. NPLUS