

# Porcelanosa Facades

Your guide to open-joint porcelain cladding solutions



The facade is one of the most characteristic elements in any type of building since it is virtually the only part that can be seen from the outside. That is why its design and construction are so important.

We are proud to present this catalog, designed specifically for architectural and design professionals. It showcases a variety of façade systems that can be adapted to meet the most demanding requirements of any project.

The materials featured have been carefully selected from the PORCELANOSA's Group assortment.



# Contents

1. Our history	p 7
2. Butech	p 8
3. World leader	p 11
4. Architecture at its finest	p 12
5. Quality and sustainability	p 15
6. Certifications	p 16
7. Advantages	p 18
8. Projects	p 24
9. Exterior porcelain panels	p 48-101
· Concrete	
· Marble	
· Metal	
· Stone	
· Technic	
· Terracota & Terrazo	
· Wood	
10. Facade types	p 102



# Our history



Name: PORCELANOSA Manhattan  
Flagship Store  
Location: 202 Fifth Ave. New York



Construction of Porcelanosa Headquarters  
Office Building in Villarreal (Spain) 1973

Porcelanosa was founded over 45 years ago in Villarreal, a small village by the Mediterranean Sea in Castellon, Spain. Since then, we have been providing you with architectural and design solutions with unparalleled innovation, quality, and service. The family who originally founded Porcelanosa back in 1973 still runs it today under the same core values of work ethics and integrity.



# Butech

2

Butech is the engineering subsidiary of Porcelanosa Grupo dedicated to research and development of constructive solutions, as well as project execution. It was founded in 2001 with the objective of developing high-quality materials for the installation of flooring and cladding, and has evolved to become a division specializing in architecture and engineering consultancy services, with a focus on technological innovation.

Currently, the company specializes in three main areas: construction products and systems, modular construction, and façade projects.







# World Leader

Porcelanosa is a world leader in the installation of ceramic and solid surface facades.

With over 500,000 m<sup>2</sup> of ventilated facades installed, Porcelanosa is the global leader in the installation of ceramics and porcelain panels.

With over 5,000 employees and logistic centres around the world we guarantee quality, efficiency and ensure success.

Porcelanosa is a leader in technical solutions, innovative systems, and is committed to developing new tools for our ever changing market.

# 3

Name: PW Whitehouse  
Location: Vancouver, Canada  
Architecture: Buttjes Architects  
Photography: Michael Elkan



# 4

Architecture is continuously evolving. So much so that new trends are constantly emerging, both in project design and in material selections.

The façade plays an important role, not just esthetically, but technically as well, contributing to the architectural ensemble's energy efficiency.

We offer our customers personalized technical support and assist them in the development of façade solutions for their project.

As the engineering subsidiary for the Porcelanosa Grupo, Butech also leads the research and development of new technologies for ceramic and porcelain panels for ventilated façade systems.

Name: The Clare Building  
Location: Manhattan, New York, USA  
Architect: Manuel Glas Architects  
Photography: Imagen Subliminal

# Architecture at its finest







PORCELANOSA Grupo is at the forefront in terms of production, R&D, and technical innovation in the ceramics industry, offering technologically advanced products with superior aesthetic features and unbeatable quality standards

With its potential use for new builds or retro fit construction, BUTECH'S VF will provide significant improvement in the façade thermal behavior and reduce the incident of solar radiation on the enclosure by 80%. This allows for an easy continuous installation of the thermal insulation which allows us to eliminate thermal bypasses and achieve greater improvement in our energy efficiency

Our commitment to use recycled materials in our ceramics, combined with the recycling levels in our structures, allows us to collaborate in securing the highest levels of LEED certification.

Name: Rosa Jardón 16  
Location: Madrid, Spain  
Architecture: Emase Arquitectura  
Photography: Imagen Subliminal

# Quality and sustainability

# 5



# Certifications

## Third-Party Tested



### ICC-ES Report #ESR-3343

Choosing an innovative exterior cladding system that complies with building codes means you and your client are selecting a product that meets safety and performance standards, ensuring a durable and compliant exterior system.

We are the FIRST porcelain panel rainscreen façade system to receive ICC-ES certification

Compliance with:

- IBC 2009, 201 & 2015
- California Green Building Standards Code
- California Building Code
- Florida Building Code



### Florida Product Approval – FL-20391

The Florida Building code requires all exterior wall panels be tested and registered with the State through their product approval program.

You will find out exterior porcelain cladding system's TER (Technical Evaluation Report) on our website:

[www.porcelanosafacades.ca/resources](http://www.porcelanosafacades.ca/resources)



### American Architectural Manufacturers Association (AAMA) – AAMA 509-9

Our system has been successfully tested under the AAMA 509-9 standard "Voluntary Test and Classification Method of Drained and Back Ventilated Rain Screen Wall Cladding Systems."

# Facade system

# 6

Porcelanosa facades offer a complete Open Joint Porcelain Cladding System (OJ-PC System) that includes the cladding, support for cladding, framing, and attachments, unlike many cladding manufacturers who only provide the cladding itself.

Porcelanosa facades system offers a OJ-PC system with a 10 year warranty, providing a single point of responsibility for the entire exterior cladding and support system, reducing risks for both the contractor and building owner.

Our OJ-PC system has been used and tested for over 20 years - on hundreds of project types and conditions. So you can sleep at night knowing it'll work for you. Freeing you up to focus on those 1,000 other decisions you need to make.

### What others are saying

"What we found especially attractive about Porcelanosa Facades was that they were providing a fully engineered cladding system, including shop drawings, and they were precutting the panels to fit the complex geometry. They were still very competitive with the cost of other ventilated facades as well, which made it an especially attractive solution. Also, you get the added value that the porcelain panels are a very durable product that is scratch and graffiti resistant - which was important because this was a school building. The aesthetic - it's a very sharp looking system."

Cosmin Vrajitoru, President  
ARCHEO Design Studio, Chicago, IL





## An Effective Drainage, Thermal & Acoustical Solution

7

“A ventilated tile façade can reduce a building’s energy consumption 20-30% due to the chimney effect it creates between the structure and the cladding. Hot air is evacuated in summer, and insulation is more effective in winter.”

TCNA (Tile Council of North America)

One of your envelope design goals for your client’s building is to ensure maximum energy savings and noise reduction to your buildings.

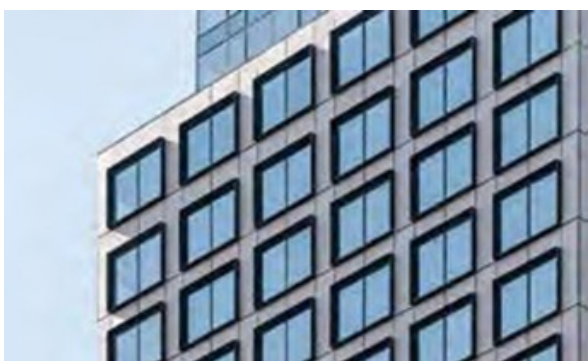
Our OJ-PC system provides you with an ideal solution while preserving the beauty of the Porcelanosa Facades exterior porcelain cladding panels. This design allows you to use the Open Joint Porcelain Cladding system on new construction or to renovate or re-clad an existing building

The system is classified as a Drained/Back Ventilated Rainscreen. Its open joint porcelain cladding panels, continuous insulation and thermally-broken support system help you:

- Keep bad weather out to reduce mold through efficient heat and moisture removal -- improving indoor air quality for the building users, and mitigating your building structure's deterioration.
- Achieve R-values from 9.1 to 24 - retaining more heat in colder months, keeping cooler in warmer months.
- Absorb outside noises by 10-15 dB – another way you can contribute to healthier indoor environments.

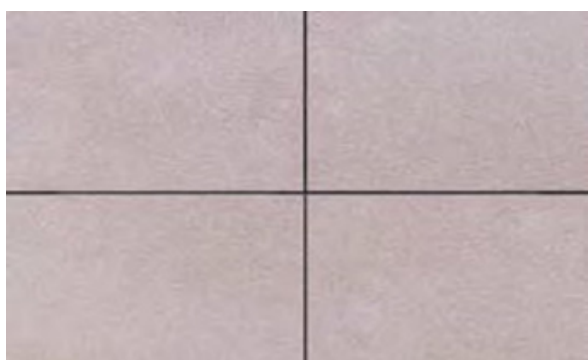
The Alexey Luxury Residencies in  
Brooklyn NY  
ND Architecture & Design

# Advantages of porcelain panels facades



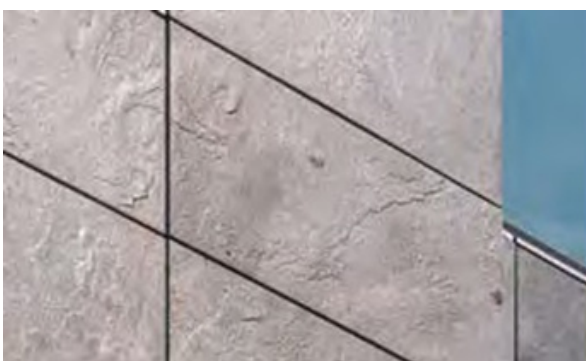
## Exceeds all ICC Fire Resistance Requirements

Porcelain cladding is a natural non-combustible material. When coupled with our open joint cladding system, you'll meet all fire code requirements, including ASTM E119, NFPA 285 and ASTM E136



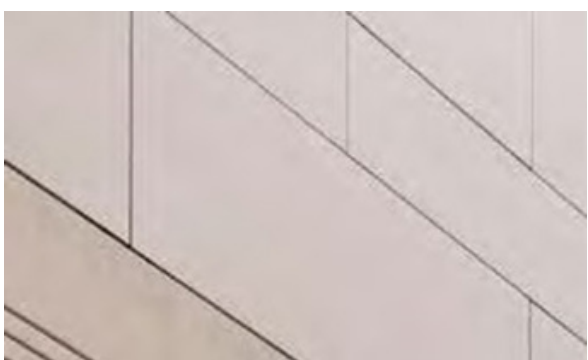
## Non-Porous and Graffiti-Proof

With 0.1% water absorption, our porcelain panels are impervious. So, you don't need any protective coatings. And you don't need any special solvents to clean graffiti... just use denatured alcohol and the graffiti easily wipes away.



## Made from earth-sourced materials

You get a truly weather-proof material that's beautiful and long-lasting with porcelain cladding panels we engineer from the earth. We source our raw materials (like kaolin, quartz, and feldspar) from the areas surrounding our advanced manufacturing facilities in Castellon, Spain. Providing a low carbon footprint, and a finished exterior product for your building's facade that's engineered to endure.



## Freeze-Thaw Proof

Our exterior porcelain panels exceed the requirements of ASTM C1026 for freeze-thaw cycling, without cracking. Even cut, exposed areas such as kerf saw cuts, mitered corner joints, or open corners don't need sealing or coating. That means one less worry for you and less building maintenance headaches for your client.





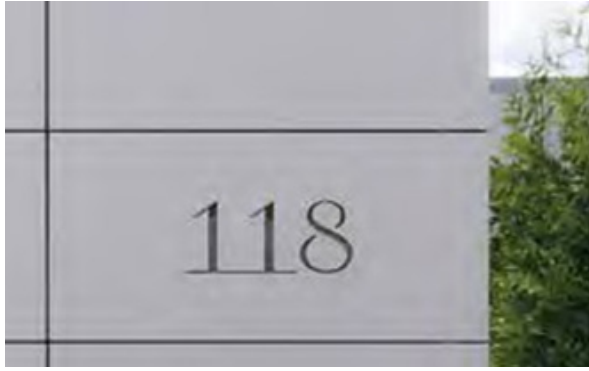
# An all-weather material

Exterior porcelain cladding panels will stand up to the harshest of conditions. As part of your rainscreen wall system, porcelain cladding helps keep your building interior warm in cold temperatures. And in the hot summers, porcelain helps keep your building cool.



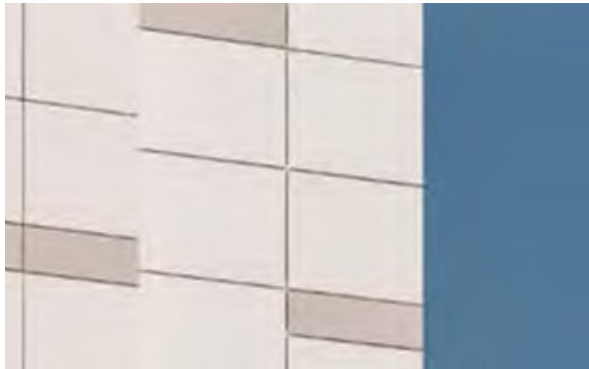
# Does not rot or delaminate

Our porcelain cladding panels are not layered or made from a wet slurry. Our modern manufacturing process ensures your exterior porcelain panels are highly dense, strong, and completely resistant to rot or delamination.



# Factory-Rectified

We rectify your porcelain panels at the factory before they leave the production line. “Rectified” means we grind the panel's edges after firing, so the size is more precise. This also means no shrinking or expansion of the panel after it's installed on your building's exterior facade.



# High UV Resistance

The ingredients of our porcelain panels and our patented manufacturing process gives your building's exterior facade a finish that's resistant to UV degradation for the lifetime of the panel.



# Maintenance-Free

The high density and extremely low absorption rates of porcelain cladding panels don't allow dirt or graffiti to stick to them. Installed in an open-joint cladding system, there is no efflorescence, no drips, and no stains. So your cladding is maintenance-free.



# Thermally-Efficient

Our open joint porcelain cladding system is thermally broken. We've designed it to meet the strictest IECC guidelines. With effective R values of up to 23.5 and U- factors as low as 0.038, our exterior cladding system lets you design freely knowing you'll meet the latest energy code requirements.



# True Aesthetic Versatility

With porcelain cladding, you can achieve classic, traditional, modern, decorative, or distinctive looks for your exterior facades. And you can even design your own porcelain panel. Our porcelain panels are tougher than stone with greater design flexibility. You get superb technical performance with any look you create. From rich textured woods to shiny metallics, to natural stone and concrete finishes. Your design freedom is here.



# Critter Proof

There are no materials in our Open Joint Porcelain Cladding system to attract insects or woodpeckers. So critters won't want to settle in your building's facade.



Partial View of Courtyard by Marriott in NYC



Detail View of O2 Boutique Condos in Toronto

## Engineered to Perform

Over the years, we’ve engineered the Open-Joint Porcelain Cladding System (“OJ-PC system”) to help you meet the increasing code demands:

- Allowing for thermal expansion movement, so it’s ready for the most extreme conditions.
- Resisting wind loads up to 213 mph to protect the building’s occupants and valuable contents.
- Self-leveling, making the system easier for installers, no shimmiing required.
- Its self-supporting system weighing only 6 lbs/sf to minimize the impact on your building’s structure.

You will also get a Class A Fire Rating, meaning you can use the system as an interior wall finish, while meeting NFPA 285 for your exterior finish.

## Design Flexibility

The OJ-PC system offers you design flexibility to achieve the look you need for your building’s exterior facades. Our goal was to design a cladding system that allows you to bring all your design ideas and inspirations to life.

The system can be modified and/or customized for any project type you have on the boards - from residential and commercial projects to multi-family or high-rise buildings. We have a technical team dedicated to helping you find the proper porcelain cladding solution for your facade design.

Your project is unique. So please contact us to see all the ways we can help you make your exterior cladding design go more smoothly.

Ventilated facades using porcelain offer versatility, an environmentally friendly “chimney effect” for natural ventilation and superior performance due to porcelain’s durability and resistance to harsh conditions, leading to energy savings and reduced maintenance.

All this combines to make our Open-Joint Porcelain Cladding System the perfect exterior envelope option for a new or existing building. By creating several protective layers around your building’s exterior envelope.

And, since our OJ-PC system is all provided by a single manufacturer, you get a turnkey solution with a better warranty.



# Projects

# 8

## 321 White ave

This luxurious 19-story residential building with 130 apartments, located in the Brooklyn district, features the signature of ND Architecture and Design and is distinguished by its imposing ventilated facade. Spanning 24,000 square meters, the main structure of 321 White Ave has incorporated PORCELANOSA Grupo's Ferroker Titanio porcelain panels to enhance its acoustic insulation and reinforce the sustainable architecture aimed at combating global warming and the city's energy wastage.

The intervention of Deluxe Builders' technical team was crucial in shaping the facade and ensuring that Porcelanosa's envelope was correctly installed while respecting the architectural criteria of the project.



Location: New York, EE.UU.  
Architecture: The Stephen B. Jacobs Group PC  
Photography: Subliminal Image





# The Esplanade

Backstage On The Esplanade is a new high-rise condominium building, located in the middle of downtown Toronto, Canada. The building has over 280 luxurious units throughout its 34 stories, and it is located near the Scotiabank Arena, Meridian Hall, the historic St. Lawrence Market and the CN Tower.

The building offers contemporary designed 1, 2 and 3 bedroom units along with a landscaped terrace, an outdoor pool, a fitness center and more.

Backstage On The Esplanade features a façade that is comprised of glass panels with dark metal accents – and is complemented by a ventilated rainscreen facade with over 25,000 square feet of Porcelanosa's Toronto Caliza porcelain panels.

Location: Toronto, Canada  
Architecture: Page+Steele Architects  
Photography: Imagen Subliminal



# PW Whitehouse

The elegant reflective surface of these Xtone panels attract light allowing the building to blend in completely with its surroundings.

The building, which faces Sunset Beach (Vancouver, Canada), was built in the 1970s. Recently, Buttjes Architecture redesigned the façade of the block and the lobby with materials provided by Porcelanosa, which perfectly execute the contrast between black and white.

This building, an example of brutalist architecture, has been transformed into a residential complex with nineteen fully-equipped residences. The incorporation of white on the façade has nautical connotations due to the building's proximity to the sea and the influence of the mist that regularly blankets the Canadian city.

Location: Vancouver, Canada  
Architecture: Buttjes Architects  
Photography: Michael Elkan





# 80 St. Clair

80 St. Clair is a high rise residential building located in the Deer Park neighborhood of Toronto, Canada -consisting of studios, one bedroom, and two bedroom units. It is close to David A. Balfour Park, and a short drive away from Downtown Toronto.

80 St. Clair's 28 story ventilated façade is covered in over 38,000 square feet of On Beige Nature porcelain panels. The On Beige Nature panels were created in a unique 23"x47" size, and complement the building's concrete balconies.

This ventilated façade helps to increase the value of the building and to decrease the building's overall heating and cooling costs.

Location: Toronto, Canada  
Architecture: Norman Lee & Associates Ltd.  
Photography: Imagen Subliminal





# 5 Court square

This 11-floor glazed building with 58 apartments is located on Long Island. It consists of two symmetrical glass towers on which Ferroker metallic porcelain panels (by STON-KER®, Porcelanosa) have been fitted, Butech's concealed clip system was used to emphasize the geometric lines and right angles.

Location: New York, USA.  
Architecture: MY Architect PC  
Photography: Subliminal Image



# Alta LIC tower

Alta LIC is a 44 story high-rise luxury building that has over 460 residential units within it. Located in Long Island City area of Queens, New York, this building has emerged as one of the tallest in the area and one of the tallest in the world with porcelain panels. The building is located near multiple subway and train lines, and the overall ventilated façade design helps to soundproof the building from the bustling trains that pass by and overall noise outside.

Designed by Stephen B. Jacob Group, Alta LIC features Porcelanosa's textured and dimensional Cubica Black panels, which are primarily used near the ground levels and entrances of the building, while the bright Extreme White porcelain panels soar and extend up the unique ventilated façade design.

Location: New York, USA.

Architecture: The Stephen B. Jacobs Group PC

Photography: Subliminal Image





# The Leyton

New skyscraper The Leyton is located on New York's Third Avenue, measures 150 metres tall and benefits from spectacular views over one of the most famous parks in the world. Still under construction, this Art Deco inspired building has been designed by architect Manuel Glas, and will house up to 38 residences including 10 full-floor residences, amenities such as a swimming pool, spa and gym, and offices for the healthcare sector.

The 30-floor tower soars into the sky, with a structure combining glass and ceramic materials, and construction systems from Porcelanosa Group. Specifically, it features the Solidker technical porcelain model in a 59.6 cm x 180 cm format, tailor-made for the project, and Butech's ventilated façade system with a concealed anchoring system. The system is used to affix the ceramic tiles without having any visual impact on the building's exterior, and is ICC Evaluation Service certified, endorsing it for use across the whole of the United States.

Location: New York, USA.  
 Architecture: Manuel Glas Architect  
 Photography: Subliminal Image





# 15 East 19 St.

15 E 19th Street is a new residential building located in the Flatbush area of Brooklyn, New York.

The building is close to the southern area of Prospect Park, and towers over a rare cul-de-sac in the middle of Brooklyn. Its 8 story structure houses 33 oversized 1 and 2 bedroom apartment units.

The light grey façade of 15 E 19th Street is comprised of 2 different large format sizes of Boston Topo that are laid horizontally across the building in a staggered pattern. Architects RoART created this as a subtle nod to imitate the vintage brickwork on the older Victorian houses that used to inhabit the area. Additionally, our double siding porcelain cladding application reinforces the concept of a cladding veneer or skin. This solution eliminates the need for window closures and offers notable cost savings.

Location: New York, USA.  
Architecture: Roart Architects  
Photography: Subliminal Image





# The Clare

With an open-plan structure containing 30 de-luxe apartments, The Clare which reaches up into the New York sky above Upper East Side, has been built using PORCELANOSA Grupo. collections.

Designed by the Manuel Glas Architects studio, the core of this 19-storey building offers stunning views of the Big Apple thanks to its enormous picture windows and cutting-edge façade. Its open symmetrical lines filter the light entering the building, connecting life inside it to the rhythm of a city that never sleeps.

As in the Jenga tower game, the 2,508 square metre ventilated façade consists of symmetrical volumes in an irregular pattern, specially designed for the project to create an Opus pseudo isodorum, with interlocking rows of tiles. The hidden fastening system, created and supervised by the façade Department of Porcelanosa USA, lightens the main block with large format Porcelanosa technical tiles in cream, emphasising the industrial style that has characterised New York's architecture in recent years.

Location: New York, USA.  
Architecture: Manuel Glas  
Photography: Leonard Mascaro



# Fitler nine townhouses

Located in the Fitler Square area of Philadelphia, Pennsylvania, Fitler Nine is a set of nine luxurious four-story townhomes. The townhomes vary between 5,000 square feet and 5,800 square feet, and feature a number of amenities for its residents.

Architects QB3 worked with us through our Design Assist program to find the perfect porcelain panels for this ventilated façade project. They looked through our stone series of porcelain and wanted to create a livelier façade design by using a warmer toned product.

They decided to move forward with using 10,000 square feet of our Boston Bone and Boston Topo porcelain panels. The lighter Boston Bone shade was used as a base, and the Boston Topo tone was used intermittently throughout the design as an accent.

Location: Philadelphia, USA.  
Architecture: QB3 Design  
Photography: Subliminal Image





# The Nevins

The Nevins is a modern high-rise residential building that is located in the trendy Boerum Hill area of Brooklyn, New York. It is close to the Fort Greene Park, the Brooklyn Academy of Music, and the Brooklyn Bridge.

The 21 story building houses 73 different residences that range from studios to 3 bedroom units that take up entire floors.

Issac & Stern Architects worked with Porcelanosa to find the perfect texture and color for their façade design. The Nevins is completely covered in 21,000 square feet of Porcelanosa's concrete-look Dover Arena porcelain panels, which were cut down to 12 3/8" x 47" panels specifically for the project.

Location: New York, USA.

Architecture: Brent M. Porter & Isaac + Stern arch

Photography: Subliminal Image



# Hotel Courtyard by Marriot

Courtyard By Marriott New York Manhattan Midtown West is a new high-rise hotel building, which is located in the Midtown area of Manhattan, New York.

The hotel building is within walking distance of Penn Station, the High Line, the Vessel, shops and restaurants in Hudson Yards, and the Javits Center.

The building hosts over 370 rooms, a bar and full-service restaurant, fitness center, business center, and a 1,700 square foot meeting space that can accommodate up to 90 people throughout its 29 floors.

Courtyard By Marriott's façade features 62,000 square feet of Porcelanosa's Town White and Town Niquel porcelain panels. The Town White panels are used as the main product throughout the façade's overall design, and the smaller Town Niquel panels act as an intermittent decorative accent.

Location: New York, USA.  
Architecture: DSM Design  
Photography: Subliminal Image



# Exterior porcelain panels

9

**X**TONE XLIGHT **PAR-KER** **STON-KER**

# Concrete

**STONKER  
PARKER  
XLIGHT  
XTONE**  
> 6mm / 1/4" Porcelain Panels  
> 6mm / 1/4" Porcelain Panels wood finish  
6mm / 1/4" Large Format panels  
6mm / 1/4" & 12mm / 1/2" Large Format panels

Bottega Acero  
Bottega Acero Nature  
Bottega Antracita  
Bottega Antracita Nature  
Bottega Caliza  
Bottega Caliza Nature  
Bottega White  
Cancún Caliza  
Cancún Sand  
Cancún Stone  
Metropolitan Antracita  
Metropolitan Caliza  
Metropolitan Silver  
Newport Dark  
Santorini Grey  
Santorini Taupe  
Stark Grey Nature  
Stark White Nature  
Terra Bone  
Terra Clay  
Terra Topo  
Urban Acero Nature  
Urban Black Nature

Urban Caliza Nature  
Urban Natural Nature  
Vela Grey  
Vela Natural  
Vela Smoked  
Tadelakt Grey  
Tadelakt Sand  
Tadelakt Smoke



# Concrete



### Bottega Acero

Size		Thickness		SAP code
59,6 x 120 cm	24" x 48"	11,5 mm	7/16"	100315811
59,6 x 180 cm	24" x 71"	11,5 mm	7/16"	100245332
120 x 270 cm	47" x 106"	6 mm	1/4"	100332601

Available finishes: Matt



### Bottega Acero Nature

Size		Thickness		SAP code
120 x 270 cm	47" x 106"	6 mm	1/4"	100332601
160 x 320 cm	63" x 126"	6 mm	1/4"	100336827
160 x 320 cm	63" x 126"	12 mm	1/2"	100343416

Available finishes: Matt



### Bottega Antracita

Size		Thickness		SAP code
59,6 x 120 cm	24" x 48"	11,5 mm	7/16"	100281592

Available finishes: Matt



### Bottega Antracita Nature

Size		Thickness		SAP code
160 x 320 cm	63" x 126"	6 mm	1/4"	100343419
160 x 320 cm	63" x 126"	12 mm	1/2"	100334151



### Bottega Caliza

Size		Thickness		SAP code
59,6 x 120 cm	24" x 48"	11,5 mm	7/16"	100280172
59,6 x 180 cm	24" x 71"	11,5 mm	7/16"	100245307

Available finishes: Matt



### Bottega Caliza Nature

Size		Thickness		SAP code
120 x 270 cm	47" x 106"	6 mm	1/4"	100332186
160 x 320 cm	63" x 126"	6 mm	1/4"	100335161
160 x 320 cm	63" x 126"	12 mm	1/2"	100343421



### Bottega White

Size		Thickness		SAP code
59,6 x 120 cm	24" x 48"	11,5 mm	7/16"	100315781
59,6 x 180 cm	24" x 71"	11,5 mm	7/16"	100315889

Available finishes: Matt



### Cancún Caliza

Size		Thickness		SAP code
59,6 x 120 cm	24" x 48"	8,5 mm	5/16"	100355127
120 x 120 cm	48" x 48"	8,5 mm	5/16"	100355044

Available finishes: Matt and Polished  
1/2 "(12 mm) thickness available for orders of > 7,000 SF (650 m2)

# Concrete



### Cancún Sand

Size		Thickness		SAP code
59,6 x 120 cm	24" x 48"	8,5 mm	5/16"	100355130
120 x 120 cm	48" x 48"	8,5 mm	5/16"	100355047

Available finishes: Matt  
1/2 "(12 mm) thickness available for orders of > 7,000 SF (650 m2)



### Cancún Stone

Size		Thickness		SAP code
59,6 x 120 cm	24" x 48"	8,5 mm	5/16"	100356165
120 x 120 cm	48" x 48"	8,5 mm	5/16"	100356154

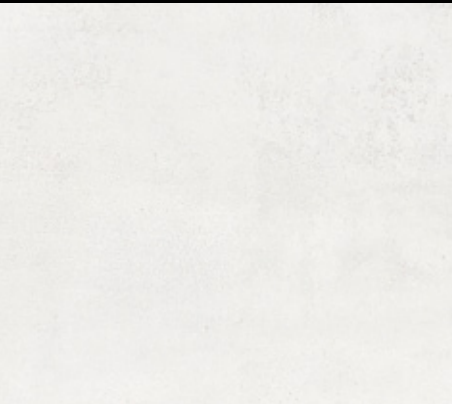
Available finishes: Matt  
1/2 "(12 mm) thickness available for orders of > 7,000 SF (650 m2)



### Metropolitan Antracita

Size		Thickness		SAP code
59,6 x 59,6 cm	23" x 23"	8,5 mm	5/16"	100325223

Available finishes: Lapped and Polished  
1/2 "(12 mm) thickness available for orders of > 7,000 SF (650 m2)



### Metropolitan Nature Caliza

Size		Thickness		SAP code
59,6 x 59,6 cm	23" x 23"	8,5 mm	5/16"	100325196

Available finishes: Polished  
1/2 "(12 mm) thickness available for orders of > 7,000 SF (650 m2)



### Metropolitan Silver

Size		Thickness		SAP code
59,6 x 59,6 cm	23" x 23"	8,5 mm	5/16"	100324773

Available finishes: Lapped and Polished  
1/2 "(12 mm) thickness available for orders of > 7,000 SF (650 m2)



### Newport Dark

Size		Thickness		SAP code
59,6 x 59,6 cm	23" x 23"	8,5 mm	5/16"	100325199

Available finishes: Matt and Polished  
1/2 "(12 mm) thickness available for orders of > 7,000 SF (650 m2)



### Santorini Grey

Size		Thickness		SAP code
59,6 x 120 cm	23" x 48"	8,5 mm	5/16"	100355121
120 x 120 cm	48" x 48"	8,5 mm	5/16"	100355038

Available finishes: Matt and Polished  
1/2 "(12 mm) thickness available for orders of > 7,000 SF (650 m2)



### Santorini Taupe

Size		Thickness		SAP code
59,6 x 59,6 cm	23" x 23"	8,5 mm	5/16"	100355124
59,6 x 120 cm	23" x 48"	8,5 mm	5/16"	100355041

Available finishes: Matt and Polished  
1/2 "(12 mm) thickness available for orders of > 7,000 SF (650 m2)



# Concrete



### Stark Grey Nature

Size		Thickness		SAP code
120 x 120 cm	47" x 47"	6 mm	1/4"	100339804
120 x 270 cm	47" x 106"	6 mm	1/4"	100339804



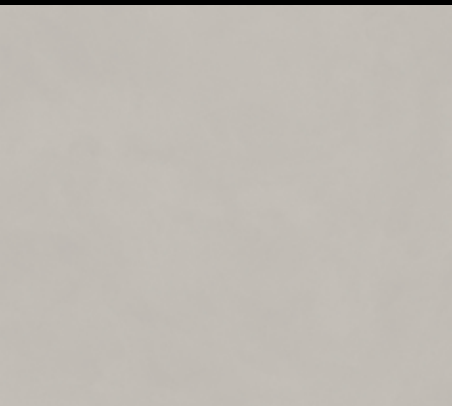
### Stark White Nature

Size		Thickness		SAP code
120 x 120 cm	47" x 47"	6 mm	1/4"	100331171
120 x 270 cm	47" x 106"	6 mm	1/4"	100332265



### Tadelakt Grey

Size		Thickness		SAP code
160 x 320 cm	63" x 126"	6-12 mm	1/4"-1/2"	100364738



### Tadelakt Sand

Size		Thickness		SAP code
160 x 320 cm	63" x 126"	6-12 mm	1/4"-1/2"	100355772



### Tadelakt Smoke

Size		Thickness		SAP code
160 x 320 cm	63" x 126"	6-12 mm	1/4"-1/2"	100355782



### Terra Bone

Size		Thickness		SAP code
59,6 x 59,6 cm	24" x 24"	8,5 mm	5/16"	100355096
59,6 x 120 cm	24" x 48"	8,5 mm	5/16"	100348029

Available finishes: Matt and Polished  
1/2 "(12 mm) thickness available for orders of > 7,000 SF (650 m2)



### Terra Clay

Size		Thickness		SAP code
59,6 x 120 cm	24" x 48"	8,5 mm	5/16"	100355102
120 x 120 cm	48" x 48"	8,5 mm	5/16"	100355029

1/2 "(12 mm) thickness available for orders of > 7,000 SF (650 m2)



### Terra Topo

Size		Thickness		SAP code
59,6 x 120 cm	24" x 48"	8,5 mm	5/16"	100355099
120 x 120 cm	48" x 48"	8,5 mm	5/16"	100348032

Available finishes: Matt and Polished  
1/2 "(12 mm) thickness available for orders of > 7,000 SF (650 m2)

# Concrete



### Urban Acero Nature

Size		Thickness		SAP code
59,6 x 59,6 cm	24" x 24"	8,5 mm	5/16"	100325584

Available finishes: Matt and Polished  
1/2 "(12 mm) thickness available for orders of > 7,000 SF (650 m2)



### Urban Black Nature

Size		Thickness		SAP code
59,6 x 59,6 cm	24" x 24"	8,5 mm	5/16"	100328095

Available finishes: Matt and Polished  
1/2 "(12 mm) thickness available for orders of > 7,000 SF (650 m2)



### Urban Caliza Nature

Size		Thickness		SAP code
100 x 100 cm	40" x 40"	8,5 mm	5/16"	100303468

Available finishes: Matt



### Urban Natural Nature

Size		Thickness		SAP code
100 x 100 cm	40" x 40"	8,5 mm	5/16"	100304410

Available finishes: Matt



### Vela Grey

Size		Thickness		SAP code
59,6 x 59,6 cm	24" x 24"	8,5 mm	5/16"	100325457
100 x 100 cm	40" x 40"	8,5 mm	5/16"	100360634

Available finishes: Matt



### Vela Natural

Size		Thickness		SAP code
100 x 100 cm	40" x 40"	8,5 mm	5/16"	100303508
59,6 x 59,6 cm	24" x 24"	8,5 mm	5/16"	100325470

Available finishes: Matt



### Vela Smoked

Size		Thickness		SAP code
100 x 100 cm	40" x 40"	12 mm	5/16"	100313083
59,6 x 59,6 cm	24" x 24"	8,5 mm	5/16"	100324729

Available finishes: Matt



# Marble

- Alpinus White
- Aria White
- Ars Beige
- Astana Grey
- Artic
- Breccia Imperiale
- Calacatta Antico
- Calacatta Gold
- Calatorao Nature
- Carrara Blanco
- Elegant Bone
- Elegant Grey
- Glem White
- Liem Black Nature
- Liem Dark Nature
- Liem Grey Nature
- Rivoli
- Roma Marfil
- Roma Noce
- Vendome Nature

STONKER

PARKER

XLIGHT

XTONE

> 6mm / 1/4" Porcelain Panels

> 6mm / 1/4" Porcelain Panels wood finish

6mm / 1/4" Large Format panels

6mm / 1/4" & 12mm / 1/2" Large Format panels

# Marble



### Alpinus White

Size		Thickness		SAP code
160 x 320 cm	63" x 126"	6 mm	1/4"	100340327
160 x 320 cm	63" x 126"	6 mm	1/4"	100340336
160 x 320 cm	63" x 126"	12 mm	1/2"	100343345
160 x 320 cm	63" x 126"	12 mm	1/2"	100343349

Available finishes: Matt and Textured



### Aria White

Size		Thickness		SAP code
120 x 270 cm	47" x 106"	6 mm	1/4"	100332593
160 x 320 cm	63" x 126"	6 mm	1/4"	100334323
120 x 270 cm	47" x 106"	6 mm	1/4"	100340336
120 x 270 cm	47" x 106"	6 mm	1/4"	100332599
160 x 320 cm	63" x 126"	6 mm	1/4"	100334135
160 x 320 cm	63" x 126"	12 mm	1/2"	100343377

Available finishes: Matt and Polished



### Ars Beige

Size		Thickness		SAP code
120 x 270 cm	47" x 106"	6 mm	1/4"	100339790
160 x 320 cm	63" x 126"	6 mm	1/4"	100334143
120 x 270 cm	47" x 106"	6 mm	1/4"	100339797
160 x 320 cm	63" x 126"	12 mm	1/2"	100343378

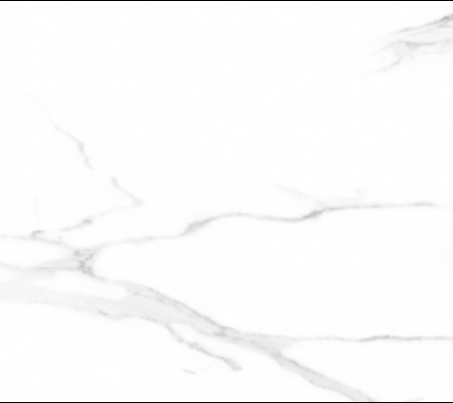
Available finishes: Matt and Polished



### Astana Grey

Size		Thickness		SAP code
120 x 270 cm	47" x 106"	6 mm	1/4"	100332578
160 x 320 cm	63" x 126"	6 mm	1/4"	100340602
120 x 270 cm	47" x 106"	6 mm	1/4"	100332616
160 x 320 cm	63" x 126"	12 mm	1/2"	100343384
160 x 320 cm	63" x 126"	12 mm	1/2"	100343379
160 x 320 cm	63" x 126"	6 mm	1/4"	100335565

Available finishes: Matt and Polished



### Artic

Size		Thickness		SAP code
59,6 x 59,6 cm	24" x 24"	8,5 mm	5/16"	100324845

Available finishes: Matt and Polished

1/2 "(12 mm) thickness available for orders of > 7,000 SF (650 m2)



### Breccia Imperiale

Size		Thickness		SAP code
160 x 320 cm	63" x 126"	6-12 mm	1/4"-1/2"	100344343



### Calacatta Antico

Size		Thickness		SAP code
160 x 320 cm	63" x 126"	6 mm	1/4"	100347283
160 x 320 cm	63" x 126"	6 mm	1/4"	100347279
160 x 320 cm	63" x 126"	12 mm	1/2"	100347305
160 x 320 cm	63" x 126"	12 mm	1/2"	100347297

Available finishes: Matt and Polished



### Calacatta Gold

Size		Thickness		SAP code
120 x 270 cm	47" x 106"	6 mm	1/4"	100332579
160 x 320 cm	63" x 126"	6 mm	1/4"	100334486
120 x 270 cm	47" x 106"	6 mm	1/4"	100332619
160 x 320 cm	63" x 126"	12 mm	1/2"	100343426
160 x 320 cm	63" x 126"	12 mm	1/2"	100343430

Available finishes: Matt and Polished



# Marble



### Calatorao Nature

Size		Thickness		SAP code
160 x 320 cm	63" x 126"	6 mm	1/4"	100342804
160 x 320 cm	63" x 126"	12 mm	1/2"	100343422



### Carrara Blanco

Size		Thickness		SAP code
59,6 x 59,6 cm	24" x 24"	8,5 mm	5/16"	100325566

Available finishes: Polished  
1/2 “(12 mm) thickness available for orders of > 7,000 SF (650 m2)



### Elegant Bone

Size		Thickness		SAP code
59,6 x 59,6 cm	24" x 24"	8,5 mm	5/16"	100324928

Available finishes: Polished  
1/2 “(12 mm) thickness available for orders of > 7,000 SF (650 m2)



### Elegant Grey

Size		Thickness		SAP code
59,6 x 59,6 cm	24" x 24"	8,5 mm	5/16"	100324918

Available finishes: Polished  
1/2 “(12 mm) thickness available for orders of > 7,000 SF (650 m2)



### Glem White

Size		Thickness		SAP code
120 x 270 cm	47" x 106"	6 mm	1/4"	100332596
59,6 x 120 cm	24" x 48"	6 mm	1/4"	100338726
160 x 320 cm	63" x 126"	6 mm	1/4"	100334881
160 x 320 cm	63" x 126"	6 mm	1/4"	100334341
160 x 320 cm	63" x 126"	12 mm	1/2"	100343306
160 x 320 cm	63" x 126"	12 mm	1/2"	100343308
120 x 270 cm	47" x 106"	6 mm	1/4"	100332662

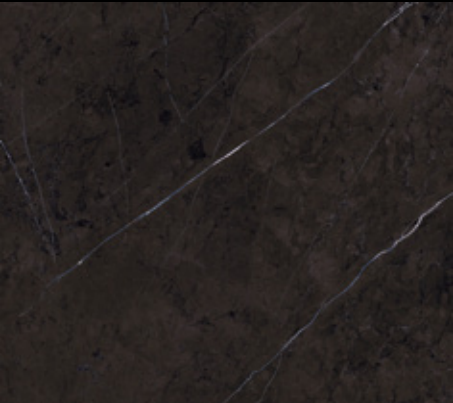
Available finishes: Matt and Polished



### Liem Black Nature

Size		Thickness		SAP code
160 x 320 cm	63" x 126"	6 mm	1/4"	100335738
160 x 320 cm	63" x 126"	6 mm	1/4"	100339951
160 x 320 cm	63" x 126"	12 mm	1/2"	100343313
160 x 320 cm	63" x 126"	12 mm	1/2"	100343316

Available finishes: Polished



### Liem Dark Nature

Size		Thickness		SAP code
160 x 320 cm	63" x 126"	6 mm	1/4"	100333912
160 x 320 cm	63" x 126"	6 mm	1/4"	100333912
160 x 320 cm	63" x 126"	6 mm	1/4"	100339977
160 x 320 cm	63" x 126"	12 mm	1/2"	100343318
160 x 320 cm	63" x 126"	12 mm	1/2"	100343320
160 x 320 cm	63" x 126"	6 mm	1/4"	100332632

Available finishes: Polished



### Liem Grey Nature

Size		Thickness		SAP code
120 x 270 cm	47" x 106"	6 mm	1/4"	100332609
59,6 x 120 cm	24" x 48"	6 mm	1/4"	100338765
160 x 320 cm	63" x 126"	6 mm	1/4"	100332632

# Marble



**Rivoli**

Size		Thickness		SAP code
59,6 x 59,6 cm	24" x 24"	8,5 mm	5/16"	100325236

Available finishes: Matt and Polished  
1/2 "(12 mm) thickness available for orders of > 7,000 SF (650 m2)



**Roma Marfil**

Size		Thickness		SAP code
59,6 x 120 cm	24" x 48"	11,5 mm	7/16"	100320226

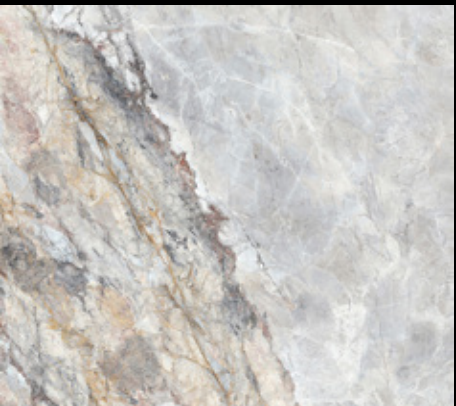
Available finishes: Matt



**Roma Noce**

Size		Thickness		SAP code
59,6 x 120 cm	24" x 48"	11,5 mm	7/16"	100320257

Available finishes: Matt



**Vendome Nature**

Size		Thickness		SAP code
120 x 270 cm	47" x 106"	6 mm	1/4"	100348288
120 x 120 cm	47" x 47"	6 mm	1/4"	100348304



# Metal

- Ferroker
- Steel Acero
- Steel Bone
- Steel Corten
- Oxide Brown Nature

STONKER

PARKER

XLIGHT

XTONE

> 6mm / 1/4" Porcelain Panels

> 6mm / 1/4" Porcelain Panels wood finish

6mm / 1/4" Large Format panels

6mm / 1/4" & 12mm / 1/2" Large Format panels

# Metal



**Ferroker**

Size		Thickness		SAP code
40 cm x 80 cm	16" x 32"	10,3 mm	7/16"	100291820
59,6 x 120 cm	23" x 47"	11,5 mm	7/16"	100162426



**Oxide Brown Nature**

Size		Thickness		SAP code
120 x 270 cm	47" x 106"	6 mm	1/4"	100332614



**Steel Acero**

Size		Thickness		SAP code
59,6 x 120 cm	23" x 47"	11,5 mm	7/16"	100320229



**Steel Bone**

Size		Thickness		SAP code
59,6 x 120 cm	23" x 47"	11,5 mm	7/16"	100320219



**Steel Corten**

Size		Thickness		SAP code
59,6 x 120 cm	23" x 47"	11,5 mm	7/16"	100320230



# Stone

**STONKER  
PARKER  
XLIGHT  
XTONE**  
> 6mm / 1/4" Porcelain Panels  
> 6mm / 1/4" Porcelain Panels wood finish  
6mm / 1/4" Large Format panels  
6mm / 1/4" & 12mm / 1/2" Large Format panels

Adda Bone  
Adda Sand  
Aged Clay Nature  
Avenue Black Nature  
Avenue Grey Nature  
Avenue White Nature  
Berna Acero  
Berna Caliza  
Berna Topo  
Boston Bone  
Boston Stone  
Boston Topo  
Coral Acero  
Coral Caliza  
Dorcia Acero  
Dorcia Bone  
Fiori Di Bosco Nature  
Karachi Acero  
Karachi Grey  
Lucerna Acero  
Lucerna Silver  
Matika Acero  
Matika Bone  
Matika Topo  
Montreal White Nature  
Mystic Beige

Mystic Grey  
Pietra Sicilia  
River Silver  
Savannah Caliza  
Savannah Topo  
Tourmalet Acero  
Tourmalet Black  
Tourmalet Caliza  
Tourmalet Granito  
Tourmalet White  
Tura

# Stone



**Adda Bone**

Size		Thickness		SAP code
120 x 120 cm	48" x 48"	8,5 mm	5/16"	100309458

Available finishes: Matt  
1/2 "(12 mm) thickness available for orders of > 7,000 SF (650 m2)



**Adda Sand**

Size		Thickness		SAP code
120 x 120 cm	48" x 48"	8,5 mm	5/16"	100309459

Available finishes: Matt  
1/2 "(12 mm) thickness available for orders of > 7,000 SF (650 m2)



**Aged Clay Nature**

Size		Thickness		SAP code
120 x 270 cm	47" x 106"	6 mm	1/4"	100332128
59,6 x 120 cm	24" x 48"	6 mm	1/4"	100338750
160 x 320 cm	63" x 126"	12 mm	1/2"	100343314



**Avenue Black Nature**

Size		Thickness		SAP code
59,6 x 59,6 cm	24" x 24"	9,5 mm	5/16"	100350371

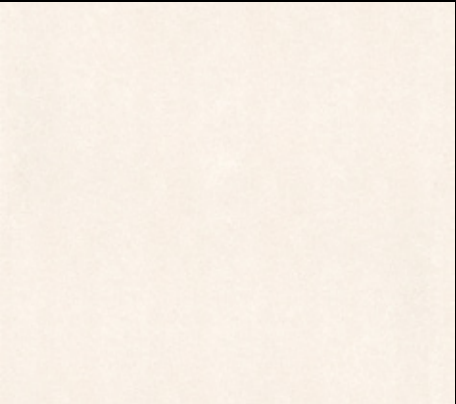
Available finishes: Matt  
1/2 "(12 mm) thickness available for orders of > 7,000 SF (650 m2)



**Avenue Grey Nature**

Size		Thickness		SAP code
59,6 x 59,6 cm	24" x 24"	9,5 mm	5/16"	100350374

Available finishes: Matt  
1/2 "(12 mm) thickness available for orders of > 7,000 SF (650 m2)



**Avenue White Nature**

Size		Thickness		SAP code
59,6 x 59,6 cm	24" x 24"	9,5 mm	5/16"	100350377

Available finishes: Matt  
1/2 "(12 mm) thickness available for orders of > 7,000 SF (650 m2)



**Berna Acero**

Size		Thickness		SAP code
120 x 120 cm	48" x 48"	8,5 mm	5/16"	100306313

Available finishes: Matt (Only 120x120cm)  
1/2 "(12 mm) thickness available for orders of > 7,000 SF (650 m2)



**Berna Caliza**

Size		Thickness		SAP code
120 x 120 cm	48" x 48"	8,5 mm	5/16"	100306302

Available finishes: Matt (Only 120x120cm)  
1/2 "(12 mm) thickness available for orders of > 7,000 SF (650 m2)



# Stone



**Berna Topo**

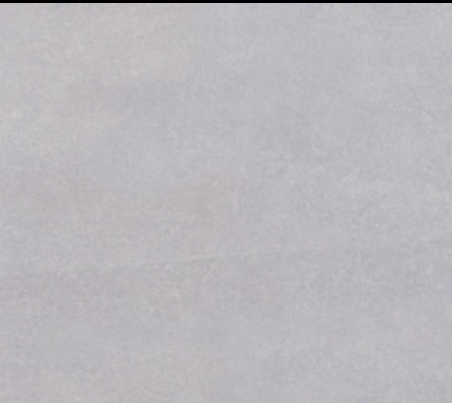
Size		Thickness		SAP code
120 x 120 cm	48" x 48"	8,5 mm	5/16"	100309221

Available finishes: Matt  
1/2 "(12 mm) thickness available for orders of > 7,000 SF (650 m2)



**Boston Bone**

Size		Thickness		SAP code
59,6 x 180 cm	23" x 71"	11,5 mm	7/16"	100179347



**Boston Stone**

Size		Thickness		SAP code
59,6 x 180 cm	23" x 71"	11,5 mm	7/16"	100179318



**Boston Topo**

Size		Thickness		SAP code
59,6 x 180 cm	23" x 71"	11,5 mm	7/16"	100179326



**Coral Acero**

Size		Thickness		SAP code
120 x 120 cm	48" x 48"	8,5 mm	5/16"	100330193

Available finishes: Matt and Polished  
1/2 "(12 mm) thickness available for orders of > 7,000 SF (650 m2)



**Coral Bone**

Size		Thickness		SAP code
120 x 120 cm	48" x 48"	8,5 mm	5/16"	100348020

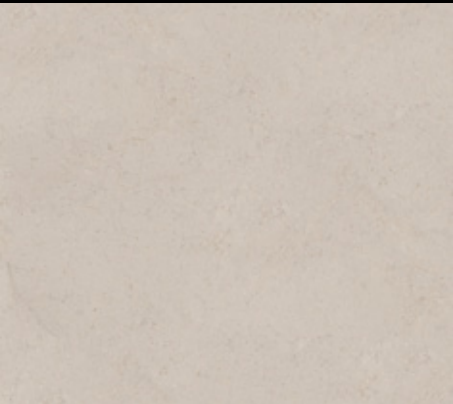
Available finishes: Matt and Polished  
1/2 "(12 mm) thickness available for orders of > 7,000 SF (650 m2)



**Coral Caliza**

Size		Thickness		SAP code
120 x 120 cm	48" x 48"	8,5 mm	5/16"	100330176

Available finishes: Matt and Polished  
1/2 "(12 mm) thickness available for orders of > 7,000 SF (650 m2)



**Dorcia Acero**

Size		Thickness		SAP code
120 x 120 cm	48" x 48"	8,5 mm	5/16"	100348026

Available finishes: Matt and Polished  
1/2 "(12 mm) thickness available for orders of > 7,000 SF (650 m2)

# Stone



### Dorcia Bone

Size		Thickness		SAP code
120 x 120 cm	48" x 48"	8,5 mm	5/16"	100348020

Available finishes: Matt and Polished

1/2 "(12 mm) thickness available for orders of > 7,000 SF (650 m2)



### Fiori Di Bosco Nature

Size		Thickness		SAP code
120 x 270 cm	47" x 106"	6 mm	1/4"	100332605
59,6 x 120 cm	24" x 48"	6 mm	1/4"	100338815
160 x 320 cm	63" x 126"	6 mm	1/4"	100337735
120 x 270 cm	47" x 106"	6 mm	1/4"	100332624
160 x 320 cm	63" x 126"	12 mm	1/2"	100343371

Available finishes: Matt and Polished



### Karachi Acero

Size		Thickness		SAP code
120 x 120 cm	48" x 48"	8,5 mm	5/16"	100312973

Available finishes: Matt

1/2 "(12 mm) thickness available for orders of > 7,000 SF (650 m2)



### Karachi Grey

Size		Thickness		SAP code
120 x 120 cm	48" x 48"	8,5 mm	5/16"	100309223

Available finishes: Matt

1/2 "(12 mm) thickness available for orders of > 7,000 SF (650 m2)



### Lucerna Acero

Size		Thickness		SAP code
59,6 x 59,6 cm	24" x 24"	8,5 mm	5/16"	100320266
120 x 120 cm	48" x 48"	8,5 mm	5/16"	100320160

Available finishes: Matt and Polished

1/2 "(12 mm) thickness available for orders of > 7,000 SF (650 m2)



### Lucerna Silver

Size		Thickness		SAP code
59,6 x 59,6 cm	24" x 24"	8,5 mm	5/16"	100314070
120 x 120 cm	48" x 48"	8,5 mm	5/16"	100314132

Available finishes: Matt and Polished

1/2 "(12 mm) thickness available for orders of > 7,000 SF (650 m2)



### Matika Acero

Size		Thickness		SAP code
100 x 100 cm	40" x 40"	12 mm	1/2"	100299249



### Matika Bone

Size		Thickness		SAP code
100 x 100 cm	40" x 40"	12 mm	1/2"	100299279



# Stone



### Matika Topo

Size		Thickness		SAP code
100 x 100 cm	40" x 40"	12 mm	1/2"	100299292



### Montreal White Nature

Size		Thickness		SAP code
120 x 270 cm	47" x 106"	6 mm	1/4"	100332611
59,6 x 120 cm	24" x 48"	6 mm	1/4"	100338766
160 x 320 cm	63" x 126"	6 mm	1/4"	100342153
160 x 320 cm	63" x 126"	12 mm	1/2"	100343340



### Mystic Beige

Size		Thickness		SAP code
120 x 120 cm	48" x 48"	8,5 mm	5/16"	100336887

Available finishes: Matt and Polished

1/2 "(12 mm) thickness available for orders of > 7,000 SF (650 m2)



### Mystic Grey

Size		Thickness		SAP code
120 x 120 cm	48" x 48"	8,5 mm	5/16"	100336888

Available finishes: Matt and Polished

1/2 "(12 mm) thickness available for orders of > 7,000 SF (650 m2)



### Pietra Sicilia

Size		Thickness		SAP code
160 x 320 cm	63" x 126"	6-12 mm	1/4"-1/2"	100340857



### River Silver

Size		Thickness		SAP code
59,6 x 120 cm	24" x 48"	11,5 mm	7/16"	100222385



### Savannah Caliza

Size		Thickness		SAP code
59,6 x 120 cm	24" x 48"	11,5 mm	7/16"	100337274
120 x 270 cm	47" x 106"	6 mm	1/4"	100355438



### Savannah Topo

Size		Thickness		SAP code
59,6 x 120 cm	24" x 48"	11,5mm	7/16"	100337256
120 x 270 cm	47" x 106"	6 mm	1/4"	100355442

# Stone



### Tourmalet Acero

Size		Thickness		SAP code
59,6 x 59,6 cm	24" x 24"	8,5 mm	5/16"	100364102
59,6 x 120 cm	24" x 48"	8,5 mm	5/16"	100364057
120 x 120 cm	48" x 48"	8,5 mm	5/16"	100364021

Available finishes: Matt  
1/2 "(12 mm) thickness available for orders of > 7,000 SF (650 m2)



### Tourmalet Black

Size		Thickness		SAP code
59,6 x 59,6 cm	24" x 24"	8,5 mm	5/16"	100364114
59,6 x 120 cm	24" x 48"	8,5 mm	5/16"	100364063
120 x 120 cm	48" x 48"	8,5 mm	5/16"	100364027

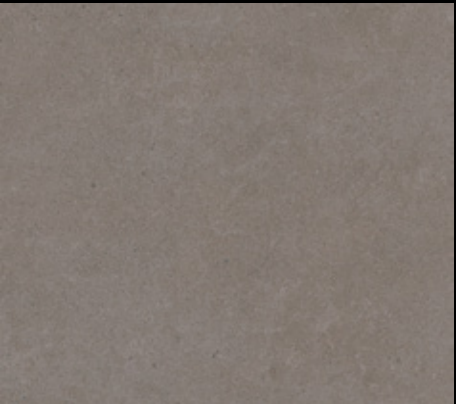
Available finishes: Matt  
1/2 "(12 mm) thickness available for orders of > 7,000 SF (650 m2)



### Tourmalet Caliza

Size		Thickness		SAP code
59,6 x 59,6 cm	24" x 24"	8,5 mm	5/16"	100364096
59,6 x 120 cm	24" x 48"	8,5 mm	5/16"	100364096
120 x 120 cm	48" x 48"	8,5 mm	5/16"	100363998

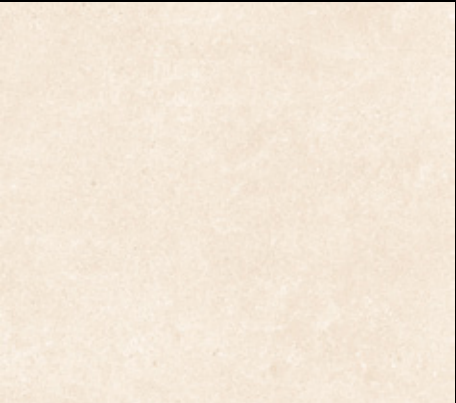
Available finishes: Matt  
1/2 "(12 mm) thickness available for orders of > 7,000 SF (650 m2)



### Tourmalet Granito

Size		Thickness		SAP code
59,6 x 59,6 cm	24" x 24"	8,5 mm	5/16"	100364108
59,6 x 120 cm	24" x 48"	8,5 mm	5/16"	100364060
120 x 120 cm	48" x 48"	8,5 mm	5/16"	100364024

Available finishes: Matt  
1/2 "(12 mm) thickness available for orders of > 7,000 SF (650 m2)



### Tourmalet White

Size		Thickness		SAP code
59,6 x 59,6 cm	24" x 24"	8,5 mm	5/16"	100364090
59,6 x 120 cm	24" x 48"	8,5 mm	5/16"	100364051
120 x 120 cm	48" x 48"	8,5 mm	5/16"	100363995

Available finishes: Matt  
1/2 "(12 mm) thickness available for orders of > 7,000 SF (650 m2)



### Tura

Size		Thickness		SAP code
160 x 320 cm	63" x 126"	6-12 mm	1/4"-1/2"	100342776

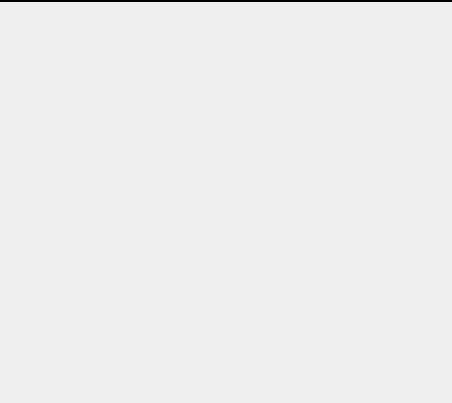


# Technic

Extreme White  
Moon White Nature  
Nova Esp  
Technic Nieve

**STONKER**  
**PARKER**  
**XLIGHT**  
**XTONE**

> 6mm / 1/4" Porcelain Panels  
> 6mm / 1/4" Porcelain Panels wood finish  
6mm / 1/4" Large Format panels  
6mm / 1/4" & 12mm / 1/2" Large Format panels



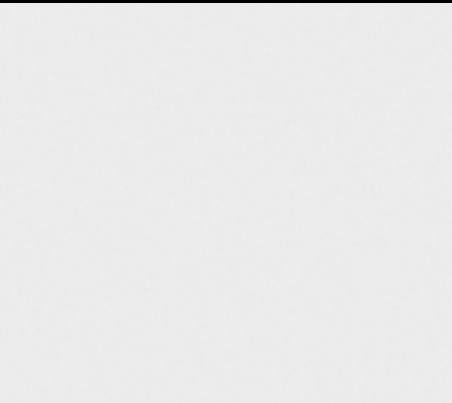
**Extreme White**

Size		Thickness		SAP code
59,6 x 120 cm	24" x 48"	11,5 mm	7/16"	100158512



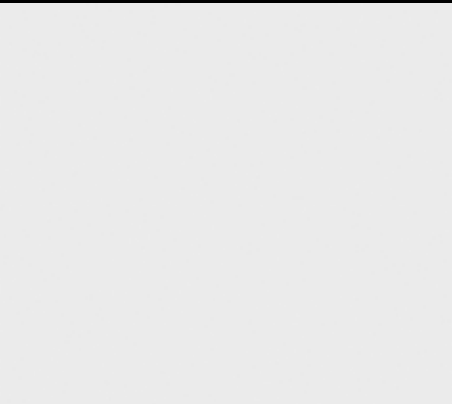
**Moon White Nature**

Size		Thickness		SAP code
120 x 270 cm	47" x 106"	6 mm	1/4"	100332752
160 x 320 cm	63" x 126"	6 mm	1/4"	100335304
160 x 320 cm	63" x 126"	12 mm	1/2"	100343343



**Nova Esp**

Size		Thickness		SAP code
59,6 x 120 cm	24" x 48"	11,5 mm	7/16"	100315867



**Technic Nieve**

Size		Thickness		SAP code
59,6 x 180 cm	24" x 48"	11,5 mm	7/16"	100153392



# Terracota / Terrazzo

Cotto Cáñamo  
Treviso Antracita  
Treviso Blanco

**STONKER**  
**PARKER**  
**XLIGHT**  
**XTONE**

> 6mm / 1/4" Porcelain Panels  
> 6mm / 1/4" Porcelain Panels wood finish  
6mm / 1/4" Large Format panels  
6mm / 1/4" & 12mm / 1/2" Large Format panels

# Terracota / Terrazzo



### Cotto Cáñamo

Size		Thickness		SAP code
59,6 x 59,6 cm	24" x 24"	8,5 mm	5/16"	100326021
120 x 120 cm	48" x 48"	8,5 mm	5/16"	100310660

Available finishes: Matt and Polished  
1/2 "(12 mm) thickness available for orders of > 7,000 SF (650 m2)



### Treviso Antracita

Size		Thickness		SAP code
120 x 120 cm	48" x 48"	8,5 mm	5/16"	100310861

Available finishes: Matt and Polished  
1/2 "(12 mm) thickness available for orders of > 7,000 SF (650 m2)



### Treviso Blanco

Size		Thickness		SAP code
120 x 120 cm	48" x 48"	8,5 mm	5/16"	100310881

Available finishes: Matt and Polished  
1/2 "(12 mm) thickness available for orders of > 7,000 SF (650 m2)



# Wood

- Bremen Ash

Bremen Natural

Bremen Nut

Bremen Roble

Bruselas Fresno

Bruselas Roble

Bruselas Walnut

Cadore Arce Nature

Ele Nature

Ewood Camel Nature

Manhattan Cognac

Manhattan Colonial

Manhattan Maple

Minnesota Ash

Minnesota Camel

Minnesota Cream

Minnesota Honey

Minnesota Moka

Neda Nature

Tanzania Almond

Tanzania Natural
- Tanzania Nut

Tanzania Silver

Tanzania Taupe

Tanzania White

Vancouver Brown

Vancouver Honey

Vancouver Moka

Vancouver Nude

Vancouver Sand

STONKER  
PARKER  
XLIGHT  
XTONE

> 6mm / 1/4" Porcelain Panels

> 6mm / 1/4" Porcelain Panels wood finish

6mm / 1/4" Large Format panels

6mm / 1/4" & 12mm / 1/2" Large Format panels

# Wood



**Bremen Ash**

Size		Thickness		SAP code
19,3 x 120 cm	8" x 47"	11,5 mm	7/16"	100299124



**Bremen Natural**

Size		Thickness		SAP code
19,3 x 120 cm	8" x 47"	11,5 mm	7/16"	100299155



**Bremen Nut**

Size		Thickness		SAP code
19,3 x 120 cm	8" x 47"	11,5 mm	7/16"	100299149



**Bremen Roble**

Size		Thickness		SAP code
19,3 x 120 cm	8" x 47"	11,5 mm	7/16"	100299159



**Bruselas Fresno**

Size		Thickness		SAP code
19,3 x 180 cm	8" x 71"	11,5 mm	7/16"	100347959
29,4 x 180 cm	12" x 71"	11,5 mm	7/16"	100347935



**Bruselas Roble**

Size		Thickness		SAP code
19,3 x 180 cm	8" x 71"	11,5 mm	7/16"	100347962
29,4 x 180 cm	12" x 71"	11,5 mm	7/16"	100347938



**Bruselas Walnut**

Size		Thickness		SAP code
19,3 x 180 cm	8" x 71"	11,5 mm	7/16"	100347969
29,4 x 180 cm	12" x 71"	11,5 mm	7/16"	100347944



**Cadore Arce Nature**

Size		Thickness		SAP code
120 x 270 cm	47" x 106"	6 mm	1/4"	100348292



# Wood



### Cadore Wengue Nature

Size		Thickness		SAP code
120 x 270 cm	47" x 106"	6 mm	1/4"	100355490



### Ele Nature

Size		Thickness		SAP code
160 x 320 cm	63" x 126"	6 mm	1/4"	100347242
160 x 320 cm	63" x 126"	12 mm	1/2"	100347254



### Ewood Camel Nature

Size		Thickness		SAP code
120 x 270 cm	47" x 106"	6 mm	1/4"	100332603
160 x 320 cm	63" x 126"	6 mm	1/4"	100333864
160 x 320 cm	63" x 126"	12 mm	1/2"	100343428



### Manhattan Cognac

Size		Thickness		SAP code
19,3 x 120 cm	8" x 47"	11,5 mm	7/16"	100190027
19,3 x 180 cm	8" x 71"	11,5 mm	7/16"	100190050
29,4 x 120 cm	12" x 47"	11,5 mm	7/16"	100190034
29,4 x 180 cm	12" x 71"	11,5 mm	7/16"	100190048



### Manhattan Colonial

Size		Thickness		SAP code
19,3 x 120 cm	8" x 47"	11,5 mm	7/16"	100190042
19,3 x 180 cm	8" x 71"	11,5 mm	7/16"	100190055
29,4 x 120 cm	12" x 47"	11,5 mm	7/16"	100190052
29,4 x 180 cm	12" x 71"	11,5 mm	7/16"	100190061



### Manhattan Maple

Size		Thickness		SAP code
19,3 x 120 cm	8" x 47"	11,5 mm	7/16"	100190043
19,3 x 180 cm	8" x 71"	11,5 mm	7/16"	100190038
29,4 x 120 cm	12" x 47"	11,5 mm	7/16"	100190060
29,4 x 180 cm	12" x 71"	11,5 mm	7/16"	100190039



### Minnesota Ash

Size		Thickness		SAP code
23 x 150 cm	9" x 59"	11 mm	7/16"	100339701



### Minnesota Camel

Size		Thickness		SAP code
23 x 150 cm	9" x 59"	11 mm	7/16"	100339706

# Wood



**Minnesota Cream**

Size		Thickness		SAP code
23 x 150 cm	9" x 59"	11 mm	7/16"	100339711



**Minnesota Honey**

Size		Thickness		SAP code
23 x 150 cm	9" x 59"	11 mm	7/16"	100339716



**Minnesota Moka**

Size		Thickness		SAP code
23 x 150 cm	9" x 59"	11 mm	7/16"	100339721



**Neda Nature**

Size		Thickness		SAP code
160 x 320 cm	63" x 126"	6 mm	1/4"	100347258
160 x 320 cm	63" x 126"	12 mm	1/2"	100347266



**Tanzania Almond**

Size		Thickness		SAP code
23 x 150 cm	9" x 59"	11 mm	7/16"	100339736



**Tanzania Natural**

Size		Thickness		SAP code
23 x 150 cm	9" x 59"	11 mm	7/16"	100339741



**Tanzania Nut**

Size		Thickness		SAP code
23 x 150 cm	9" x 59"	11 mm	7/16"	100339741



**Tanzania Silver**

Size		Thickness		SAP code
23 x 150 cm	9" x 59"	11 mm	7/16"	100339751



# Wood



**Tanzania Taupe**

Size		Thickness		SAP code
23 x 150 cm	9" x 59"	11 mm	7/16"	100339756



**Tanzania White**

Size		Thickness		SAP code
23 x 150 cm	9" x 59"	11 mm	7/16"	100339761



**Vancouver Brown**

Size		Thickness		SAP code
23 x 150 cm	9" x 59"	11 mm	7/16"	100339769



**Vancouver Honey**

Size		Thickness		SAP code
23 x 150 cm	9" x 59"	11 mm	7/16"	100339772



**Vancouver Moka**

Size		Thickness		SAP code
23 x 150 cm	9" x 59"	11 mm	7/16"	100339777



**Vancouver Nude**

Size		Thickness		SAP code
23 x 150 cm	9" x 59"	11 mm	7/16"	100339782



**Vancouver Sand**

Size		Thickness		SAP code
23 x 150 cm	9" x 59"	11 mm	7/16"	100339787

# Facade types

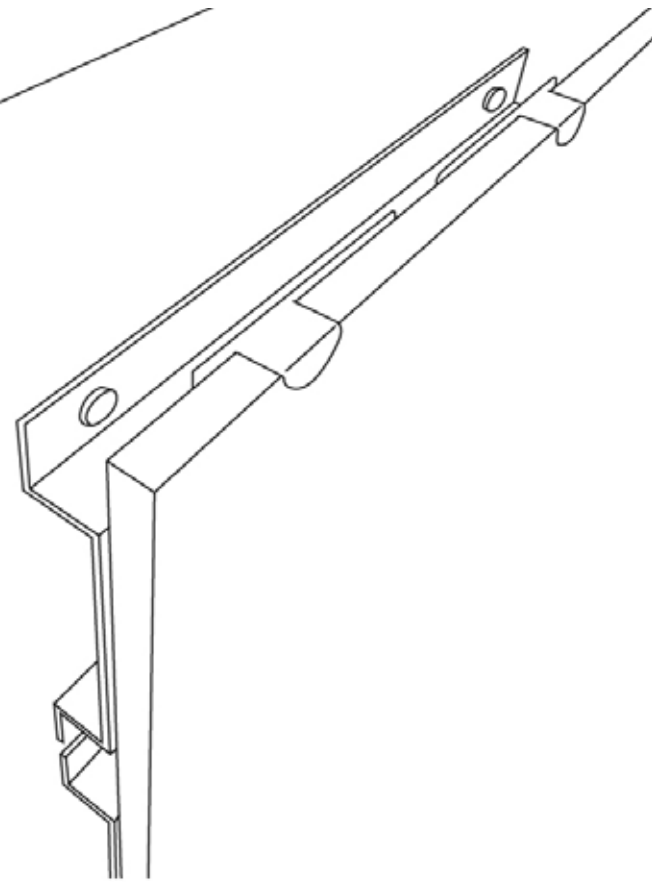
10

## VF Single siding Visible clips

Façade system with horizontal top-hat profiles that does not allow for levelling or adjustment between the substrate and the front of the façade. The porcelain panels fit into stainless-steel clips, leaving the holding tabs exposed. Depending on the porcelain panel model, the clips can be lacquered according to the RAL colour chosen by the client.

Recommended for rainscreens with a shallow cladding zone, where the visibility of the fixing clips is not an issue.

Minimum build up: 3/4" (20mm)

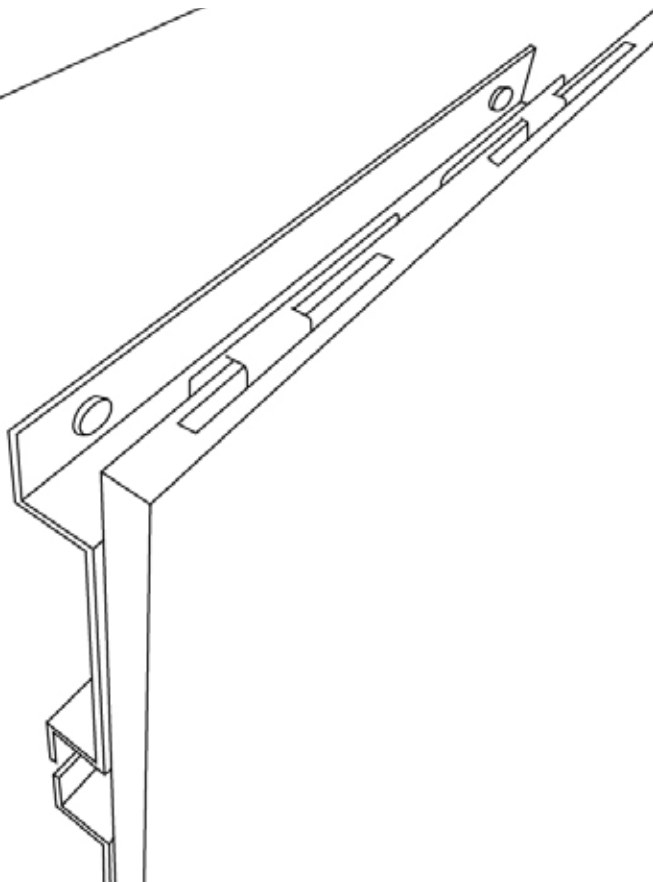


## VF Single siding Concealed clips

Façade system with horizontal top-hat profiles that does not allow for levelling or adjustment between the substrate and the front of the façade. The porcelain panels are supplied with kerf slots where the holding tabs of the clip fit in, leaving them concealed.

Recommended for rainscreens with a shallow cladding zone, where you prefer not to see the fixing clips.

Minimum build up: 3/4" (20mm)

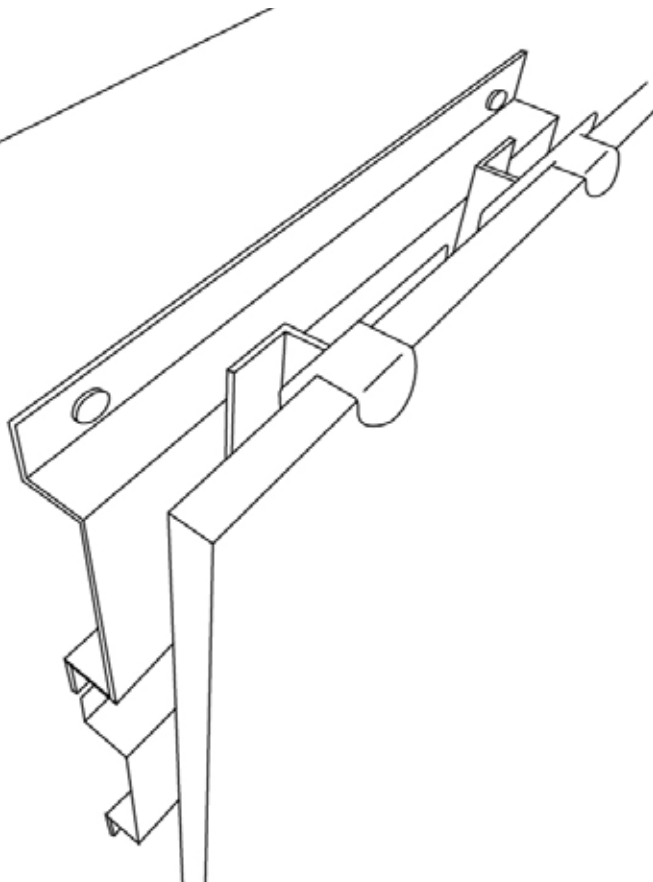


## VF Double siding Visible clips

Façade system with horizontal and vertical top-hat profiles that does not allow for levelling or adjustment between the substrate and the front of the façade. The porcelain panels fit into stainless-steel clips, leaving the holding tabs exposed. Depending on the porcelain panel model, the clips can be lacquered according to the RAL colour chosen by the client.

Recommended for rainscreens with a moderate cladding zone, where the visibility of the fixing clips is not an issue.

Minimum build up: 1 1/2" (40mm)

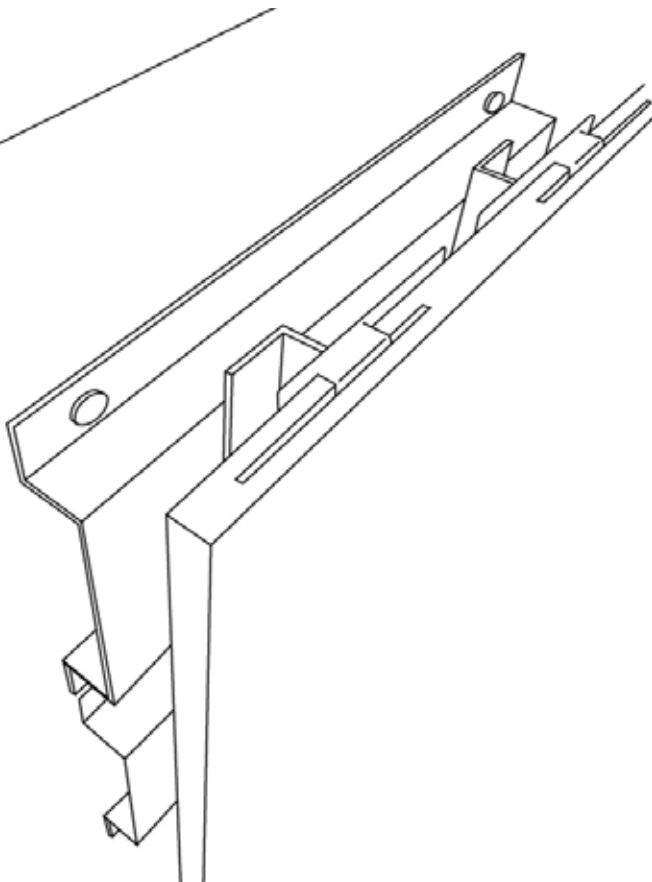


## VF Double siding Concealed clips

Façade system with horizontal and vertical top-hat profiles that does not allow for levelling or adjustment between the substrate and the front of the façade. The porcelain panels are supplied with kerf slots where the holding tabs of the clip fit in, leaving them concealed.

Recommended for rainscreens with a moderate cladding zone, where you prefer not to see the fixing clips.

Minimum build up: 1 1/2" (40mm)





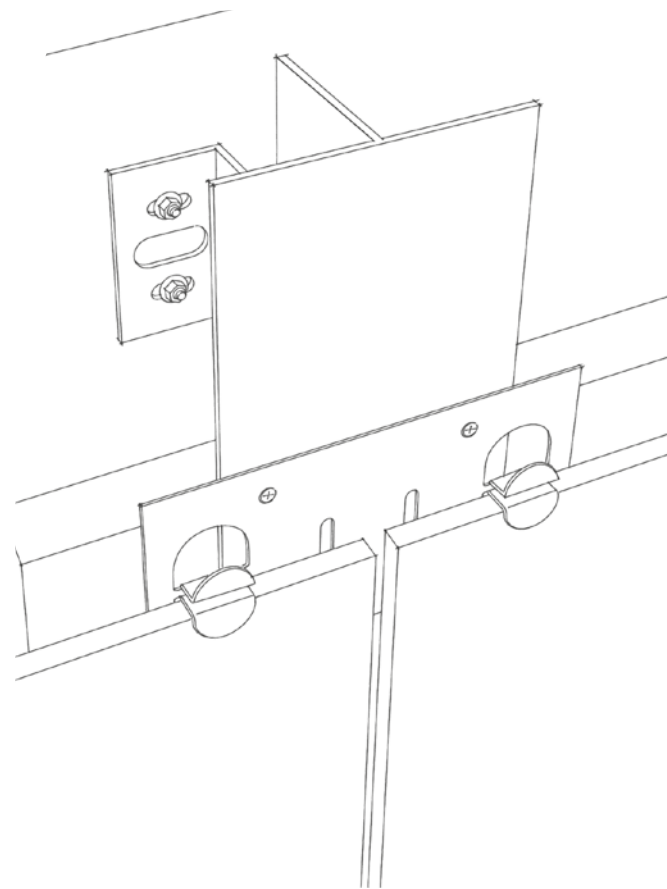
# Facade types

## VF Vertical Profiles Visible clips

Facade system with adjustable vertical profiles that allow for levelling and adjustment between the substrate and the front of the facade. The porcelain panels fit into stainless-steel clips, leaving the holding tabs exposed. Depending on the porcelain panel model, the clips can be lacquered in the RAL colour chosen by the client.

Recommended for rainscreens with a wide cladding zone, where you need to adjust the build up and the visibility of the fixing clips is not an issue.

Minimum build up:  $\geq 3"$  (80mm)

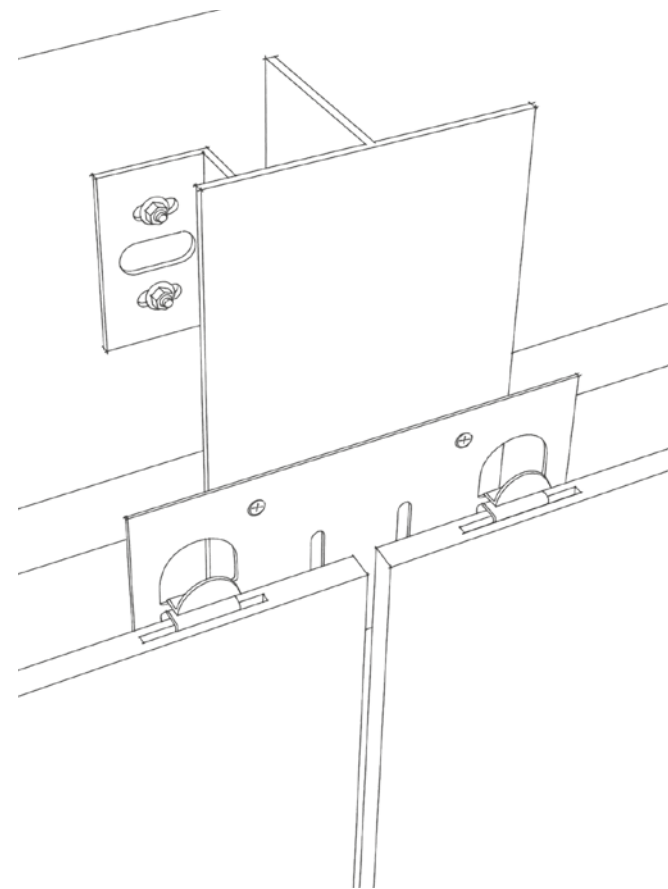


## VF Profiles - Concealed clips & kerfs

Facade system with adjustable vertical profiles that allow for levelling and adjustment between the substrate and the front of the facade. The porcelain panels are supplied with kerfs slots where the holding tabs of the clip fit in, leaving them concealed.

Recommended for rainscreens with a wide and adjustable cladding zone, where the fixing clips are preferably concealed.

Minimum build up:  $\geq 3"$  (80mm)

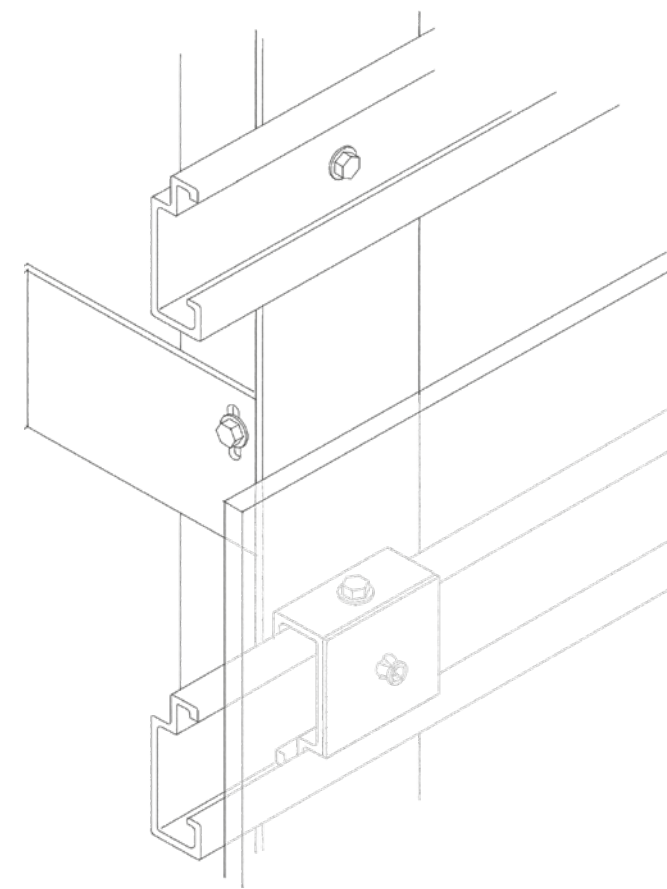


## VF C-BOLT - Concealed clips

The large format porcelain panels are supplied with anchors inserted on the back of the pieces through expandable screws that fit into a profiles system attached to the facade structure, remaining completely hidden from view.

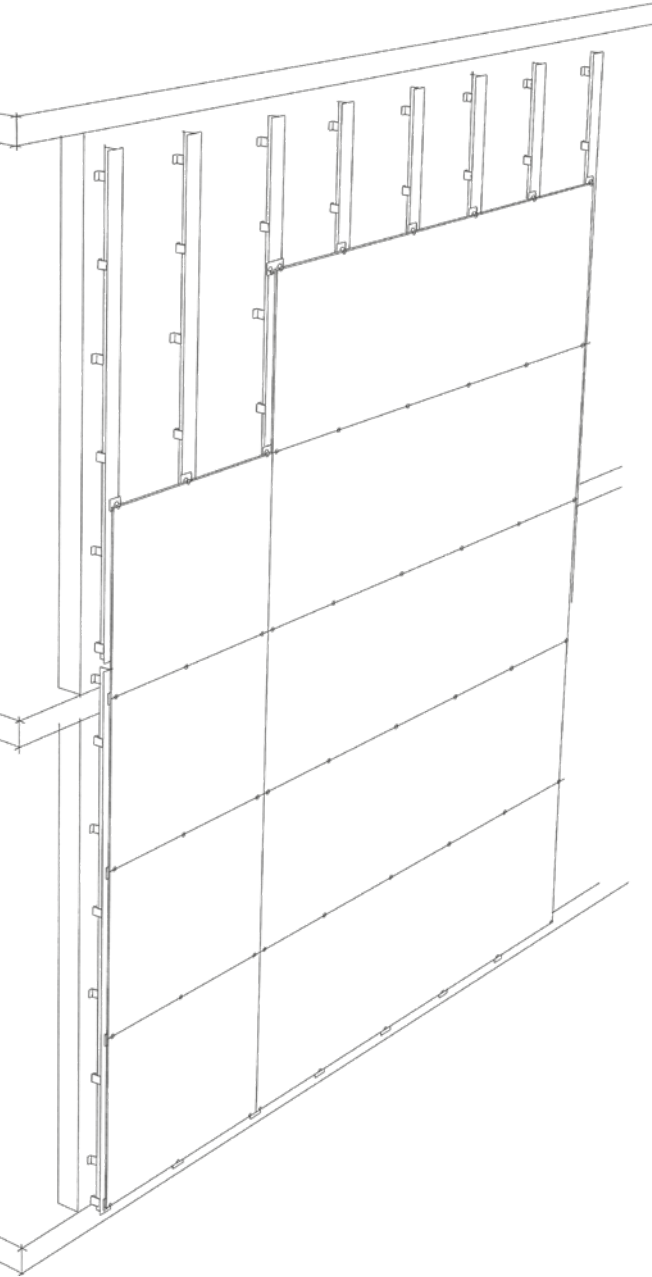
Recommended for large and heavy porcelain panels, where the width of the cladding zone is not an issue.

Minimum build up:  $\geq 4"$  (100.5mm)

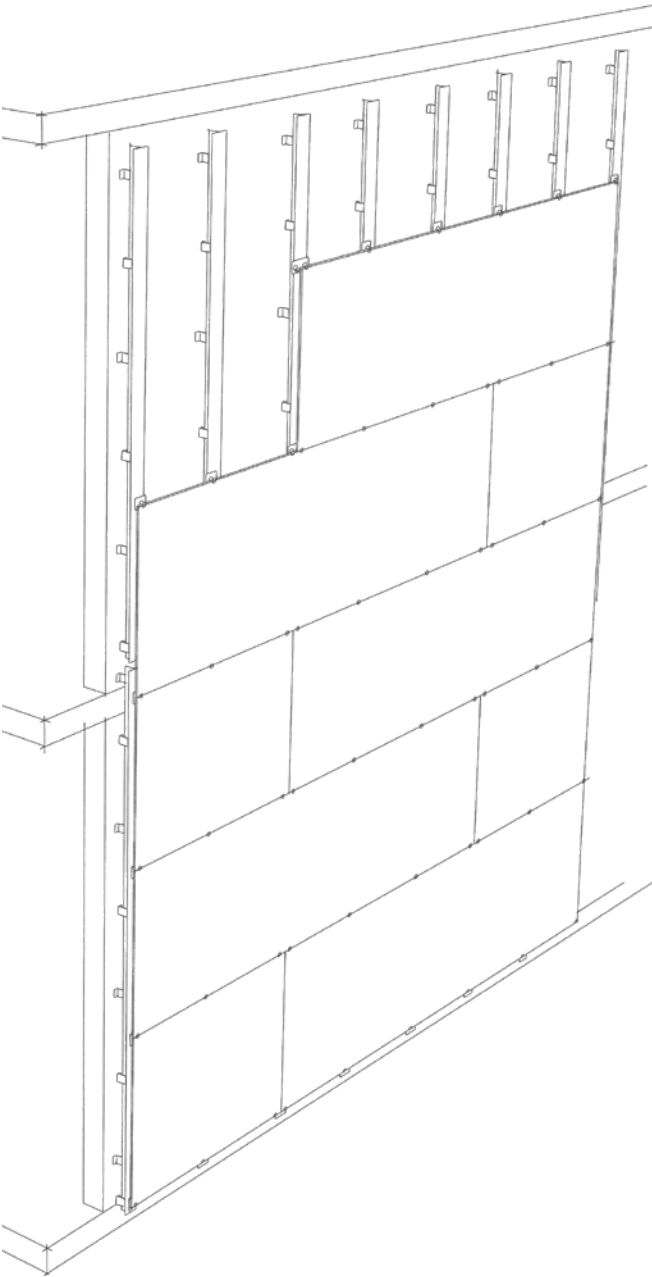


# Example layouts

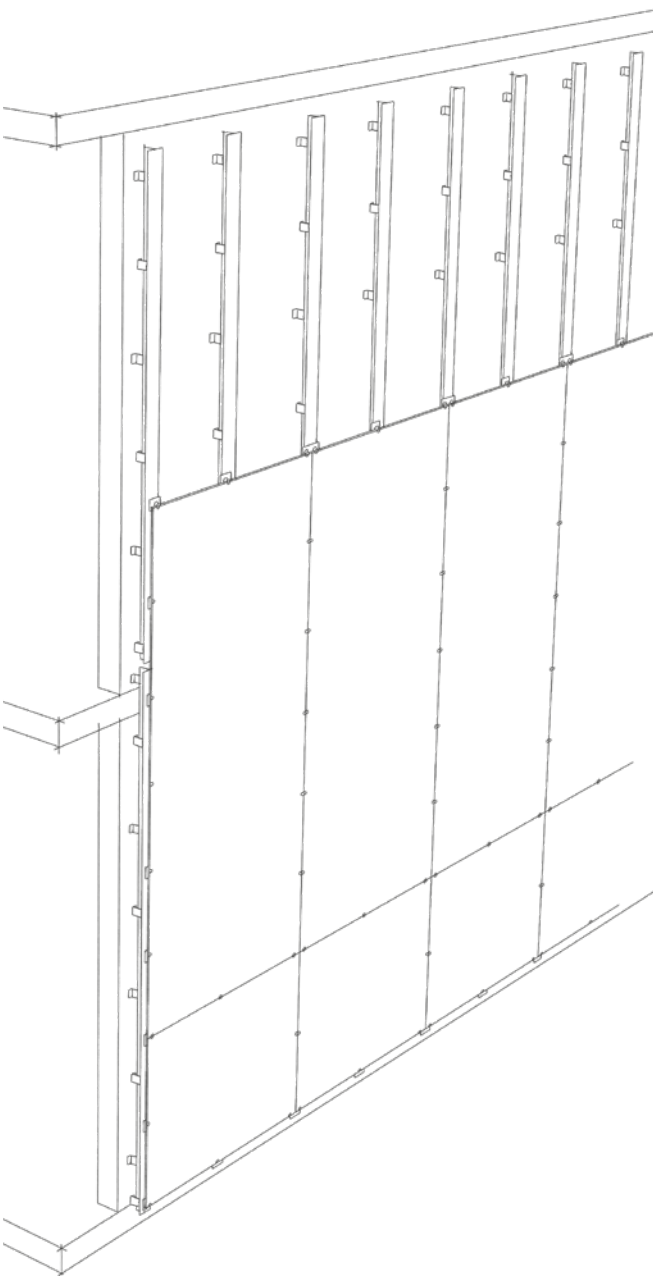
**Horizontal modulation with straight joints**



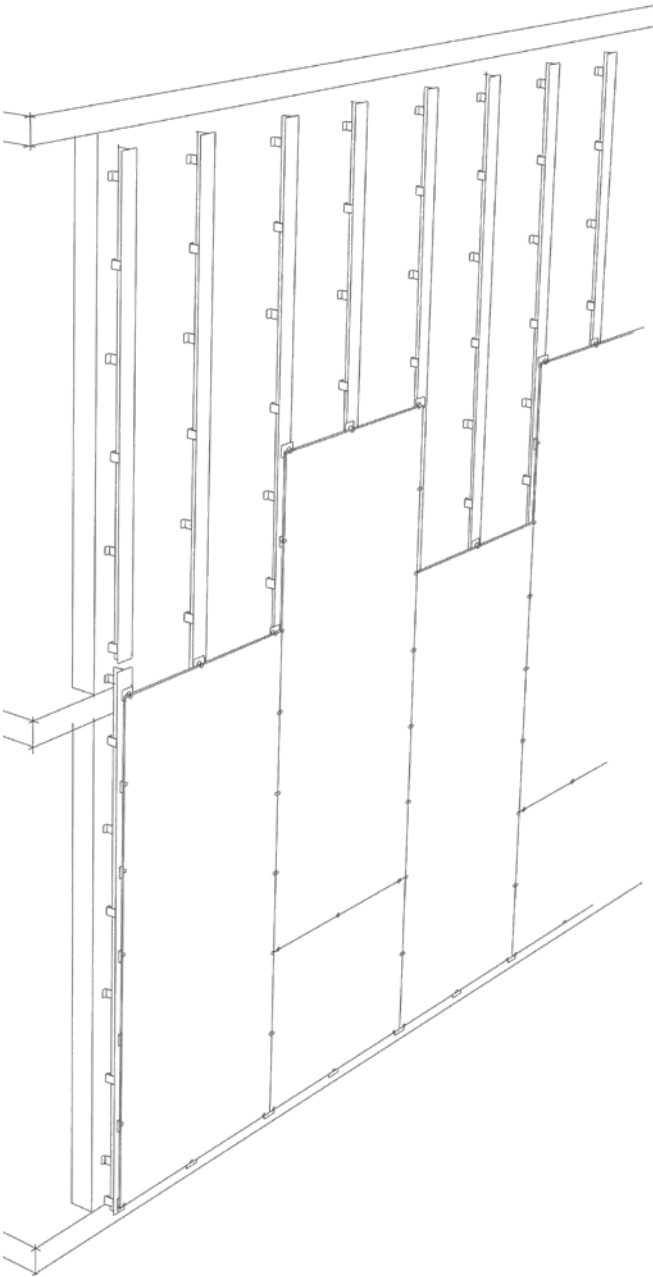
**Horizontal modulation with staggered joints**



**Vertical modulation with straight joints**



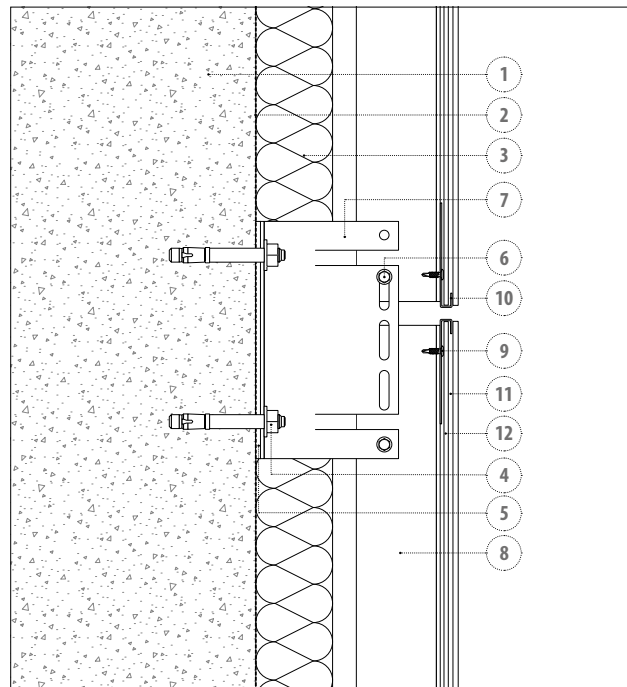
**Vertical modulation with staggered joints**





# Facade types

## Construction details Concealed clip

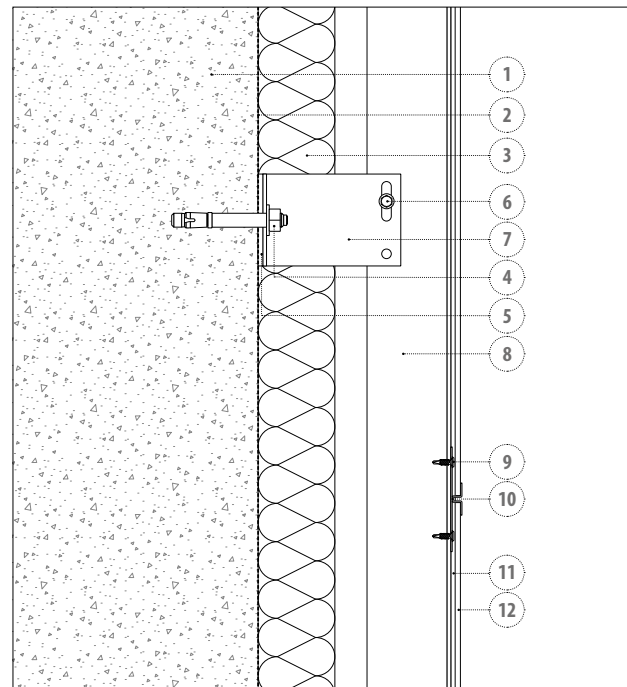


Vertical cross-section

Elements of the system:

1. Substrate
2. Waterproofing
3. Thermal insulation
4. Anchor
5. Thermal isolator
6. Screw
7. L Brackets
8. T Profiles
9. Self-drilling screw
10. Concealed clip
11. Adhesive
12. Porcelain panel

## Construction details Visible clip

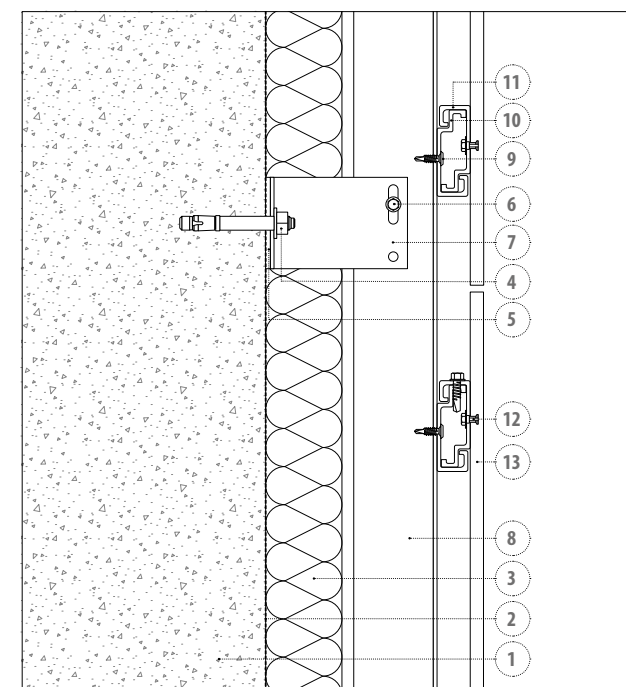


Vertical cross-section

Elements of the system:

1. Substrate
2. Waterproofing
3. Thermal insulation
4. Anchor
5. Thermal isolator
6. Screw
7. L Brackets
8. T Profiles
9. Self-drilling screw
10. Visible clip
11. Adhesive
12. Porcelain panel

## Construction details C-BOLT Concealed clip



Vertical cross-section

Elements of the system:

1. Substrate
2. Waterproofing
3. Thermal insulation
4. Anchor
5. Thermal isolator
6. Screw
7. L Brackets
8. Vertical aluminum tubular profile
9. Self-drilling screw
10. C-BOLT main fixing clip
11. C-BOLT secondary fixing clip
12. C-BOLT screw
13. Porcelain panel



## Questions?

Contact us at  
416-708-2994

Or email us at  
[anna@snrg.ca](mailto:anna@snrg.ca)

## Find us at

Website  
[www.porcelanosafacades.ca](http://www.porcelanosafacades.ca)

Showroom  
Fontile  
270 Terminal Ave.  
Vancouver, BC