

FONDOVALLE

**SHA
RDS**



MINERAL SHADES



SHARDS
PORCELAIN STONEWARE 120X120

CREATIVE PATTERNS FOR A UNIQUE DESIGN

Patterns creativi per un design singolare | Des modèles créatif pour un design singulier |
Kreative Muster für ein einzigartiges Design

Textures mutevole e preziose, con trame più o meno fini, costruiscono spazi di luce e colore coniugando tradizione e modernità, in un binomio ricco di personalità. Shards offre nuove soluzioni di stile per chi ama un interior design che non lascia indifferenti, in cui le superfici sono protagoniste in abbinamento ad arredi minimali, accessori dalle forme eclettiche e accenni di tinte sature.

Precious changing textures with more or less defined patterns to build spaces of light and colour that combine tradition and modernity with personality. Shards offers new style designs for those who love interior design solutions that impress, where the surfaces are the protagonists, combined with minimalist furniture, accessories with eclectic shapes and touches of saturated colours.

Des textures changeantes et précieuses, avec des trames plus ou moins fines, construisent des espaces de lumière et de couleur, en associant tradition et modernité, en un binôme de grand caractère. Shards offre de nouvelles solutions de style pour ceux qui aiment l'interior design qui ne laisse pas indifférent, les surfaces sont les protagonistes, associées à des décors minimaux, à des accessoires aux formes éclectiques et à des touches de teintes saturées.

Veränderliche und edle Texturen mit mehr oder weniger ausgeprägten Mustern bilden Räume aus Licht und Farbe, verbinden Tradition und Modernität, in einem an Persönlichkeit reichen Binom. Shards bietet neue stilistische Lösungen für diejenigen, die ein Interior Design lieben, das nicht unberührt lässt und in dem die Oberflächen die Protagonisten in Kombination mit minimaler Einrichtung sind, als Zubehör zu den eklektischen Formen und Andeutungen auf gesättigte Farben.

SHARDS
PORCELAIN STONEWARE 120X120

BOLD PAIRINGS OF COLOUR AND MATERIALS

— 4

Accostamenti audaci di materia e colore | Des assortiments audacieux
de matière et de couleur | Kühne Kombinationen von Materie und Farbe

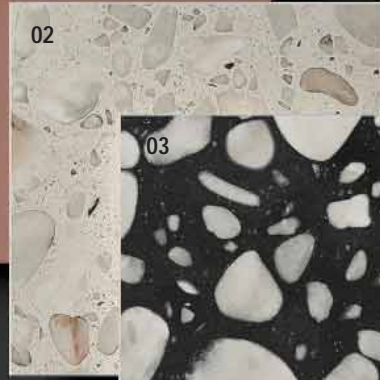
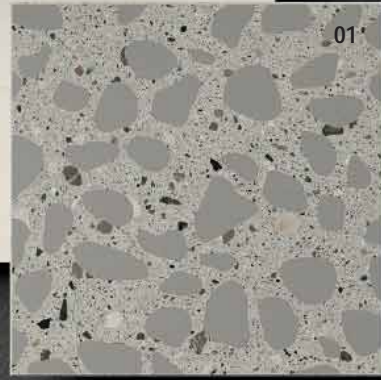
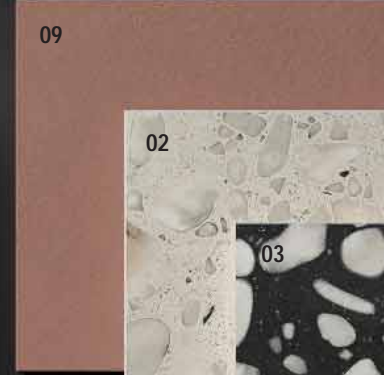
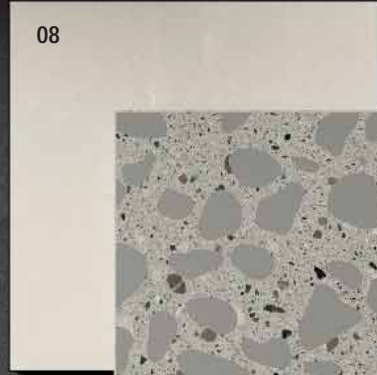
Ispirata al "terrazzo veneziano", un grande classico del design italiano, Shards è articolata in due differenti texture (Small e Large) in tre tonalità nel formato 120x120 cm dove frammenti di pietre, cocci e marmi, miscelati a cemento e calce formano un composto unico dall'aspetto irregolare e dalla matericità variabile. La superficie lucida prende volume con la rifrazione della luce, grazie alla differente granulosità dei materiali, creando eleganti riflessi che esaltano architetture minimali dal design ricercato con sofisticati richiami a una classicità senza tempo.

Inspired by Venetian *terrazzo* tiling, a great classic of Italian design, Shards features two different textures (Large and Small), in three shades in the format 120x120 cm, where fragments of stones, earthenware, and marble, mixed with cement and lime form a unique compound with an uneven appearance and variable textures. Its glossy surface increases in volume through the refraction of light, as it bounces off the different sized fragments of materials, creating stylish reflections that enhance design-led minimalist architecture with a sophisticated, timeless classicism.

S'inspirant du "terrazzo vénitien", un grand classique du design italien, Shards prévoit deux textures différentes (Small et Large) en trois tonalités dans le format 120x120 cm, où des fragments de pierre, de terre cuite et de marbre, mélangés au béton et à la chaux, forment un composé unique à l'aspect irrégulier et d'une matiéricité variable. La surface brillante acquiert du volume avec la réfraction de la lumière, grâce au caractère granuleux variable des matériaux, créant des reflets élégants qui exaltent les architectures minimales au design raffiné avec des rappels sophistiqués à un style classique hors du temps.

Inspiriert an der "venezianischen Terrasse", ein großer Klassiker des italienischen Designs, ist Shards in zwei verschiedenen Texturen (Small und Large) in drei Farbtönen im Format 120x120 cm gegliedert, bei denen mit Zement und Kalk vermengten Splintern von Steinen, Scherben und Marmor eine einzigartige Mischung mit unregelmäßigem Aussehen und variabler Materie bilden. Die polierte Oberfläche erhält dank der unterschiedlichen Körnigkeit der Materialien durch die Brechung des Lichts Volumen und ruft elegante Reflexe hervor, die minimale Architekturen von auserlesenem Design mit modernen Bezügen zu einer zeitlosen Klassik hervorheben.

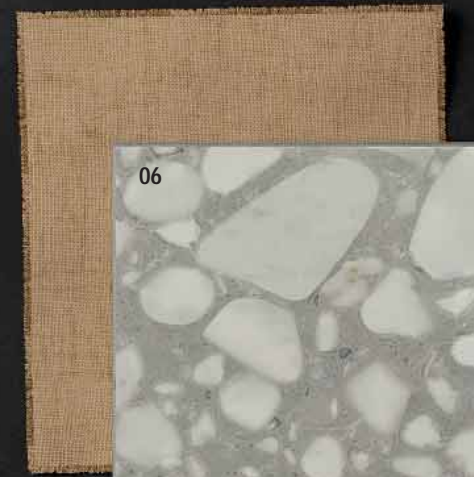




10



7



6

- 01_Shards Small Grey
- 02_Shards Large White
- 03_Shards Large Black
- 04_Shards Small White
- 05_Shards Small Black
- 06_Shards Large Grey
- 07_Shards Mosaico Ball Small White
- 08_Acidic Silver
- 09_Res Art Pottery
- 10_Res Art Lava
- 11_Res Art Cobalt



SHARDS
MATCHING COLOURS AND SURFACES

SHARDS LARGE BLACK / LARGE WHITE

— 8

RIGOROUS ELEGANCE WITH A CONTEMPORARY APPEAL

Rigorous elegance dall'appeal contemporaneo
L'élégance rigoureuse au charme contemporain
Rigorous Eleganz mit modernem Appeal



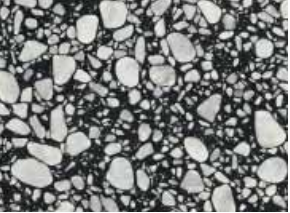




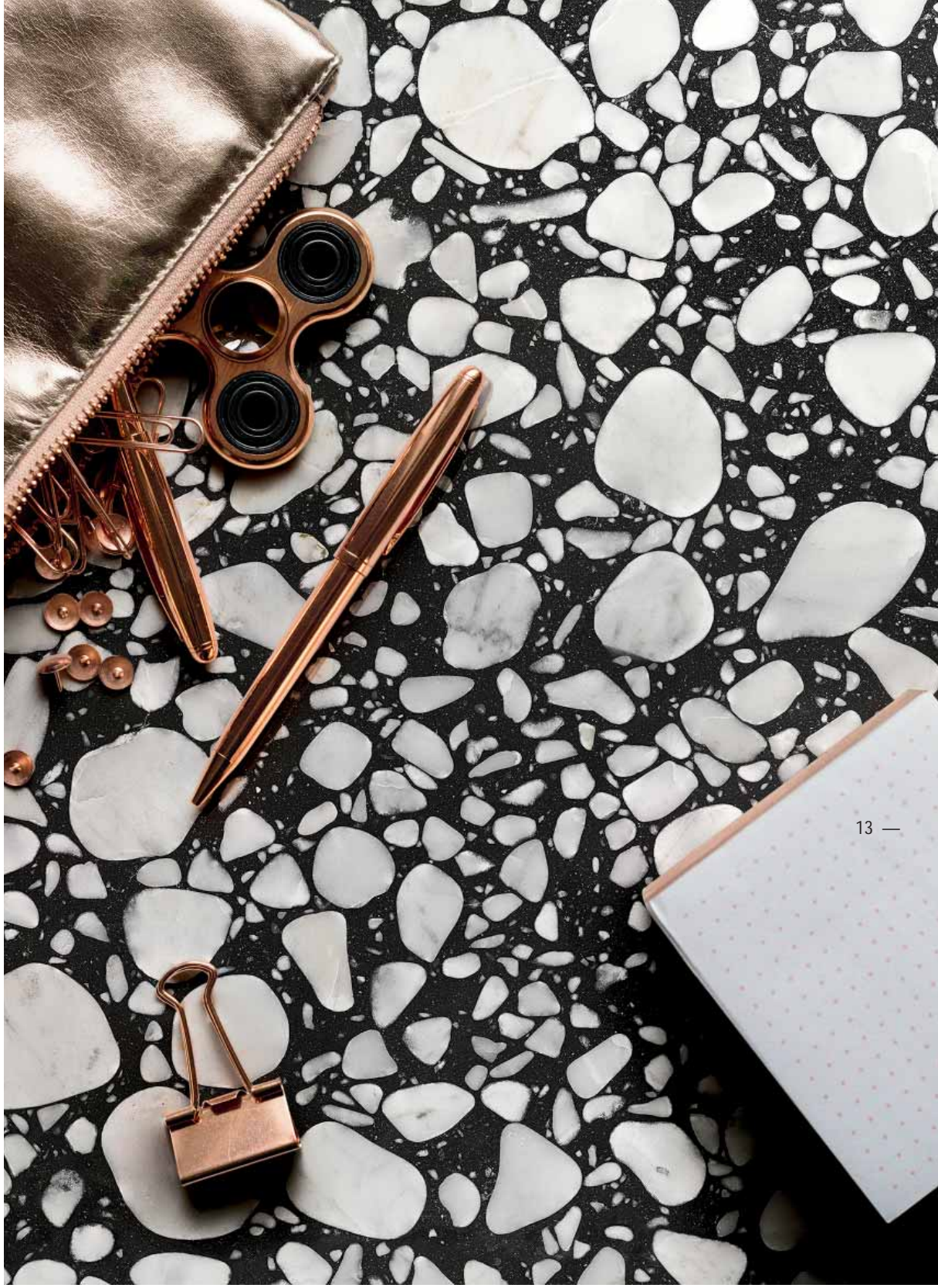
RES ART
Pottery



SHARDS
Large White



SHARDS
Large Black



Shards Large Black Glossy 120x120 . 47,24"x47,24"
 Shards Large White Glossy 120x120 . 47,24"x47,24"
 Res Art Pottery 160x320 . 62,99"x125,98"

SHARDS SMALL WHITE

INFORMAL STYLE WITH A TRADITIONAL ALLURE

Stile informale che profuma di tradizione
Un style informel qui sent bon la tradition
Informeller Stil, der nach Tradition duftet



Shards Small White 120x120 . 47,24"x47,24"
Shards Mosaico Ball Small White 29,1x33,6 . 11,46"x13,23"
Res Art Cobalt 160x320 . 62,99"x125,98"





SHARD SMALL GREY

CREATIVE CONTRASTS FOR REFINED ATMOSPHERES

Contrasti creativi per atmosfere ricercate
Des contrastes créatifs pour des atmosphères raffinées
Kreative Kontraste für ausserlesene Atmosphären



Shards Small Grey 120x120 - 47,24"x47,24"
Furniture: Acidic Silver



Shards Small Grey 120x120 . 47,24"x47,24"
Furniture: Acidic Silver

SHARD LARGE WHITE

LIGHT SHAPES FOR RADIANT BEAUTY

Leggerezza di forme per una luminosa bellezza
La légèreté des formes pour une beauté lumineuse
Leichtigkeit der Formen für eine strahlende Schönheit



Shards Large White Glossy 120x120 . 47,24"x47,24"
Res-Art Talc. 160x320 . 62,99"x125,98"



SHARD
Large White



Shards Large White Glossy 120x120 . 47,24"x47,24"
Res Art Talc 160x320 . 62,99"x125,98"

SHARD SMALL BLACK

NEW COMFORT WITH A SOPHISTICATED DESIGN

Un nuovo comfort dal design sofisticato
Un nouveau confort au design sophistiqué
Ein neuer Komfort mit einem modernen Design







SHARD
Small Black

Shards Mosaico Ball Small Black 29,1x33,6 . 11,46"x13,23"
Shards Small Black 120x120 . 47,24"x47,24"



SHARDS LARGE GREY

CROSSOVER OF SURFACES FOR UNDERSTATED ELEGANCE

Contaminazioni di superfici per una sobria eleganza
Des contamination de surface pour une élégance sobre
Vermischungen von Oberflächen für eine schlichte Eleganz



Shards Large Grey Glossy 120x120 - 47,24"x47,24"
Infinito 2.0 Statuario Extra Bookmatch Glossy 160x320 - 62,99"x125,98"
Furniture: Acidic Corten



SHARDS

Piastrelle di ceramica in gres porcellanato - Gruppo Bla UGL
Porcelain stoneware tiles - Gruppe Bla UGL
Carreaux en céramique en grès céram - Group Bla UGL
Keramikfliesen aus Feinsteinzeug - Groupe Bla UGL

THICKNESS

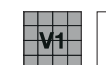


6,5 mm
SELF LEVELING

SURFACES

Glossy / Natural_Rettificato
Glossy / Natural_Rectified
Poli / Naturel_Rectifié
Glossy / Natural_Rektifiziert

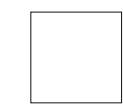
TECH INFO



BS 7976-2
AS 4586
UNE-ENV 12633

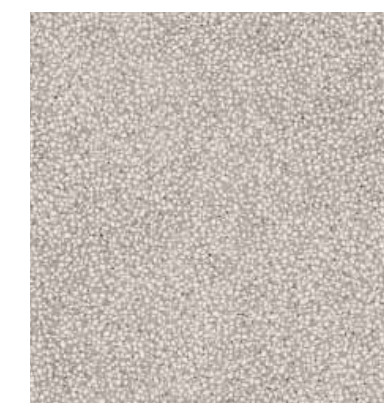
Glossy

Natural

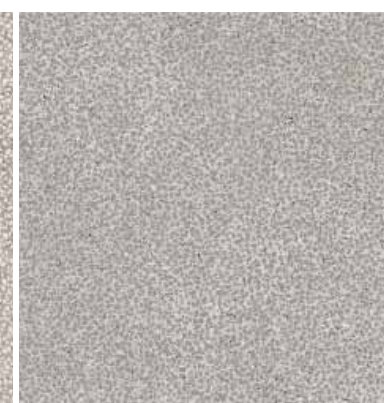


120x120
47,24"x47,24"

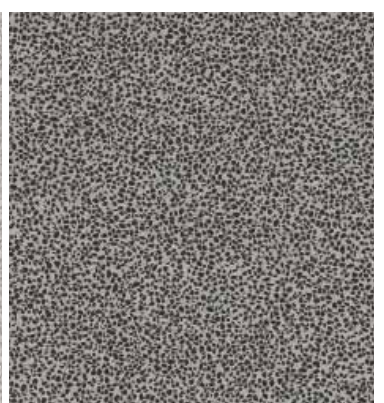
COLORS



SMALL WHITE



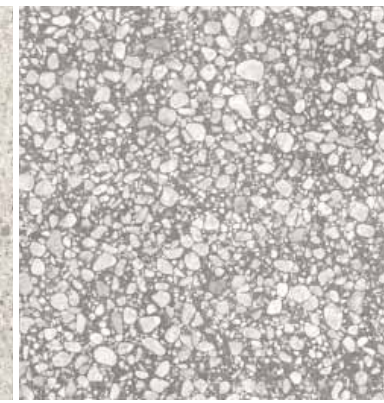
SMALL GREY



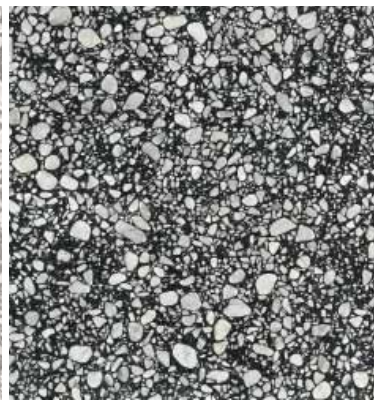
SMALL BLACK



LARGE WHITE



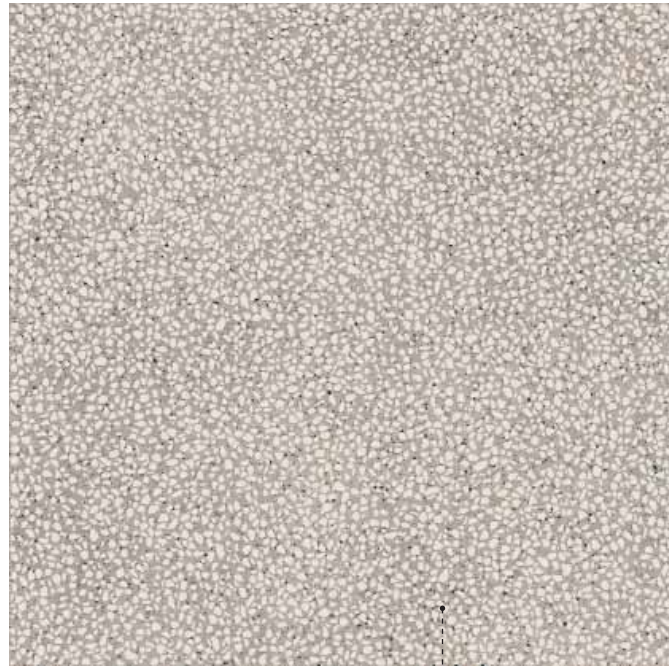
LARGE GREY



LARGE BLACK

SHARDS

REGISTERED DESIGN



WHITE

SIZES & SURFACES



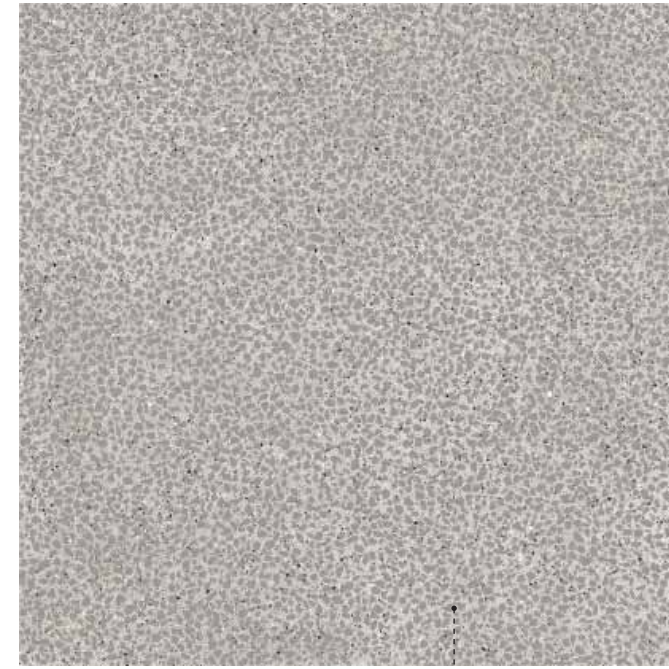
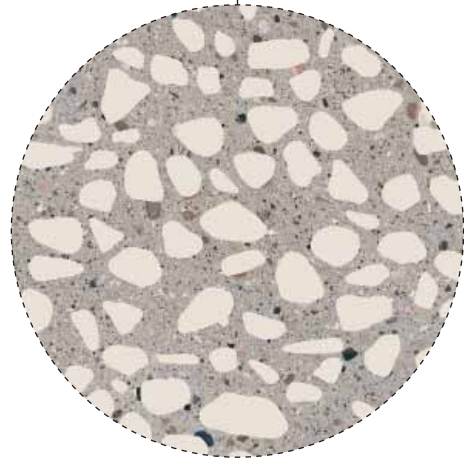
120x120
47,24"x47,24"

6,5 mm

SMALL

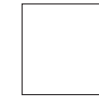
Natural Rettificato
Natural Rectified
Naturel Rectifi
Natural Rektifiziert

120x120 . 47,24"x47,24"
SHA023



GREY

SIZES & SURFACES



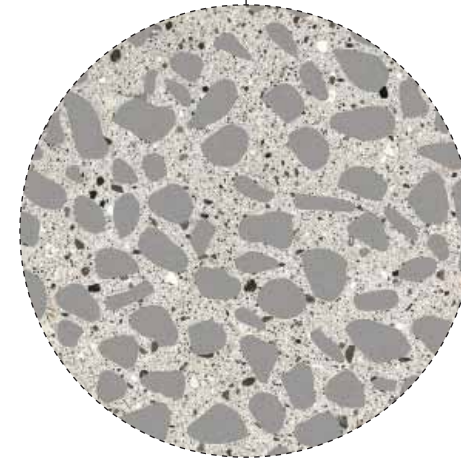
120x120
47,24"x47,24"

6,5 mm

SMALL

Natural Rettificato
Natural Rectified
Naturel Rectifi
Natural Rektifiziert

120x120 . 47,24"x47,24"
SHA025



6,5 mm
8x120 . 3,15"x47,24"
battiscopa
SHA012



6,5 mm
33x120x5 . 12,99"x47,24"x1,97"
gradino lineare LL
SHA051

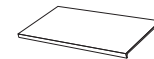


6,5 mm
33x120x5 . 12,99"x47,24"x1,97"
gradino angolare LL
SHA054

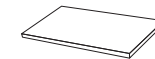
Suggested grout
111 . Silver Grey



6,5 mm
8x120 . 3,15"x47,24"
battiscopa
SHA014



6,5 mm
33x120x5 . 12,99"x47,24"x1,97"
gradino lineare LL
SHA053



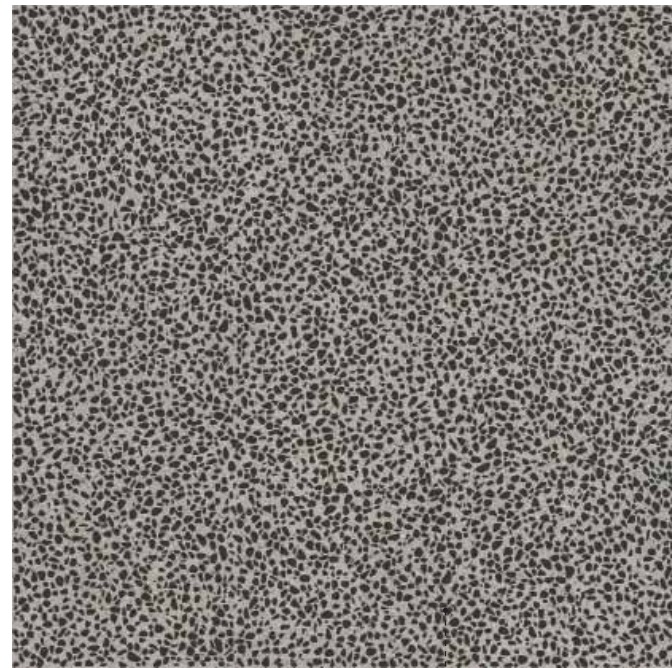
6,5 mm
33x120x5 . 12,99"x47,24"x1,97"
gradino angolare LL
SHA056

Suggested grout
110 . Manhattan 2000



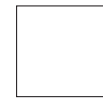
SHARDS

REGISTERED DESIGN



BLACK

SIZES & SURFACES



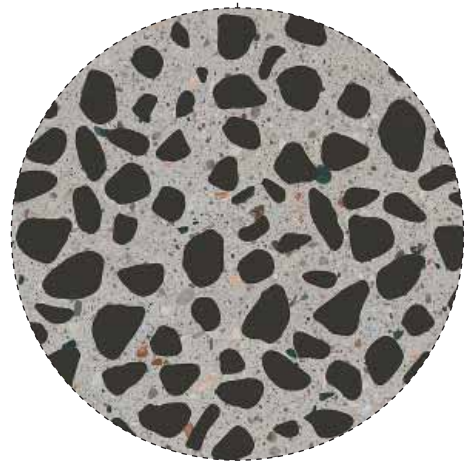
120x120
47,24"x47,24"

6,5 mm

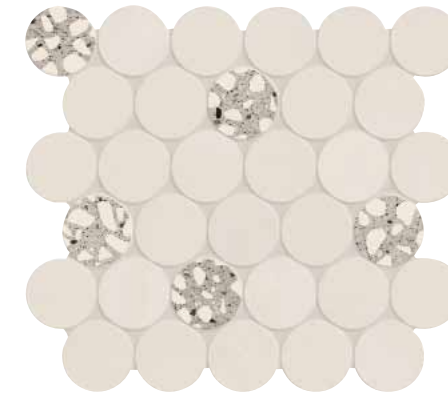
SMALL

Natural Rettificato
Natural Rectified
Naturel Rectifi
Natural Rektifiziert

120x120 . 47,24"x47,24"
SHA024

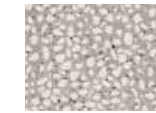


MOSAICO BALL

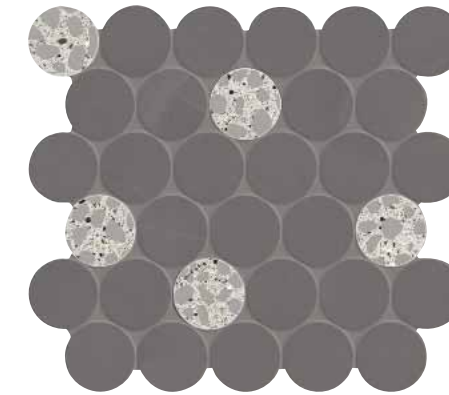


SMALL WHITE

6,5 mm
29,1x33,6 . 11,46"x13,23"
SHA047

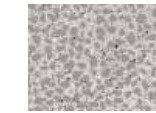


SHARDS
SMALL WHITE

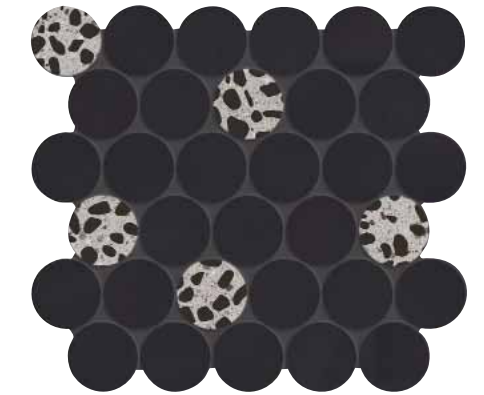


SMALL GREY

6,5 mm
29,1x33,6 . 11,46"x13,23"
SHA050



SHARDS
SMALL GREY



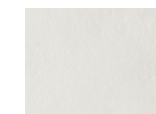
SMALL BLACK

6,5 mm
29,1x33,6 . 11,46"x13,23"
SHA049



SHARDS
SMALL BLACK

Rivestimento abbinabile | Coordinated wall tile | Revêtement à assortir | Passende Wandfliese



RES ART
TALC



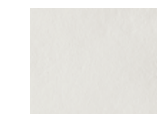
RES ART
POWDER



RES ART
POWDER



RES ART
COBALT



RES ART
TALC



RES ART
POWDER



RES ART
LAVA



RES ART
COBALT



RES ART
POTTERY



RES ART
AVIO



RES ART
OLIVE



RES ART
AVIO



6,5 mm
8x120 . 3,15"x47,24"
battiscopa
SHA013



6,5 mm
33x120x5 . 12,99"x47,24"x1,97"
gradino lineare LL
SHA052



6,5 mm
33x120x5 . 12,99"x47,24"x1,97"
gradino angolare LL
SHA055

Suggested grout
120 . Black

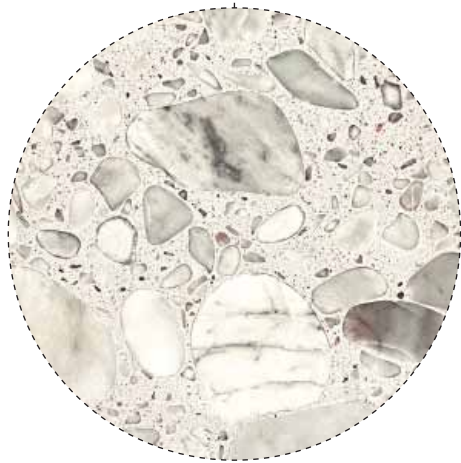


SHARDS

REGISTERED DESIGN



WHITE



SIZES & SURFACES



120x120
47,24"x47,24"

6,5 mm

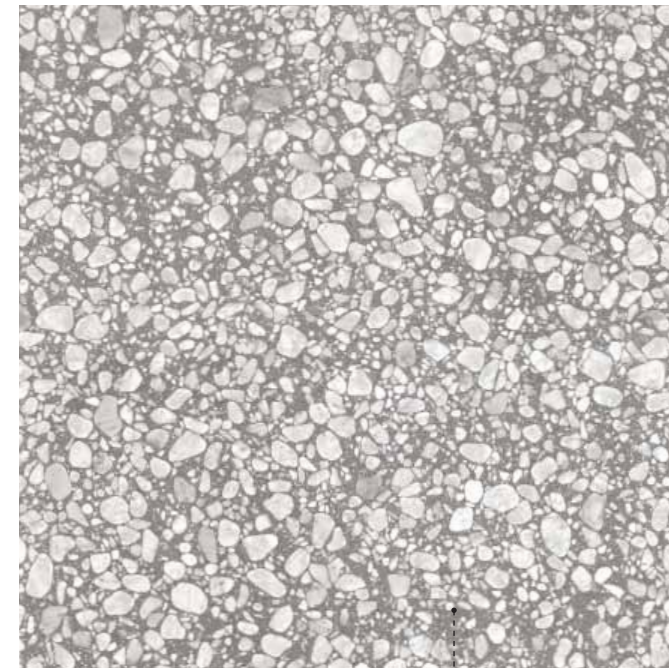
LARGE

Glossy_Rettificato
Glossy_Rectified
Poli_Rectifié
Glossy_Rektifiziert

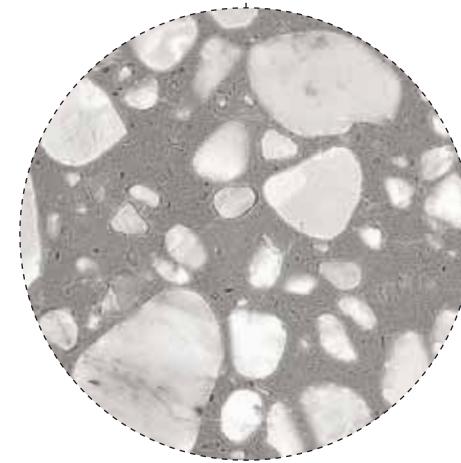
120x120 . 47,24"x47,24"
SHA030

Natural Rettificato
Natural Rectified
Naturel Rectifi
Natural Rektifiziert

120x120 . 47,24"x47,24"
SHA078



GREY



SIZES & SURFACES



120x120
47,24"x47,24"

6,5 mm

LARGE

Glossy_Rettificato
Glossy_Rectified
Poli_Rectifié
Glossy_Rektifiziert

120x120 . 47,24"x47,24"
SHA032

Natural Rettificato
Natural Rectified
Naturel Rectifi
Natural Rektifiziert

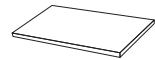
120x120 . 47,24"x47,24"
SHA080



6,5 mm
8x120 . 3,15"x47,24"
battiscopa
SHA033 glossy
SHA081 natural



6,5 mm
33x120x5 . 12,99"x47,24"x1,97"
gradino lineare LL
SHA036 glossy
SHA084 natural

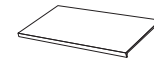


6,5 mm
33x120x5 . 12,99"x47,24"x1,97"
gradino angolare LL
SHA039 glossy
SHA087 natural

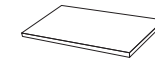
Suggested grout
103 . Moon White



6,5 mm
8x120 . 3,15"x47,24"
battiscopa
SHA035 glossy
SHA083 natural



6,5 mm
33x120x5 . 12,99"x47,24"x1,97"
gradino lineare LL
SHA038 glossy
SHA086 natural



6,5 mm
33x120x5 . 12,99"x47,24"x1,97"
gradino angolare LL
SHA041 glossy
SHA089 natural

Suggested grout
110 . Manhattan 2000

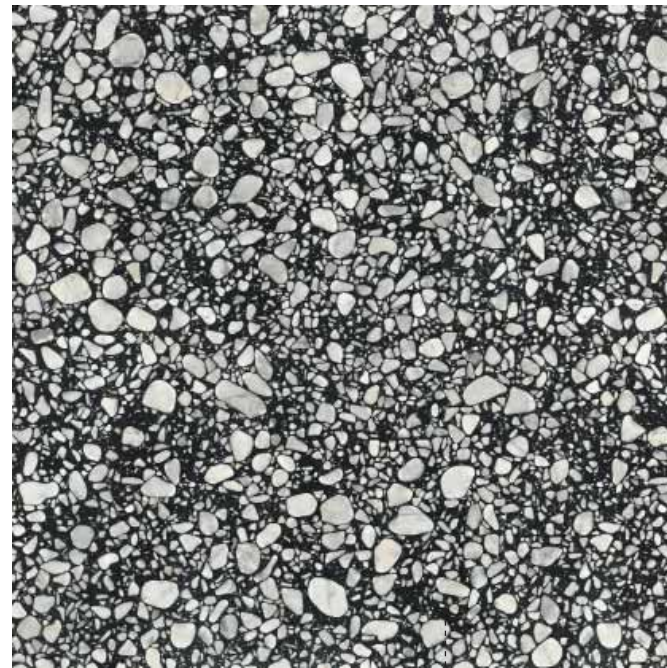


SHARDS

REGISTERED DESIGN

IMBALLI

Packages | Emballages | Verpackungen



SIZES & SURFACES



120x120
47,24"x47,24"

6,5 mm

LARGE

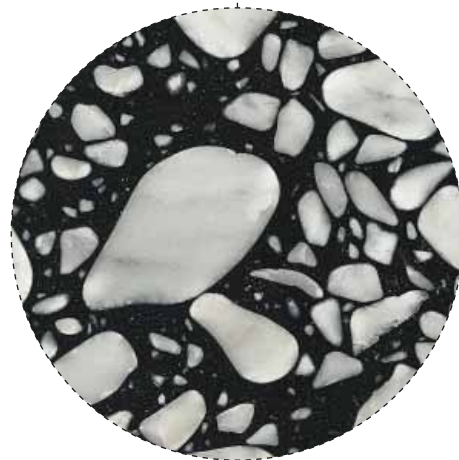
Glossy_Rettificato
Glossy_Rectified
Poli_Rectifié
Glossy_Rektifiziert

120x120 . 47,24"x47,24"
SHA031

Natural Rettificato
Natural Rectified
Naturel Rectifi
Natural Rektifiziert

120x120 . 47,24"x47,24"
SHA079

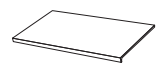
BLACK



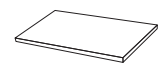
M² SQM	pcs. x	m² x	kg x	x	m² x	kg x	m² x pcs.	kg x m²	kg cassa kg box	kg totali total kg	dimensione esterna cassa crate overall dimensions
<i>Thickness 6,5 mm</i>											
120x120 Small	2	2,88	44,64	20	57,60	892,80	1,44	15,50	37	929,80	131,2x131,2x56,2 cm
120x120 Large	2	2,88	44,64	20	57,60	892,80	1,44	15,50	37	929,80	131,2x131,2x56,2 cm
29,1x33,6 Mosaico Ball Small	6	0,59	9,00	-	-	-	-	-	-	-	-
<i>PZ PCS</i>											
<i>Thickness 6,5 mm</i>											
8x120 battiscopa	7	-	10,50	-	-	-	-	-	-	-	-
33x120x5 gradino lineare LL	2	-	15,00	-	-	-	-	-	-	-	-
33x120x5 gradino angolare LL	1	-	7,50	-	-	-	-	-	-	-	-



6,5 mm
8x120 . 3,15"x47,24"
battiscopa
SHA034 glossy
SHA082 natural



6,5 mm
33x120x5 . 12,99"x47,24"x1,97"
gradino lineare LL
SHA037 glossy
SHA085 natural



6,5 mm
33x120x5 . 12,99"x47,24"x1,97"
gradino angolare LL
SHA040 glossy
SHA088 natural








Suggested grout
120 . Black









CARATTERISTICHE TECNICHE

Technical characteristics | Caracteristiques technique | Technische eigenschaften



Piastrelle di ceramica in gres porcellanato - Gruppo Bla UGL (UNI EN 14411_G) Porcelain stoneware slabs tiles - Gruppe Bla UGL (UNI EN 14411_G) Carreaux en céramique en grès céram - Group Bla UGL (UNI EN 14411_G) Keramikfliesen aus Feinsteinzeug - Groupe Bla UGL (UNI EN 14411_G)					
	Metodo di prova Test method Méthode d'essai Prüfmethode	Requisiti prescritti Required value Valeur requise Vorgeschriebener Wert	Risultato Results Résultat Ergebnis		Valutazione Valuation Évaluation Bewertung
			< 120 cm	≥ 120 cm	
 Lunghezza e larghezza Length and width Longueur et largeur Länge und Breite		± 0,6% ± 2 mm	± 0,5 mm ± 0,6%	± 0,9 mm ± 0,6%	Conforme Compliant Conforme Konform
Spessore Thickness Epaisseur Stärke		± 5% ± 0,5 mm	± 5% ± 0,5 mm	± 3% ± 0,5 mm	Conforme Compliant Conforme Konform
Rettilinearità degli spigoli Edge straightness Rectitude des arêtes Rechtlinigkeit der Kanten		± 0,5% ± 2 mm	± 0,5% ± 2 mm	± 0,6% ± 2 mm	Conforme Compliant Conforme Konform
Ortogonalità Rectangularity Orthogonalité Rechtwinkligkeit	UNI EN ISO 10545-2	± 0,6% ± 2 mm	± 1 mm ± 0,5 %	± 2 mm ± 0,5 %	Conforme Compliant Conforme Konform
Planarità Planarity Planéité Rechtwinkligkeit		± 0,5% ± 2 mm	± 0,5 % ± 2 mm	± 0,5 % ± 2 mm	Conforme Compliant Conforme Konform
Qualità della superficie Surface quality Qualité de la surface Oberflächenqualität		≥ 95%	Conforme Compliant Conforme Konform	Conforme Compliant Conforme Konform	Conforme Compliant Conforme Konform
 Assorbimento d'acqua Water Absorption Absorption d'eau Wasseraufnahme	UNI EN ISO 10545-3	≤ 0,5%	≤ 0,1%		Conforme Compliant Conforme Konform
 Resistenza alla flessione Bending strength Resistance a la flexion Biegezugfestigkeit	UNI EN ISO 10545-4	Modulo di rottura Modulus of rupture Module de rupture Bruchlast ≥ 35 N/mm² Sforzo di rottura Breaking strength Effort de rupture Bruchkraft > 1300 N/mm²	6,5 mm ≥ 50 N/mm² 10 mm ≥ 45 N/mm²		Conforme Compliant Conforme Konform
 Resistenza al gelo Frost resistance Résistance au gel Frostbeständigkeit	UNI EN ISO 10545-12	Resistente Resistant Résistant Widerstandsfähig	Ingelivo Frost proof Ingelif Frostsicher		Conforme Compliant Conforme Konform
 Resistenza agli sbalzi termici Resistance to thermal shock Résistance aux écarts de température Temperaturwechselbeständigkeit	UNI EN ISO 10545-9	Resistente Resistant Résistant Widerstandsfähig	Resistente Resistant Résistant Widerstandsfähig		Conforme Compliant Conforme Konform
 Resistenza all'abrasione profonda Deep abrasion resistance Résistance à l'abrasion profonde Tiefenverschleißbeständigkeit	UNI EN ISO 10545-6	≤ 175 mm³	6,5 mm ≤ 130 mm³ 10 mm ≤ 145 mm³		Conforme Compliant Conforme Konform
 Resistenza dei colori alla luce Colour resistance to light exposure Résistance des couleurs à la lumière Farbechtheit unter Lichteinfluss	DIN 51094	Resistente Resistant Résistant Widerstandsfähig	Resistente Resistant Résistant Widerstandsfähig		Conforme Compliant Conforme Konform

Piastrelle di ceramica in gres porcellanato - Gruppo Bla UGL (UNI EN 14411_G) Porcelain stoneware slabs tiles - Gruppe Bla UGL (UNI EN 14411_G) Carreaux en céramique en grès céram - Group Bla UGL (UNI EN 14411_G) Keramikfliesen aus Feinsteinzeug - Groupe Bla UGL (UNI EN 14411_G)					
	Metodo di prova Test method Méthode d'essai Prüfmethode	Requisiti prescritti Required value Valeur requise Vorgeschriebener Wert	Risultato Results Résultat Ergebnis		Valutazione Valuation Évaluation Bewertung
			< 120 cm	≥ 120 cm	
 Resistenza allo scivolamento Skid resistance Résistance au glissement Rutschhemmung	DIN 51130	Da R9 a R13 From R9 to R13 De R9 à R13 Von R9 bis R13	R 10		Conforme Compliant Conforme Konform
Resistenza allo scivolamento_D-COF Skid resistance_D-COF Résistance au glissement_D-COF Rutschhemmung_D-COF	ANSI A 137.1:2012	> 0,42 wet	> 0,42 wet		Conforme Compliant Conforme Konform
	BCRA	> 0,40 dry leather > 0,40 wet rubber	> 0,40 dry > 0,40 wet		Conforme Compliant Conforme Konform
 Resistenza allo scivolamento_PENDULUM Skid resistance_PENDULUM Résistance au glissement_PENDULUM Rutschhemmung_PENDULUM	BS 7976-2	on request ≥ 36	dry rubber 4S: ≥ 36 wet rubber 4S: ≥ 36 Natural		Conforme Compliant Conforme Konform
	AS 4586	on request P3	P3 Natural		Conforme Compliant Conforme Konform
	ENV 12633	on request Class 2	Class 2 Natural		Conforme Compliant Conforme Konform
 Resistenza allo scivolamento Skid resistance Résistance au glissement Rutschhemmung	DIN 51097	Da A a C From A to C De A à C Von A bis C	A+B Natural		Conforme Compliant Conforme Konform
 Resistenza all'attacco chimico Chemical resistance Resistance a l'attaque chimique Beständigkeit gegen chemikalien	UNI EN ISO 10545-13	Detergenti ad uso domestico e additivi per uso piscina Household detergents and additives for swimming pools Détergents à usage domestique et additifs pour piscines Hausreinigungsmittel und Zusatzstoffe für Schwimmbäder	Valori dichiarati Declared values Valeurs déclarées Erklärte Werte A		Conforme Compliant Conforme Konform
Resistenza all'attacco chimico Chemical resistance Resistance a l'attaque chimique Beständigkeit gegen chemikalien	UNI EN ISO 10545-13	Acidi e basi ad alta e bassa concentrazione High- and low-concentration acids and bases Acides et bases à haute et basse concentration Säuren und Basen mit hoher und niedriger Konzentration	Valori dichiarati Declared values Valeurs déclarées Erklärte Werte A; LA; HA Natural B; LB; HB Glossy		Conforme Compliant Conforme Konform
 Resistenza alle macchie Stain resistance Resistance aux taches Fleckenbeständigkeit	UNI EN ISO 10545-14	Valori dichiarati Declared values Valeurs déclarées Erklärte Werte	Valori dichiarati Declared values Valeurs déclarées Erklärte Werte		Conforme Compliant Conforme Konform
 Resistenza al fuoco Fire reaction Résistance au feu Feuerfestigkeit	EN 13501 (rev. 2005)	Resistente Resistant Résistant Widerstandsfähig	Resistente Resistant Résistant Widerstandsfähig		Conforme Compliant Conforme Konform

Maggiori informazioni per consigli di posa e manutenzione del prodotto su: www.fondovalle.it

For more information about laying and product maintenance, please visit: www.fondovalle.it | Pour de plus amples informations relatives aux conseils de pose et à l'entretien du produit, visitez le site : www.fondovalle.it | Weitere Produktinfos und Verlege- und Wartungsratschläge siehe: www.fondovalle.it



AD: Marketing Dept.

05/2021

© Ceramica Fondovalle S.p.A.

È vietata la riproduzione, totale e parziale del catalogo in tutte le sue forme.
Reproduction of this printed catalogue totally or partially, is forbidden.

Ceramica Fondovalle si riserva di apportare, qualora lo ritenesse opportuno, eventuali modifiche di natura tecnica o formale ai dati riportati in questo strumento. I colori sono puramente indicativi.
Ceramica Fondovalle reserves the right, when it deems necessary, to make technical and formal changes to the data included herein. The colours are purely illustrative.

FONDOVALLE

Ceramica Fondovalle S.p.A.

Via Rio Piodo, 12
41053 Torre Maina, (MO) Italy
T. +39 0536 934211
F. +39 0536 934250
www.fondovalle.it