

# METROPOLITAN

## METROPOLITAN NATURE

### DUBAI

#### Monoporosa Rectificado

Rectified Wall Tiles



#### PERFIL / PERFIL

1.5 cm x 100 cm (x 15.0 mm) 5/8" x 39 1/2"

METROPOLITAN NATURE CALIZA 100241427 - V3960388 - G97

METROPOLITAN NATURE SILVER 100241472 - V3960389 - G97

METROPOLITAN NATURE ANTR. 100241457 - V3960390 - G97



#### METROPOLITAN NATURE CALIZA

33.3 cm x 100 cm (x 9.2 mm) 13" x 39 1/2"

100239389 - V1440338 - G261

Butech: *Recomienda junta / Recommends joint*

Colorstuk Rapid BLANCO N 100236463 - B21522247



#### METROPOLITAN NATURE SILVER

33.3 cm x 100 cm (x 9.2 mm) 13" x 39 1/2"

100239394 - V1440342 - G261

Butech: *Recomienda junta / Recommends joint*

Colorstuk Rapid GRIS N 100236834 - B21522258



#### METROPOLITAN NATURE ANTRACITA

33.3 cm x 100 cm (x 9.2 mm) 13" x 39 1/2"

100239436 - V1440353 - G261

Butech: *Recomienda junta / Recommends joint*

Colorstuk Rapid MANHATTAN N 100236464 - B21522248

#### METROPOLITAN NATURE

En la colocación, atención a las flechas de la parte posterior

*Please see the arrows on the back*

 colocación vertical  
laid vertically

 colocación horizontal  
laid horizontally

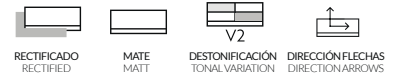
EMBALAJE PACKAGING	x CAJA BOX			x PALET			ADHESIVO*
	Modelo Model	Piezas	M <sup>2</sup> (1)	Kg (1)	Caja	M <sup>2</sup> (1)	Kg (1)
Metropolitan Nature 33.3 cm x 100 cm	4	1.33	20.71	55	73.26	1139	One-flex Premium / Fr-one n
Perfil 1.5 cm x 100 cm	15	0.45	5.60	28	12.60	157	

(1) Valores aproximados. *Approximated values*

\*Recomendación para soporte de mortero en interiores. *Interior installation over cement mortar substrate*

# METROPOLITAN METROPOLITAN NATURE DUBAI

**Monoporosa Rectificado**  
Rectified Wall Tiles



**DUBAI METROPOLITAN CALIZA**

33.3 cm x 100 cm (x 9.2 mm) 13" x 39 1/2"  
100239413 · V1440340 · G271

Butech: *Recomienda junta / Recommends joint*  
Colorstuk Rapid BLANCO N 100236463 - B21522247



**DUBAI METROPOLITAN SILVER**

33.3 cm x 100 cm (x 9.2 mm) 13" x 39 1/2"  
100239408 · V1440343 · G271

Butech: *Recomienda junta / Recommends joint*  
Colorstuk Rapid GRIS N 100236834 - B21522258



**DUBAI METROPOLITAN ANTRACITA**

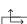
33.3 cm x 100 cm (x 9.2 mm) 13" x 39 1/2"  
100239386 · V1440339 · G271

Butech: *Recomienda junta / Recommends joint*  
Colorstuk Rapid MANHATTAN N 100236464 - B21522248

**DUBAI**

En la colocación, atención a las flechas de la parte posterior

*Please see the arrows on the back*

 colocación vertical  
laid vertically

 colocación horizontal  
laid horizontally

EMBALAJE PACKAGING	CAJA BOX			PALET			ADHESIVO*
	Modelo Model	Piezas M <sup>2</sup> (1)	Kg (1)	Caja	M <sup>2</sup> (1)	Kg (1)	Butech
Dubai 33.3 cm x 100 cm	4	1.33	20.71	55	73.26	1139	One-flex Premium / Fr-one n

(1)Valores aproximados. Approximated values  
\*Recomendación para soporte de mortero en interiores. \*Interior installation over cement mortar substrate

# METROPOLITAN

## METROPOLITAN NATURE

### DUBAI

#### Monoporosa

Wall Tiles



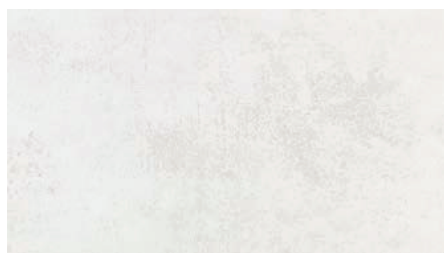
#### PERFIL / PERFIL

1.5 cm x 100 cm (x 15.0 mm) 5/8" x 39 1/2"

METROPOLITAN NATURE CALIZA 100241427 - V3960388 - G97

METROPOLITAN NATURE SILVER 100241472 - V3960389 - G97

METROPOLITAN NATURE ANTR. 100241457 - V3960390 - G97



#### METROPOLITAN NATURE CALIZA

33.3 cm x 59.2 cm (x 8.6 mm) 13" x 23 1/4"

100243405 - V1349890 - G226

Butech: Recomienda junta / *Recommends joint*

Colorstuk Rapid BLANCO N 100236463 - B21522247



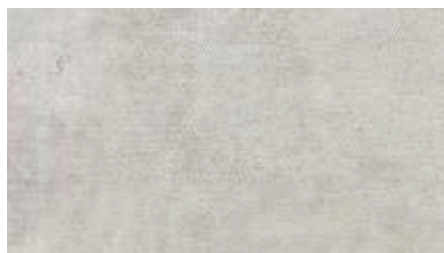
#### METROPOLITAN NATURE SILVER

33.3 cm x 59.2 cm (x 8.6 mm) 13" x 23 1/4"

100243384 - V1349889 - G226

Butech: Recomienda junta / *Recommends joint*

Colorstuk Rapid GRIS N 100236834 - B21522258



#### METROPOLITAN NATURE ANTRACITA

33.3 cm x 59.2 cm (x 8.6 mm) 13" x 23 1/4"

100243404 - V1349891 - G226

Butech: Recomienda junta / *Recommends joint*

Colorstuk Rapid MANHATTAN N 100236464 - B21522248

EMBALAJE PACKAGING	x CAJA BOX			x PALET			ADHESIVO*
	Modelo Model	Piezas	M <sup>2</sup> (1)	Kg (1)	Caja	M <sup>2</sup> (1)	Kg (1)
Metropolitan Nature 33.3 cm x 59.2 cm	6	1.18	17.98	48	56.78	863	Tixocem + / Superflex s2
Perfil 1.5 cm x 100 cm	15	0.45	5.60	28	12.60	157	

(1) Valores aproximados. *Approximated values*

\*Recomendación para soporte de mortero en interiores. *Interior installation over cement mortar substrate*



# METROPOLITAN

## METROPOLITAN NATURE

### DUBAI

#### Gres Porcelánico Rectificado / Color Masa

Rectified Porcelain Tiles / Coloured Biscuit



STON-~~KER~~



#### METROPOLITAN NATURE CALIZA

80 cm x 80 cm (x 11.1 mm) 31 1/2" x 31 1/2"

100239424 · V5700067 · G369

Butech: *Recomienda junta / Recommends joint*

Colorstuk Rapid BLANCO N 100236463 - B21522247



#### ZÓCALO / SKIRTING BOARDS

9 cm x 80 cm (x 11.1 mm) 3 1/2" x 31 1/2"

METROPOLITAN NATURE CALIZA 100261901 - V7590646 - G63

METROPOLITAN NATURE SILVER 100278455 - V7590685 - G63

METROPOLITAN NATURE ANTRACITA 100278328 - V7590684 - G63



#### HUELLA TÉCNICA (2) / STEP TILES (2)

31.6 cm x 80 cm (x 33.0 mm) 12 1/2" x 31 1/2"

METROPOLITAN NATURE CALIZA 100241444 - V7590584 - G153

METROPOLITAN NATURE SILVER 100241462 - V7590585 - G153

METROPOLITAN NATURE ANTRACITA 100241447 - V7590583 - G153



#### METROPOLITAN NATURE SILVER

80 cm x 80 cm (x 11.1 mm) 31 1/2" x 31 1/2"

100239433 · V5700062 · G369

Butech: *Recomienda junta / Recommends joint*

Colorstuk Rapid GRIS N 100236834 - B21522258

#### (2) HUELLA TÉCNICA ESQUINA DE / IZ

(2) LEFT / RIGHT CORNER STEP TILES

Consultar guía técnica.

No disponible en stock.

Consultar condiciones.

See *Technical Guide*.

Not in stock.

Check conditions

#### METROPOLITAN NATURE

Utilizar materiales de colocación específicos

para Gres Porcelánico

Use specific Porcelain Tiles setting materials



#### METROPOLITAN NATURE ANTRACITA

80 cm x 80 cm (x 11.1 mm) 31 1/2" x 31 1/2"

100239423 · V5700066 · G369

Butech: *Recomienda junta / Recommends joint*

Colorstuk Rapid MANHATTAN N 100236464 - B21522248

EMBALAJE PACKAGING	x CAJA BOX			x PALET			ADHESIVO*
	Piezas	M <sup>2</sup> (1)	Kg (1)	Caja	M <sup>2</sup> (1)	Kg (1)	Butech
Modelo Model							
Metropolitan Nature 80 cm x 80 cm	2	1.28	31.71	40	51.20	1268	One-flex Premium / Super-flex S2
Zócalo 9 cm x 80 cm	12	0.86	22.36	42	36.29	939	
Huella Técnica 31.6 cm x 80 cm	2	0.55	14.90	26	14.51	388	

(1) Valores aproximados. *Approximated values*

\*Recomendación para soporte de mortero en interiores. *\*Interior installation over cement mortar substrate*



# METROPOLITAN METROPOLITAN NATURE DUBAI



## METROPOLITAN NATURE CALIZA

59.6 cm x 59.6 cm (x 10.5 mm) 23 1/2" x 23 1/2"  
100239430 · V5590886 · G354

Butech: *Recomienda junta / Recommends joint*  
Colorstuk Rapid BLANCO N 100236463 - B21522247



## METROPOLITAN NATURE SILVER

59.6 cm x 59.6 cm (x 10.5 mm) 23 1/2" x 23 1/2"  
100239432 · V5590887 · G354

Butech: *Recomienda junta / Recommends joint*  
Colorstuk Rapid GRIS N 100236834 - B21522258



## METROPOLITAN NATURE ANTRACITA

59.6 cm x 59.6 cm (x 10.5 mm) 23 1/2" x 23 1/2"  
100239299 · V5590882 · G354

Butech: *Recomienda junta / Recommends joint*  
Colorstuk Rapid MANHATTAN N 100236464 - B21522248

## Gres Porcelánico Rectificado / Color Masa

Rectified Porcelain Tiles / Coloured Biscuit



STON-KER



## ZÓCALO / SKIRTING BOARDS

9 cm x 59.6 cm (x 10.5 mm) 3 1/2" x 23 1/2"

METROPOLITAN NATURE CALIZA 100241464 - V4460078 - G30  
METROPOLITAN NATURE SILVER 100241436 - V4460079 - G30  
METROPOLITAN NATURE ANTRACITA 100241463 - V4460080 - G30



## HUELLA TÉCNICA (2) / STEP TILES (2)

31.6 cm x 59.6 cm (x 33.0 mm) 12 1/2" x 23 1/2"

METROPOLITAN NATURE CALIZA 100241443 - V7700159 - G130  
METROPOLITAN NATURE SILVER 100241445 - V7700156 - G130  
METROPOLITAN NATURE ANTRACITA 100241461 - V7700157 - G130

## (2) HUELLA TÉCNICA ESQUINA DE / IZ

(2) LEFT / RIGHT CORNER STEP TILES

Consultar guía técnica.  
No disponible en stock.  
Consultar condiciones.  
*See Technical Guide.*  
*Not in stock.*  
*Check conditions*

## METROPOLITAN NATURE

Utilizar materiales de colocación específicos para Gres Porcelánico  
*Use specific Porcelain Tiles setting materials*

EMBALAJE PACKAGING	CAJA BOX			PALET			ADHESIVO* Butech
	Modelo Model	Piezas	M <sup>2</sup> (1)	Kg (1)	Caja	M <sup>2</sup> (1)	
Metropolitan Nature 59.6 cm x 59.6 cm	4	1.42	33.21	32	45.47	1063	One-flex Premium / Fr-one n
Zócalo 9 cm x 59.6 cm	18	0.96	22.41	56	54.06	1255	
Huella Técnica 31.6 cm x 59.6 cm	2	0.42	12.00	48	19.97	576	

(1)Valores aproximados. *Approximated values*

\*Recomendación para soporte de mortero en interiores. *\*Interior installation over cement mortar substrate*

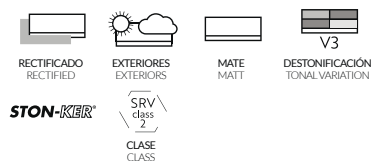
# METROPOLITAN

## METROPOLITAN NATURE

### DUBAI

#### Gres Porcelánico Rectificado / Color Masa

Rectified Porcelain Tiles / Coloured Biscuit



#### ZÓCALO / SKIRTING BOARDS

9 cm x 59.6 cm (x 10.5 mm) 3 1/2" x 23 1/2"

METROPOLITAN NATURE CALIZA 100241464 - V4460078 - G30

METROPOLITAN NATURE SILVER 100241436 - V4460079 - G30

METROPOLITAN NATURE ANTRACITA 100241463 - V4460080 - G30



#### HUELLA TÉCNICA (2) / STEP TILES (2)

31.6 cm x 59.6 cm (x 33.0 mm) 12 1/2" x 23 1/2"

METROPOLITAN NATURE CALIZA 100241443 - V7700159 - G130

METROPOLITAN NATURE SILVER 100241445 - V7700156 - G130

METROPOLITAN NATURE ANTRACITA 100241461 - V7700157 - G130

#### (2) HUELLA TÉCNICA ESQUINA DE / IZ

(2) LEFT / RIGHT CORNER STEP TILES

Consultar guía técnica.

No disponible en stock.

Consultar condiciones.

See Technical Guide.

Not in stock.

Check conditions

#### METROPOLITAN NATURE

Utilizar materiales de colocación específicos

para Gres Porcelánico

Use specific Porcelain Tiles setting materials



#### METROPOLITAN NATURE CALIZA C-2

59.6 cm x 59.6 cm (x 10.5 mm) 23 1/2" x 23 1/2"

100241850 · V5590894 · G354

Butech: Recomendación junta / Recommends joint

Colorstuk Rapid BLANCO N 100236463 - B21522247



#### METROPOLITAN NATURE SILVER C-2

59.6 cm x 59.6 cm (x 10.5 mm) 23 1/2" x 23 1/2"

100241788 · V5590896 · G354

Butech: Recomendación junta / Recommends joint

Colorstuk Rapid GRIS N 100236834 - B21522258



#### METROPOLITAN NATURE ANTRACITA C-2

59.6 cm x 59.6 cm (x 10.5 mm) 23 1/2" x 23 1/2"

100241819 · V5590895 · G354

Butech: Recomendación junta / Recommends joint

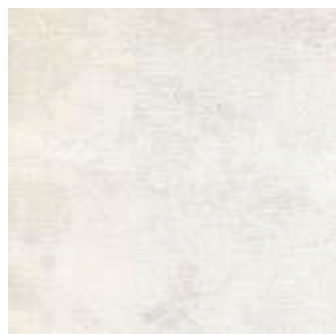
Colorstuk Rapid MANHATTAN N 100236464 - B21522248

EMBALAJE PACKAGING	x CAJA BOX			x PALET			ADHESIVO*
	Modelo Model	Piezas	M <sup>2</sup> (1)	Kg (1)	Caja	M <sup>2</sup> (1)	Kg (1)
Metropolitan Nature 59.6 cm x 59.6 cm	4	1.42	33.21	32	45.47	1063	One-flex Premium /
Zócalo 9 cm x 59.6 cm	18	0.96	22.41	56	54.06	1255	Fr-one n
Huella Técnica 31.6 cm x 59.6 cm	2	0.42	12.00	48	19.97	576	

(1) Valores aproximados. Approximated values

\*Recomendación para soporte de mortero en interiores. \*Interior installation over cement mortar substrate

# METROPOLITAN METROPOLITAN NATURE DUBAI



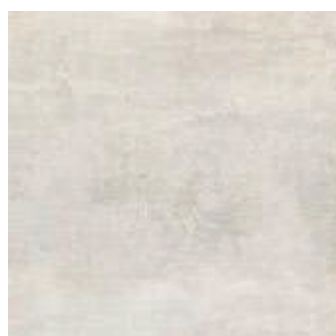
## METROPOLITAN NATURE CALIZA

44.3 cm x 44.3 cm (x 9.4 mm) 17 1/2" x 17 1/2"

100242875 · V5460081 · G311

Butech: *Recomienda junta / Recommends joint*

Colorstuk Rapid BLANCO N 100236463 - B21522247



## METROPOLITAN NATURE SILVER

44.3 cm x 44.3 cm (x 9.4 mm) 17 1/2" x 17 1/2"

100242868 · V5460078 · G311

Butech: *Recomienda junta / Recommends joint*

Colorstuk Rapid GRIS N 100236834 - B21522258



## METROPOLITAN NATURE ANTRACITA

44.3 cm x 44.3 cm (x 9.4 mm) 17 1/2" x 17 1/2"

100242874 · V5460080 · G311

Butech: *Recomienda junta / Recommends joint*

Colorstuk Rapid MANHATTAN N 100236464 - B21522248

Gres Porcelánico

Porcelain Tiles



EXTERIORES  
EXTERIORS



MATE  
MATT



V3  
DESTONIFICACIÓN  
TONAL VARIATION



## ZÓCALO / SKIRTING BOARDS

10 cm x 44.3 cm (x 9.4 mm) 4" x 17 1/2"

METROPOLITAN NATURE CALIZA 100242914 - V4859885 - G7

METROPOLITAN NATURE SILVER 100242915 - V4859886 - G7

METROPOLITAN NATURE ANTRACITA 100242913 - V4859884 - G7



## HUELLA TÉCNICA (2) / STEP TILES (2)

31.6 cm x 59.6 cm (x 33.0 mm) 12 1/2" x 23 1/2"

METROPOLITAN NATURE CALIZA 100241443 - V7700159 - G130

METROPOLITAN NATURE SILVER 100241445 - V7700156 - G130

METROPOLITAN NATURE ANTRACITA 100241461 - V7700157 - G130

## (2) HUELLA TÉCNICA ESQUINA DE / IZ

(2) LEFT / RIGHT CORNER STEP TILES

Consultar guía técnica.

No disponible en stock.

Consultar condiciones.

*See Technical Guide.*

*Not in stock.*

*Check conditions*

## METROPOLITAN NATURE

Utilizar materiales de colocación específicos

para Gres Porcelánico

*Use specific Porcelain Tiles setting materials*

EMBALAJE PACKAGING Modelo Model	CAJA BOX			PALET			ADHESIVO* Butech
	Piezas	M <sup>2</sup> (1)	Kg (1)	Caja	M <sup>2</sup> (1)	Kg (1)	
Metropolitan Nature 44.3 cm x 44.3 cm	7	1.37	29.25	52	71.43	1521	Tixocem + / Superflex s2
Zócalo 10 cm x 44.3 cm	20	0.88	17.94	68	60.24	1220	
Huella Técnica 31.6 cm x 59.6 cm	2	0.42	12.00	48	19.97	576	

(1)Valores aproximados. *Approximated values*

\*Recomendación para soporte de mortero en interiores. *\*Interior installation over cement mortar substrate*







