



OXFORD LINE 29,5X90







OXFORD SILVER 29,5X90 / MS-OXFORD SILVER LUX 30X30 / OXFORD SILVER 58,5X58,5

OXFORD

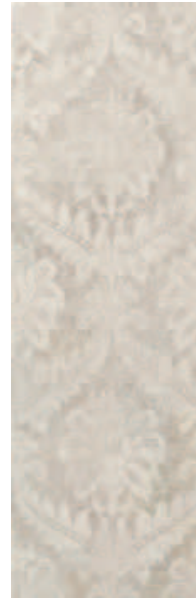
29,5X90 / 11,6"X35,4"



OXFORD SILVER
29,5X90 / 11,6"X35,4"
8000479 ● B050



OXFORD ANTRACITA
29,5X90 / 11,6"X35,4"
8000481 ● B050



OXFORD DAMASCO SILVER
29,5X90 / 11,6"X35,4"
8000515 ● B058



OXFORD DAMASCO ANTRACITA
29,5X90 / 11,6"X35,4"
8000513 ● B058



MOLDURA PLATA
6,5X29,5 / 2,6"X11,8"
8000843 ▲ Z022



ZÓCALO PLATA
20X29,5 / 7,9"X11,8"
8000780 ▲ Z042



MOLDURA DAMASCO OXFORD
5X29,5 / 2"X11,8"
8000598 ▲ Z012



ZÓCALO DAMASCO OXFORD
15X29,5 / 5,9"X11,8"
8000590 ▲ Z026



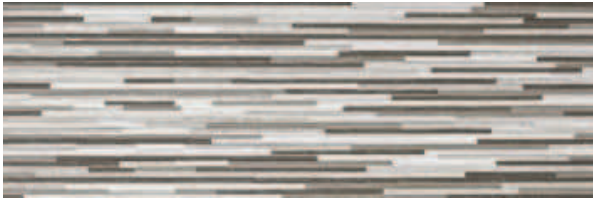
CENEFA JULIE-1
10X90 / 3,9"X35,4"
8000803 ▲ Z068



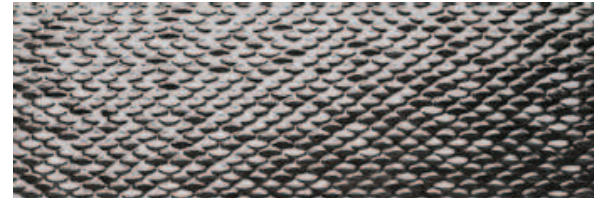
CENEFA JULIE-2
10X90 / 3,9"X35,4"
8000802 ▲ Z064

OXFORD

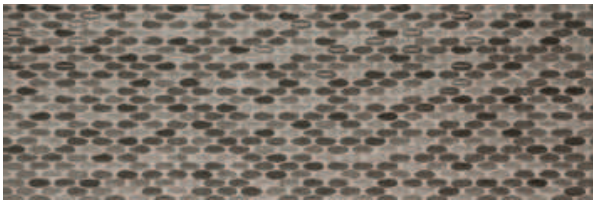
29,5X90 / 11,6"X35,4"



OXFORD LINE
29,5X90 / 11,6"X35,4"
8000147 ●B058



DECOR OXFORD SHELL PLATA
29,5X90 / 11,6"X35,4"
8000478 ▲Z068



OXFORD SHELL
29,5X90 / 11,6"X35,4"
8000149 ●B058



LISTELO ALUMINIUM
1X90 / 0,4"X35,4
8001180 ▲Z036



COORDINATED FLOOR TILES

58,5X58,5 / 23"X23"



OXFORD SILVER
58,5X58,5 / 23"X23"
8001779 ●B038

PACKING LIST

	SIZE	PIECES	SQM	Kg.	BOXES	SQM	Kg.	SIZE	PIECES	SQM	Kg.	BOXES	SQM	Kg.	SIZE	PIECES	SQM	Kg.	BOXES	SQM	Kg.		
BASE	29,5X90	4	1,06	23,60	28	29,68	660,80	ZÓCALO PLATA	20X29,5	4	0,23	4,84	126	28,98	609,84	CENEFA -1	10X90	2	0,18	3,80	42	7,56	159,60
BASE	58,5X58,5	5	1,71	34,20	24	41,04	820,80	MOLDURA PLATA	6,5X29,5	9	0,17	3,51	112	19,04	393,12	CENEFA -2	10X90	4	0,36	7,60	39	14,04	296,40
BASE SHELL/LINE	29,5X90	4	1,06	23,60	24	25,44	566,40	ZÓCALO DAMASCO	15X29,5	12	0,53	12,00	42	22,28	504,00	LISTELO	1X90	6	0,08	0,612	240	12,96	146,40
								MOLDURA DAMASCO	5X29,5	12	0,18	3,60	120	21,60	432,00								

APPROXIMATED VALUES



the beauty of the rock over time as a source
of inspiration

el desgaste de la piedra natural como fuente de inspiración
la beauté du temps qui passe sur la pierre comme source d'inspiration
красота скалы во времени как источник вдохновения