

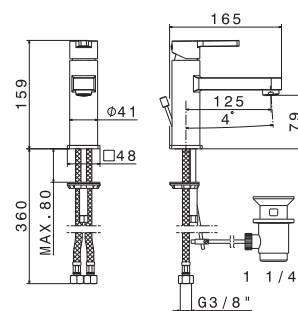
MARNA



mod. **V09011**

Miscelatore monocomando per lavabo **con scarico da 1"1/4**.
Flessibili di alimentazione F 3/8".

Single-lever basin mixer with 1"1/4 pop-up waste set.
3/8" female connection hoses.

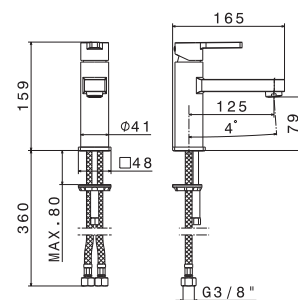


| Cod. | Finiture / Finishing | € |
|--------|----------------------|--------|
| B0.010 | cromo / chrome | 135,00 |

mod. **V09010**

Miscelatore monocomando per lavabo **senza scarico**.
Flessibili di alimentazione F 3/8".

Single-lever basin mixer without pop-up waste set.
3/8" female connection hoses.

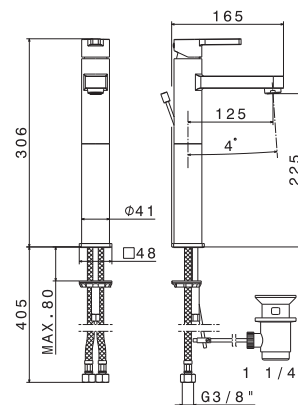


| Cod. | Finiture / Finishing | € |
|--------|----------------------|--------|
| B0.010 | cromo / chrome | 126,00 |

mod. **V09021**

Miscelatore monocomando versione alta per lavabo d'appoggio,
con scarico da 1"1/4.
Flessibili di alimentazione F 3/8".

Single-lever mixer, high version for above counter basin,
with 1"1/4 pop-up waste set.
3/8" female connection hoses.



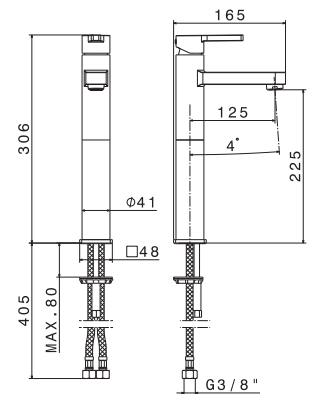
| Cod. | Finiture / Finishing | € |
|--------|----------------------|--------|
| B0.010 | cromo / chrome | 182,00 |

mod. V09020



Miscelatore monocomando versione alta per lavabo d'appoggio, **senza scarico**. Flessibili di alimentazione F 3/8".

Single-lever mixer, high version for above counter basin, without pop-up waste set. 3/8" female connection hoses.



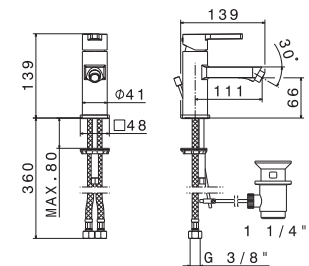
| Cod. | Finiture / Finishing | € |
|--------|----------------------|--------|
| B0.010 | cromo / chrome | 170,00 |

mod. V09071



Miscelatore monocomando per bidet **con scarico da 1"1/4**. Flessibili di alimentazione F 3/8".

Single-lever bidet mixer with 1"1/4 pop-up waste set. 3/8" female connection hoses.



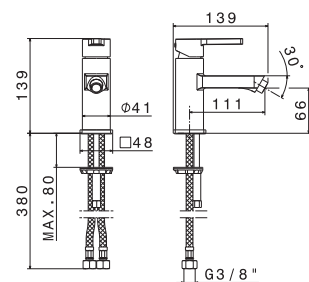
| Cod. | Finiture / Finishing | € |
|--------|----------------------|--------|
| B0.010 | cromo / chrome | 145,00 |

mod. V09070



Miscelatore monocomando per bidet **senza scarico**. Flessibili di alimentazione F 3/8".

Single-lever bidet mixer without pop-up waste set. 3/8" female connection hoses.



| Cod. | Finiture / Finishing | € |
|--------|----------------------|--------|
| B0.010 | cromo / chrome | 135,00 |

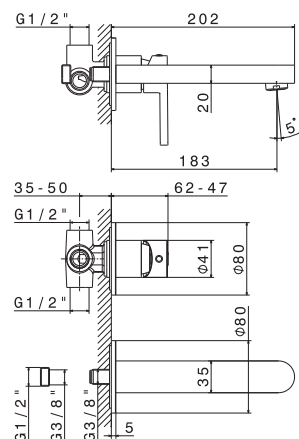
mod. **V09050**

Gruppo miscelatore monocomando a parete per lavabo, **senza scarico** e senza raccorderia di collegamento.

Basin group consisting of: single lever wall mixer and wall spout, **without pop-up waste set** and without connections.



| Cod. | Finiture / Finishing | € |
|--------|----------------------|--------|
| B0.010 | cromo / chrome | 205,00 |



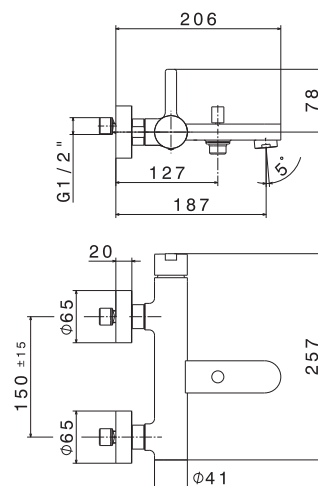
mod. **V09080**

Miscelatore monocomando vasca esterno con deviatore automatico vasca/doccia.

Single-lever exposed bath mixer with automatic diverter.



| Cod. | Finiture / Finishing | € |
|--------|----------------------|--------|
| B0.010 | cromo / chrome | 221,00 |



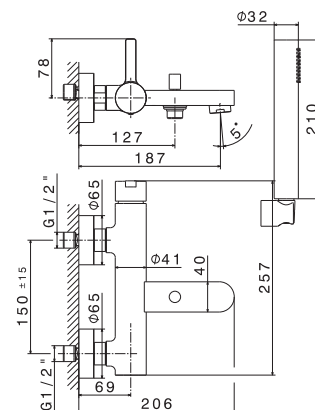
mod. **V09081**

Gruppo vasca esterno completo di miscelatore, supporto fisso, flessibile e doccia.

Complete bath group with single-lever mixer, fixed shower holder, flexible, hand shower.



| Cod. | Finiture / Finishing | € |
|--------|----------------------|--------|
| B0.010 | cromo / chrome | 246,00 |



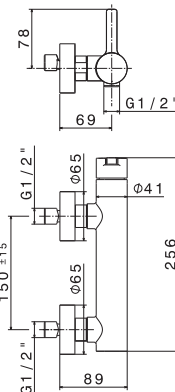
mod. V09090

Miscelatore monocomando esterno per doccia (senza dotazione asta saliscendi).

Single-lever exposed shower mixer (without shower set).



| Cod. | Finiture / Finishing | € |
|--------|----------------------|--------|
| B0.010 | cromo / chrome | 174,00 |



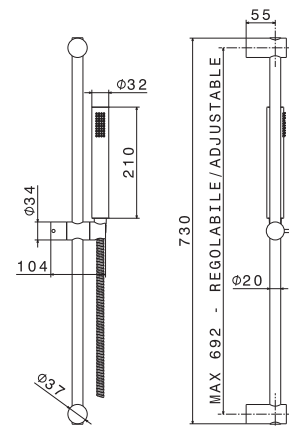
mod. V03100

Asta saliscendi in ABS completa di doccia e flessibile LL. 150 cm senza presa acqua.

Complete shower set, with ABS hand shower, flexible length cm 150, without wall union.



| Cod. | Finiture / Finishing | € |
|--------|----------------------|-------|
| B0.010 | cromo / chrome | 84,00 |



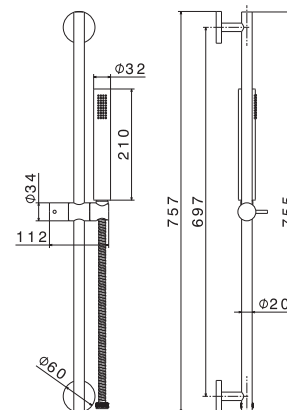
mod. V03101

Asta saliscendi in ottone, completa di doccia e flessibile LL. 150 cm senza presa acqua.

Shower set complete with brass sliding rail, hand shower, flexible length cm 150, without wall union.

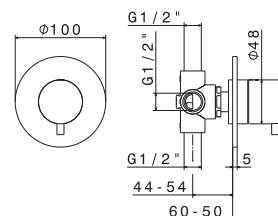


| Cod. | Finiture / Finishing | € |
|--------|----------------------|--------|
| B0.010 | cromo / chrome | 175,00 |



mod. **V09120**

Deviatore ad incasso a 4 vie.
4-way concealed diverter.

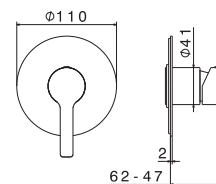


| Cod. | Finiture / Finishing | € |
|--------|----------------------|--------|
| B0.010 | cromo / chrome | 151,00 |

mod. **V09130E**

Parte esterna per miscelatore monocomando doccia da incasso, **senza parte incasso**.
Abbinare con V00002.

External part for concealed single-lever shower mixer, without concealed part.
Combine with V00002.

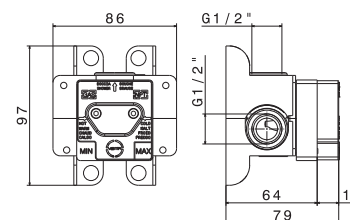


| Cod. | Finiture / Finishing | € |
|--------|----------------------|-------|
| B0.010 | cromo / chrome | 76,00 |

mod. **V00002**

Corpo incasso grezzo universale per miscelatore monocomando doccia, senza parti esterne.

Universal concealed body for single-lever shower mixer, without external parts.



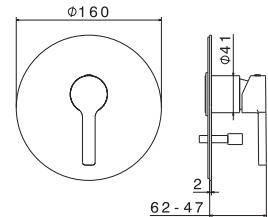
| Cod. | Finiture / Finishing | € |
|--------|----------------------|-------|
| 00.000 | neutro / neutral | 49,00 |

mod. V09140E



Parte esterna miscelatore monocomando incasso con deviatore automatico vasca/doccia, **senza parte incasso**. Abbinare con V00001.

*External part for concealed single-lever bath/shower mixer with automatic diverter, **without concealed part**. Combine with V00001.*



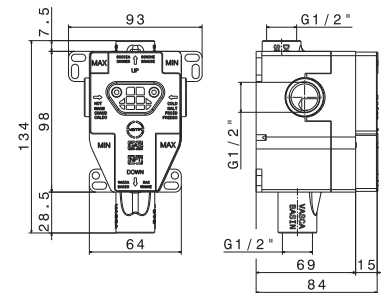
| Cod. | Finiture / Finishing | € |
|--------|----------------------|-------|
| B0.010 | cromo / chrome | 97,00 |

mod. V00001



Corpo incasso grezzo universale per miscelatore monocomando vasca/doccia con deviatore automatico, senza parti esterne.

Universal concealed body for single-lever bath/shower mixer with automatic diverter, without external parts.



| Cod. | Finiture / Finishing | € |
|--------|----------------------|-------|
| 00.000 | neutro / neutral | 91,00 |

mod. P000148



Rubinetto di arresto da 1/2" con filtro ispezionabile. Sezione tonda. **Confezione da 2 pz.**

*1/2" stop valve with cleaning filter. Round version. **Two-pcs packing.***

| Cod. | Finiture / Finishing | € |
|--------|----------------------|-------|
| B0.010 | cromo / chrome | 38,00 |

■ mod. **P000400**

Piletta da 1"1/4
con scarico a pulsante.
H. 4-65 mm.



*1"1/4 press-button drain.
H. 4-65 mm.*

| Cod. | Finiture / Finishing | € |
|--------|----------------------|-------|
| B0.010 | Cromo / chrome | 48,00 |

■ mod. **V08180**

Doccia mono-getto.



Single-jet hand shower.

| Cod. | Finiture / Finishing | € |
|--------|----------------------|-------|
| B0.010 | Cromo / chrome | 21,00 |

■ mod. **P000147**

Flessibile LL 150 cm.



Flexible length cm 150.

| Cod. | Finiture / Finishing | € |
|--------|----------------------|-------|
| B0.010 | Cromo / chrome | 16,00 |

■ mod. **P000401**

Flessibile in PVC LL. 150 cm.



PVC flexible, length cm 150.

| Cod. | Finiture / Finishing | € |
|--------|----------------------|-------|
| B0.010 | Cromo / chrome | 21,00 |

■ mod. **V13170**

Pres a acqua a parete da 1/2".



1/2" wall union.

| Cod. | Finiture / Finishing | € |
|--------|----------------------|-------|
| B0.010 | Cromo / chrome | 23,00 |

MARNA

■ mod. **V03173**

Preso acqua con supporto doccia.

Wall union with shower holder.



| Cod. | Finiture / Finishing | € |
|--------|----------------------|-------|
| B0.010 | Cromo / chrome | 55,00 |

■ mod. **V03171**

Supporto fisso a parete per doccia.

Fixed wall holder for hand shower.



| Cod. | Finiture / Finishing | € |
|--------|----------------------|------|
| B0.010 | Cromo / chrome | 5,00 |

■ mod. **V03172**

Supporto orientabile a parete per doccia.

Adjustable wall holder for hand shower.



| Cod. | Finiture / Finishing | € |
|--------|----------------------|-------|
| B0.010 | Cromo / chrome | 15,00 |

■ mod. **V09055**

Bocca erogazione a parete per **lavabo**
LL. 18 cm.

*Wall spout for **basin** group length
cm 18.*



| Cod. | Finiture / Finishing | € |
|--------|----------------------|--------|
| B0.010 | Cromo / chrome | 141,00 |

■ mod. **V09056**

Bocca erogazione a parete per **lavabo**,
versione lunga LL. 23 cm.

*Wall spout for **basin** group,
long version length cm 23.*



| Cod. | Finiture / Finishing | € |
|--------|----------------------|--------|
| B0.010 | Cromo / chrome | 151,00 |

mod. **V09145**

Bocca erogazione a parete per **gruppo vasca ad incasso** LL. 18 cm.

*Wall spout for **concealed bath group** length cm 18.*



| Cod. | Finiture / Finishing | € |
|--------|----------------------|--------|
| B0.010 | cromo / chrome | 135,00 |

mod. **V09146**

Bocca erogazione a parete per **gruppo vasca ad incasso, versione lunga** LL. 23 cm.

*Wall spout for **concealed bath group, long version** length cm 23.*



| Cod. | Finiture / Finishing | € |
|--------|----------------------|--------|
| B0.010 | cromo / chrome | 153,00 |

