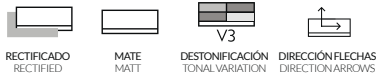


BALTIMORE BOULEVARD CONTOUR

Monoporosa Rectificado

Rectified Wall Tiles



PERFIL / PERFIL

1.5 cm x 100 cm (x 15.0 mm) 5/8" x 39 1/2"

BALTIMORE WHITE 100161972 - V3960343 - G97

BALTIMORE BEIGE 100161944 - V3960341 - G97

BALTIMORE NATURAL 100161957 - V3960339 - G97

BALTIMORE GRAY 100161971 - V3960340 - G97



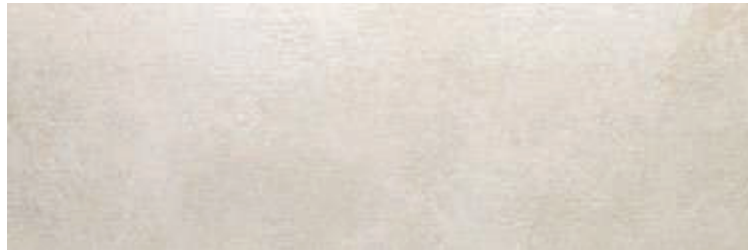
BALTIMORE WHITE

33.3 cm x 100 cm (x 9.2 mm) 13" x 39 1/2"

100161657 - V1440181 - G271

Butech: *Recomienda junta / Recommends joint*

Colorstuk Rapid BLANCO N 100236463 - B21522247



BALTIMORE BEIGE

33.3 cm x 100 cm (x 9.2 mm) 13" x 39 1/2"

100161494 - V1440171 - G271

Butech: *Recomienda junta / Recommends joint*

Colorstuk Rapid BEIGE N 100236808 - B21522252



BALTIMORE NATURAL

33.3 cm x 100 cm (x 9.2 mm) 13" x 39 1/2"

100161469 - V1440164 - G271

Butech: *Recomienda junta / Recommends joint*

Colorstuk Rapid MANHATTAN N 100236464 - B21522248



BALTIMORE GRAY

33.3 cm x 100 cm (x 9.2 mm) 13" x 39 1/2"

100161478 - V1440166 - G271

Butech: *Recomienda junta / Recommends joint*

Colorstuk Rapid CEMENTO N 100236449 - B21522249

BALTIMORE

En la colocación, atención a las flechas de la parte posterior

Please see the arrows on the back



colocación vertical
laid vertically



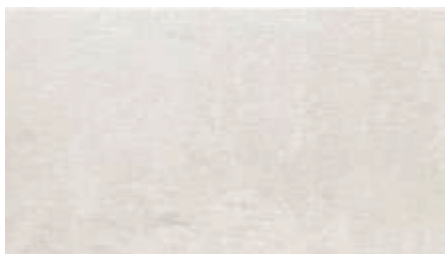
colocación horizontal
laid horizontally

EMBALAJE PACKAGING	x CAJA BOX			x PALET			ADHESIVO*
	Modelo Model	Piezas	M ² (1)	Kg (1)	Caja	M ² (1)	
Baltimore 33.3 cm x 100 cm	4	1.33	19.69	55	73.26	1083	One-flex Premium / Fr-one n
Perfil 1.5 cm x 100 cm	15	0.45	5.60	28	12.60	157	

(1) Valores aproximados. *Approximated values*

*Recomendación para soporte de mortero en interiores. *Interior installation over cement mortar substrate*

BALTIMORE BOULEVARD CONTOUR



BALTIMORE WHITE

33.3 cm x 59.2 cm (x 8.6 mm) 13" x 23 1/4"

100159635 · V1349962 · G233

Butech: *Recomienda junta / Recommends joint*

Colorstuk Rapid BLANCO N 100236463 - B21522247

Monoporosa

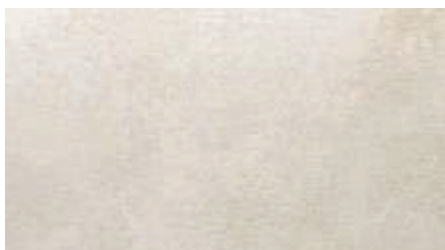
Wall Tiles



MATE
MATT



V3
DESTONIFICACIÓN
TONAL VARIATION



BALTIMORE BEIGE

33.3 cm x 59.2 cm (x 8.6 mm) 13" x 23 1/4"

100159632 · V1349960 · G233

Butech: *Recomienda junta / Recommends joint*

Colorstuk Rapid BEIGE N 100236808 - B21522252



BALTIMORE NATURAL

33.3 cm x 59.2 cm (x 8.6 mm) 13" x 23 1/4"

100159634 · V1349963 · G233

Butech: *Recomienda junta / Recommends joint*

Colorstuk Rapid MANHATTAN N 100236464 - B21522248

EMBALAJE PACKAGING	CAJA BOX			PALET			ADHESIVO*
	Modelo Model	Piezas	M ² (1)	Kg (1)	Caja	M ² (1)	Kg (1)
Baltimore 33.3 cm x 59.2 cm	6	1.18	17.98	48	56.78	863	Tixocem + / Superflex s2

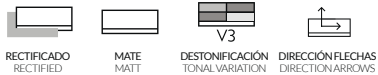
(1)Valores aproximados. Approximated values

*Recomendación para soporte de mortero en interiores. *Interior installation over cement mortar substrate

BALTIMORE BOULEVARD CONTOUR

Monoporosa Rectificado

Rectified Wall Tiles



PERFIL / PERFIL

1.5 cm x 33.3 cm (x 15.0 mm) 5/8" x 13"

BOULEVARD WHITE 100161965 - V3250004 - G77

BOULEVARD BEIGE 100161945 - V3250002 - G77

BOULEVARD NATURAL 100161973 - V3250003 - G77



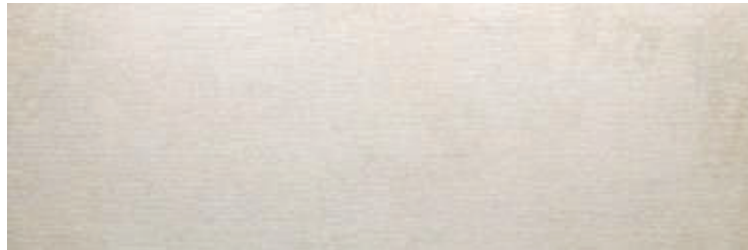
BOULEVARD WHITE

33.3 cm x 100 cm (x 9.2 mm) 13" x 39 1/2"

100161682 · V1440179 · G271

Butech: *Recomienda junta / Recommends joint*

Colorstuk Rapid BLANCO N 100236463 - B21522247



BOULEVARD BEIGE

33.3 cm x 100 cm (x 9.2 mm) 13" x 39 1/2"

100161474 · V1440167 · G271

Butech: *Recomienda junta / Recommends joint*

Colorstuk Rapid BEIGE N 100236808 - B21522252



BOULEVARD NATURAL

33.3 cm x 100 cm (x 9.2 mm) 13" x 39 1/2"

100161510 · V1440168 · G271

Butech: *Recomienda junta / Recommends joint*

Colorstuk Rapid MANHATTAN N 100236464 - B21522248

BOULEVARD

En la colocación, atención a las flechas de la parte posterior

Please see the arrows on the back

colocación vertical
laid vertically

colocación horizontal
laid horizontally

EMBALAJE PACKAGING	x CAJA BOX			x PALET			ADHESIVO*
	Modelo Model	Piezas	M ² (1)	Kg (1)	Caja	M ² (1)	
Boulevard 33.3 cm x 100 cm	4	1.33	19.69	55	73.26	1080	One-flex Premium / Fr-one n
Perfil 1.5 cm x 33.3 cm	30	0.30	3.72	42	12.59	156	

(1) Valores aproximados. *Approximated values*

*Recomendación para soporte de mortero en interiores. **Interior installation over cement mortar substrate*

BALTIMORE BOULEVARD CONTOUR



CONTOUR WHITE

33.3 cm x 100 cm (x 12.0 mm) 13" x 39 1/2"
100161691 · V1440180 · G271
Butech: *Recomienda junta / Recommends joint*
Colorstuk Rapid BLANCO N 100236463 - B21522247



CONTOUR BEIGE

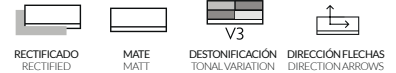
33.3 cm x 100 cm (x 12.0 mm) 13" x 39 1/2"
100161475 · V1440165 · G271
Butech: *Recomienda junta / Recommends joint*
Colorstuk Rapid BEIGE N 100236808 - B21522252



CONTOUR NATURAL

33.3 cm x 100 cm (x 12.0 mm) 13" x 39 1/2"
100161498 · V1440176 · G271
Butech: *Recomienda junta / Recommends joint*
Colorstuk Rapid MANHATTAN N 100236464 - B21522248

Monoporosa Rectificado Rectified Wall Tiles



CONTOUR

En la colocación, atención a las flechas de la parte posterior

Please see the arrows on the back

 colocación vertical
laid vertically

 colocación horizontal
laid horizontally

EMBALAJE PACKAGING	CAJA BOX			PALET			ADHESIVO*
	Modelo Model	Piezas	M ² (1)	Kg (1)	Caja	M ² (1)	Kg (1)
Contour 33.3 cm x 100 cm	3	0.99	17.06	55	54.95	938	One-flex Premium / Fr-one n

(1)Valores aproximados. Approximated values

*Recomendación para soporte de mortero en interiores. *Interior installation over cement mortar substrate

BALTIMORE BOULEVARD CONTOUR

Gres Porcelánico Rectificado / Color Masa

Rectified Porcelain Tiles / Coloured Biscuit



STON-**KER**



BALTIMORE WHITE

59.6 cm x 59.6 cm (x 10.5 mm) 23 1/2" x 23 1/2"

100161709 · V5590685 · G354

Butech: *Recomienda junta / Recommends joint*

Colorstuk Rapid BLANCO N 100236463 · B21522247



BALTIMORE BEIGE

59.6 cm x 59.6 cm (x 10.5 mm) 23 1/2" x 23 1/2"

100161577 · V5590682 · G354

Butech: *Recomienda junta / Recommends joint*

Colorstuk Rapid BEIGE N 100236808 · B21522252



ZÓCALO / SKIRTING BOARDS

9 cm x 59.6 cm (x 10.5 mm) 3 1/2" x 23 1/2"

BALTIMORE WHITE 100162474 · V4460033 · G30

BALTIMORE BEIGE 100162472 · V4460035 · G30

BALTIMORE NATURAL 100161625 · V4460030 · G30

BALTIMORE GRAY 100162473 · V4460034 · G30



HUELLA TÉCNICA (2) / STEP TILES (2)

31.6 cm x 59.6 cm (x 33.0 mm) 12 1/2" x 23 1/2"

BALTIMORE WHITE 100162482 · V7710044 · G130

BALTIMORE BEIGE 100161595 · V7710039 · G130

BALTIMORE NATURAL 100161579 · V7710040 · G130

BALTIMORE GRAY 100161578 · V7710043 · G130



BALTIMORE NATURAL

59.6 cm x 59.6 cm (x 10.5 mm) 23 1/2" x 23 1/2"

100161487 · V5590683 · G354

Butech: *Recomienda junta / Recommends joint*

Colorstuk Rapid MANHATTAN N 100236464 · B21522248



BALTIMORE GRAY

59.6 cm x 59.6 cm (x 10.5 mm) 23 1/2" x 23 1/2"

100161588 · V5590684 · G354

Butech: *Recomienda junta / Recommends joint*

Colorstuk Rapid MANHATTAN N 100236464 · B21522248

(2) HUELLA TÉCNICA ESQUINA DE / IZ

(2) LEFT / RIGHT CORNER STEP TILES

Consultar guía técnica.

No disponible en stock.

Consultar condiciones.

See *Technical Guide*.

Not in stock.

Check conditions

BALTIMORE

Utilizar materiales de colocación específicos

para Gres Porcelánico

Use specific Porcelain Tiles setting materials

EMBALAJE PACKAGING	x CAJA BOX			x PALET			ADHESIVO*
	Modelo Model	Piezas	M ² (1)	Kg (1)	Caja	M ² (1)	Kg (1)
Baltimore 59.6 cm x 59.6 cm	4	1.42	33.68	32	45.47	1078	One-flex Premium / Fr-one n
Zócalo 9 cm x 59.6 cm	18	0.97	22.70	56	54.07	1271	
Huella Técnica 31.6 cm x 59.6 cm	2	0.42	12.00	48	19.97	576	

(1) Valores aproximados. Approximated values

*Recomendación para soporte de mortero en interiores. *Interior installation over cement mortar substrate

BALTIMORE BOULEVARD CONTOUR

Gres Porcelánico
Porcelain Tiles



EXTERIORES
EXTERIORS



MATE-BRILLO
MATT-GLOSS



DESTONIFICACIÓN
TONAL VARIATION



BALTIMORE WHITE

60.2 cm x 60.2 cm (x 10.5 mm) 24" x 24"
100174014 · V5610020 · G333

Butech: *Recomienda junta / Recommends joint*
Colorstuk Rapid BLANCO N 100236463 - B21522247



BALTIMORE BEIGE

60.2 cm x 60.2 cm (x 10.5 mm) 24" x 24"
100174702 · V5610021 · G333

Butech: *Recomienda junta / Recommends joint*
Colorstuk Rapid BEIGE N 100236808 - B21522252



BALTIMORE NATURAL

60.2 cm x 60.2 cm (x 10.5 mm) 24" x 24"
100183462 · V5610024 · G333

Butech: *Recomienda junta / Recommends joint*
Colorstuk Rapid MANHATTAN N 100236464 - B21522248



ZÓCALO / SKIRTING BOARDS

9 cm x 60.2 cm (x 10.5 mm) 3 1/2" x 24"

BALTIMORE WHITE 100174056 - V7590330 - G19
BALTIMORE BEIGE 100161950 - V7590308 - G19
BALTIMORE NATURAL 100161942 - V7590309 - G19



HUELLA TÉCNICA (2) / STEP TILES (2)

31.6 cm x 59.6 cm (x 33.0 mm) 12 1/2" x 23 1/2"

BALTIMORE WHITE 100162482 - V7710044 - G130
BALTIMORE BEIGE 100161595 - V7710039 - G130
BALTIMORE NATURAL 100161579 - V7710040 - G130

(2) HUELLA TÉCNICA ESQUINA DE / IZ

(2) LEFT / RIGHT CORNER STEP TILES

Consultar guía técnica.

No disponible en stock.

Consultar condiciones.

See Technical Guide.

Not in stock.

Check conditions

BALTIMORE

Utilizar materiales de colocación específicos
para Gres Porcelánico

Use specific Porcelain Tiles setting materials

EMBALAJE PACKAGING Modelo Model	CAJA BOX			PALET			ADHESIVO* Butech
	Piezas	M ² (1)	Kg (1)	Caja	M ² (1)	Kg (1)	
Baltimore 60.2 cm x 60.2 cm	4	1.45	34.13	32	46.39	1092	One-flex Premium / Fr-one n
Zócalo 9 cm x 60.2 cm	18	0.98	23.40	56	54.61	1310	
Huella Técnica 31.6 cm x 59.6 cm	2	0.42	12.00	48	19.97	576	

(1)Valores aproximados. *Approximated values*

*Recomendación para soporte de mortero en interiores **Interior installation over cement mortar substrate*



