



## HIGH QUALITY FLOORING





K451 Silverdale Oak, Planked | H0

## EUROHOME QUALITY FLOORING – THE STYLE OF YOUR HOME.

The demands made on today's flooring are as diverse as the lifestyles and interior designs they support. While there are as many reasons for the rapidly increasing popularity of laminate flooring as there are styles, the end result is always the same: satisfying even the highest demands for comfort, functionality and beauty.

Nowhere is this more true than in the extensive EURO HOME line of high quality and exclusive laminate flooring. Whether in a plank, strip or tile look, precision aligned or randomly staggered,

the inspired matte surfaces of EURO HOME laminate flooring with glistening wood pores are designed to exquisitely exceed all needs and expectations, no matter the style. Incorporating numerous technical advances, EURO HOME flooring is not merely attractive to the eye, but it also beautifully withstands all the pressures of everyday life.

Be inspired and delight in watching your visions – and style – come to life!



## CONTENTS

Product overview	4
Structures and textures	7
Features	9
MO.RE! technology	11
Packaging information	13
collection RIVER 12	16
collection RIVER 8+	20
collection RIVER 8	24
collection RESIDENCE+	28
collection RESIDENCE	32
collection NATURE	38
collection ESSENCE	42
collection VILLA	46
collection LOFT	54
collection CLASSIC	58
Accessories	62



## EUROHOME FLOOR STUDIO

**Virtual room set at [www.euro-home.com](http://www.euro-home.com).** Take the guesswork out of planning the room of your dreams. Simply visit the Floor Studio at [www.euro-home.com](http://www.euro-home.com) and watch your ideas take shape. Go ahead, be as bold and creative as you like.

[www.euro-home.com](http://www.euro-home.com)



# PRODUCT OVERVIEW

	AC Rating	Utilization Class
<b>WATERRESISTANT LAMINATE FLOORING</b>		
collection <b>RIVER 12</b> 1285 x 192 x 12 mm	AC5	23/33
collection <b>RIVER 8+</b> 1285 x 192 x 8 mm	AC5	23/33
collection <b>RIVER 8</b> 1285 x 192 x 8 mm	AC4	23/32
<b>LAMINATE FLOORING</b>		
collection <b>RESIDENCE+</b> 1285 x 192 x 10 mm	AC6	23/32
collection <b>RESIDENCE</b> 1285 x 192 x 10 mm	AC4	23/32
collection <b>NATURE</b> 1285 x 192 x 8 mm	AC5	23/33
collection <b>ESSENCE</b> 635 x 327 x 8 mm	AC4	23/32
collection <b>VILLA</b> 1285 x 192 x 8 mm	AC4	23/32
collection <b>LOFT</b> 1285 x 192 x 8 mm	AC4	23/32
collection <b>CLASSIC</b> 1285 x 192 x 7 mm	AC3	23/31

\* The guarantee is valid for domestic use according to the conditions of guarantee (detailed terms of guarantee: [www.euro-home.com](http://www.euro-home.com)).

\*\* Tested germs: Staphylococcus aureus \*\*\* Selected decors



Guarantee\*      Locking system      A.B.C.\*\*      Eco friendly      V-Groove      Microscratch Protect      Authentic Embossed      MO.RE!

**30**  
YEARS  
guarantee



1cllic 2go pure



A.B.C.  
anti bacterial comfort



eco friendly



groove



microscratch protect



authentic embossed



**30**  
YEARS  
guarantee



1cllic 2go pure



A.B.C.  
anti bacterial comfort



eco friendly



groove



authentic embossed



**20**  
YEARS  
guarantee



1cllic 2go pure



A.B.C.  
anti bacterial comfort



eco friendly



groove



authentic embossed



**30**  
YEARS  
guarantee



1cllic 2go pure



A.B.C.  
anti bacterial comfort



eco friendly



groove



authentic embossed

**30**  
YEARS  
guarantee



1cllic 2go pure



A.B.C.  
anti bacterial comfort



eco friendly



groove



authentic embossed

**30**  
YEARS  
guarantee



1cllic 2go pure



A.B.C.  
anti bacterial comfort



eco friendly



groove



authentic embossed

**20**  
YEARS  
guarantee



1cllic 2go pure



A.B.C.  
anti bacterial comfort



eco friendly



groove



authentic embossed

**20**  
YEARS  
guarantee



1cllic 2go pure



A.B.C.  
anti bacterial comfort



eco friendly



groove



authentic embossed

**20**  
YEARS  
guarantee



twin clic



A.B.C.  
anti bacterial comfort



eco friendly

**15**  
YEARS  
guarantee



twin clic



A.B.C.  
anti bacterial comfort



eco friendly



## STRUCTURES & TEXTURES



Carpenter Mill Oak (CM) -  
Authentic Embossed



Villa Scandinavia (VS) -  
Authentic Embossed



Old English Oak (OE) -  
Authentic Embossed



Historic Oak (HO) -  
Authentic Embossed



Oiled Slate (OS) -  
Authentic Embossed



Rustic Chestnut (RC) -  
Authentic Embossed



Royal Oak (RO) -  
Authentic Embossed



Palace Oak (PO) -  
Authentic Embossed



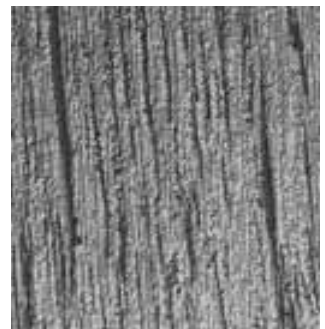
Nature Line (NL)



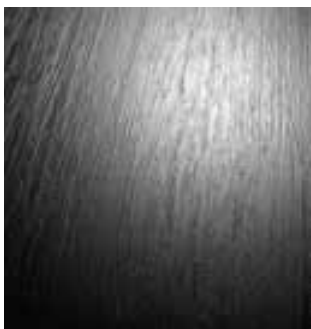
Rust (RT)



Rustic Finish (RF)



Used Wood (UW)



Grained Timber (GT)



Antique Stone (AS)





## FEATURES



### ANTI BACTERIAL COMFORT

You naturally want to keep your floor as clean and germ-free as possible. We can't see germs, but we all know the problems they can cause if left unchecked. Allergies can be aggravated and illness can result. A.B.C. inhibits the growth of bacteria on your flooring and provides you with the peace-off-mind that comes from a healthy home environment.



### ECO FRIENDLY

All floors are environmentally friendly as standard made of 90% wood sourced from sustainably managed forests. What's more, the entire production chain - from raw materials to the finished product - has been certified and is regularly inspected by independent experts, ensuring peace of mind for you - and protection of our environment.



### LIGHT-RESISTANT

All EURO HOME floors are light-resistant according to level 6, the highest on the blue wool scale.



### 4-SIDED BEVELLED EDGES

The planks have bevelled edges on all four sides of the panel to ensure an authentic floorboard appearance.



### AUTHENTIC EMBOSSED

The high quality Authentic Embossed structures feature elegant contrasting and a thrilling multi-gloss effect that emphasises the depth of the structure with matt and gloss elements that reflect the light differently. The synchronous pores follow the grain of the decor, meaning they flawlessly mimic the character of natural wood.



### MICROSCRATCH PROTECT

This especially durable surface will protect your floors even better against microscratches which can occur through heavy use. With Microscratch Protect, your flooring will be well-protected against fine scratches and everyday wear and tear.



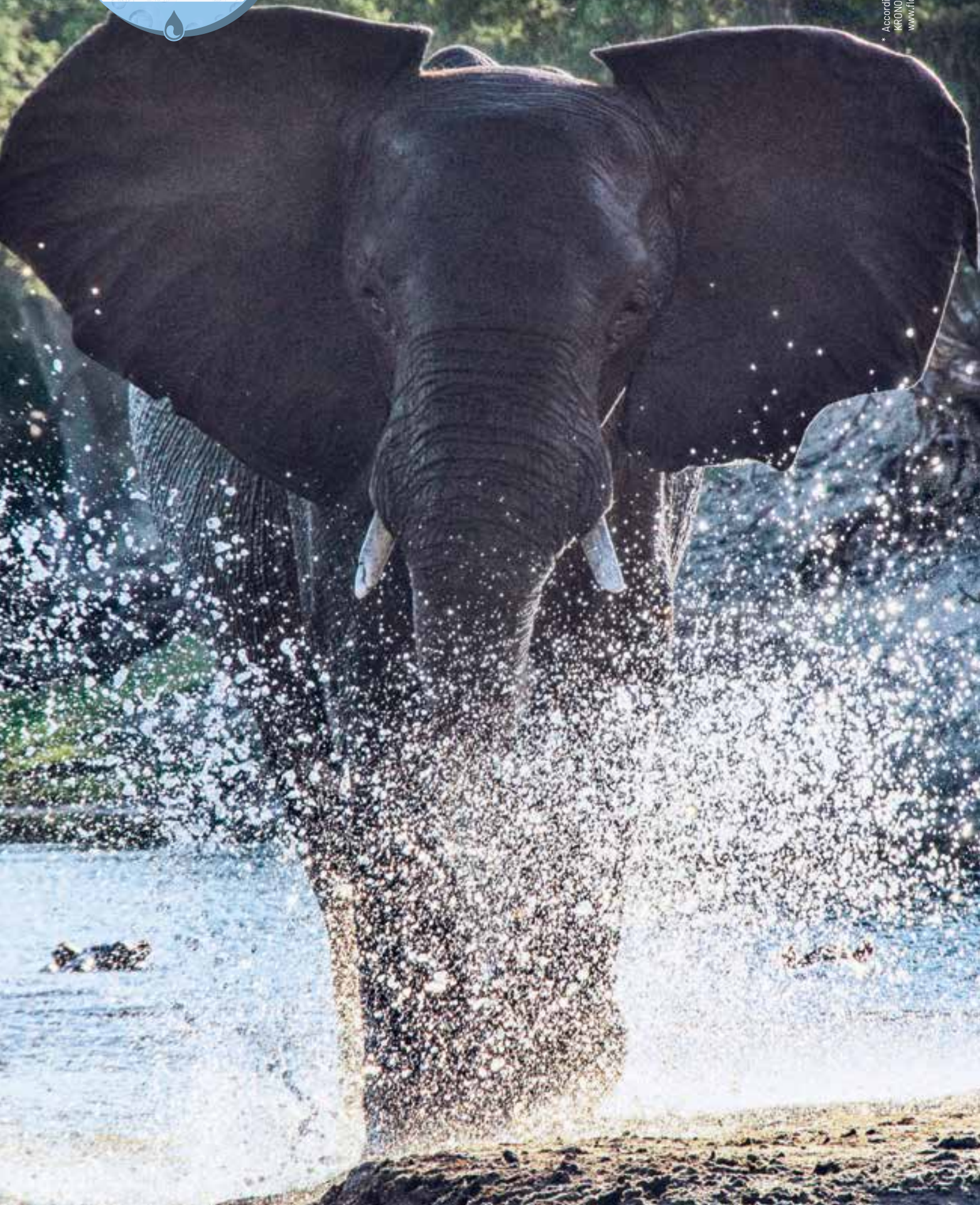
### INSTALLATION

The EURO HOME installation systems have been specifically designed to make fitting your laminate flooring as easy and hassle free as possible. The click profiles allow individual panels to be joined together quickly with minimal tools or complications.



\* Tested germs: Staphylococcus aureus





\* According to works standard specification  
KRONSPAN Werkstoff Nr. 403,  
[www.floor-with-more.com](http://www.floor-with-more.com).



# TAKE MORE. ENDURE MORE. WITHSTAND MORE.

**NEW!**

RIVER FLOORS WITH  
MO.RE! TECHNOLOGY



#### MO.RE! RELIABILITY

Floors featuring MO.RE! technology offer you as much as 48 hours of splash-water protection.\*



#### ANTIBACTERIAL COMFORT

It goes without saying that keeping your floor as clean and bacteria-free as possible is important to you. The A.B.C. surface\*\* does not provide a basis for bacteria to grow. With regular cleaning, you and your family can enjoy everyday life without any worries.



#### PET PROOF

Thanks to their robust surface, MO.RE! technology and the antibacterial comfort, EURO HOME River floors are eminently suitable for households with pets.

## HOW MO.RE! TECHNOLOGY WORKS

MO.RE! technology is based on a new substrate formulation. This makes the floor significantly less prone to swelling and therefore more resistant to the effects of water than conventional laminate floors.

Spilled a drink? Knocked over the mop bucket? Has a flower pot leaked onto the floor? There's no reason to panic: floors featuring MO.RE! technology can withstand such mishaps. You can wipe up the liquid in peace and don't need to worry about whether your floor has been damaged. MO.RE! makes this possible!

\* According to works standard specification KRONOSPAN WN-103, [www.floor-with-more.com](http://www.floor-with-more.com).

\*\* Tested germs: Staphylococcus aureus Spilled



mo.re!  
MOISTURE RESISTANCE



## PACKAGING INFORMATION

	Panel Size	Thickness	Weight/Pack. [kg]	Panels/Pack.	m <sup>2</sup> /Pack.	Pack./Pallet = m <sup>2</sup>
collection RIVER 12	1285 x 192 mm	12 mm	15	6	1.48	52 = 77
collection RIVER 8+	1285 x 192 mm	8 mm	15	9	2.22	52 = 115
collection RIVER 8	1285 x 192 mm	8 mm	15	9	2.22	52 = 115
collection RESIDENCE+	1285 x 192 mm	10 mm	15	7	1.73	52 = 90
collection RESIDENCE	1285 x 192 mm	10 mm	15	7	1.73	52 = 90
collection NATURE	1285 x 192 mm	8 mm	15	9	2.22	40 = 89
collection ESSENCE	635 x 327 mm	8 mm	15	11	2.28	32 = 73
collection VILLA	1285 x 192 mm	8 mm	15	9	2.22	40 = 89
collection LOFT	1285 x 192 mm	8 mm	15	9	2.22	40 = 89
collection CLASSIC	1285 x 192 mm	7 mm	15	10	2.47	40 = 99







**authentic  
embossed**

## THE GENUINE LOOK AND FEEL OF AUTHENTIC WOODEN FLOORING.

The unrivalled beauty of a genuine wood floor. With all the benefits – a great look, warm feel, authentic ambience – and none of the drawbacks. Authentic Embossed laminates create the true look and feel of wooden flooring yet are extremely durable, moisture-proof and easy to clean. Combining perfectly reproduced surface features with the added convenience of high-quality laminate, the Authentic Embossed collection beautifully adds the welcoming look and feel of wood to any room.

[www.euro-home.com](http://www.euro-home.com)







5967 Sterling Asian Oak, Planked INL

CLASS **33/AC5**

12 mm



Domestic use with heavy utilization



Commercial use with heavy utilization

EN 13329



guarantee



1click 2go pure



groove



anti bacterial comfort



authentic embossed



microscratch protect



pet proof



eco friendly

\*The guarantee is valid for domestic use according to the conditions of guarantee.

\*\* Tested germs: Staphylococcus aureus

\*\*\* Selected decors





## THE FLOOR THAT CAN DO MO.RE!



#### ADVANTAGES:

- Bevelled edges on all four sides of the panel
- Pet proof
- Light-resistant and colorfast
- 1clic 2go pure: Clickable short and long edges

Total thickness: 12 mm  
Surface area: 1285 x 192 mm  
Panels/Pack.: 6 pieces (1.48 m<sup>2</sup>)  
Weight/Pack.: 15 kg



collection  
RIVER 12

RIVER 12

AC5, Class 33 (EN 13329), 1285 x 192 x 12 mm

5985 Sherwood Oak  
Planked | UW



5948 Renaissance Oak  
Planked | H0



5967 Sterling Asian Oak  
Planked | NL



8096 San Diego Oak  
Planked | RF







mo.re!  
MOISTURE RESISTANCE 



K477 Natural Carpenter Oak, Planked I CM

CLASS 33/AC5

8 mm



Domestic use with heavy utilization



Commercial use with heavy utilization

EN 13329



guarantee



1 clic 2 go pure



groove



anti bacterial comfort



authentic embossed



pet proof



eco friendly

\* The guarantee is valid for domestic use according to the conditions of guarantee.

\*\* Tested germs: Staphylococcus aureus

\*\*\* Selected decors





# TAKES MORE THANKS TO MO.RE!



#### ADVANTAGES:

- Bevelled edges on all four sides of the panel
- Pet proof
- Light-resistant and colorfast
- 1clic 2go pure: Clickable short and long edges



Total thickness: 8 mm  
Surface area: 1285 x 192 mm  
Panels/Pack.: 9 pieces (2.22 m<sup>2</sup>)  
Weight/Pack.: 15 kg

collection  
RIVER 8+

RIVER 8+

AC5, Class 33 (EN 13329), 1285 x 192 x 8 mm



K475 Vigin Scandi Larch  
Planked | VS



K477 Natural Carpenter Oak  
Planked | CM



K476 | Inca Carpenter Oak  
Planked | CM





K478 Mushroom Carpenter Oak  
Planked | CM



K224 Wild West Oak  
Planked | NL



mo.re!  
MOISTURE RESISTANCE 

K478 Mushroom Carpenter Oak, Planked | CM



K485 Natural Sterling Oak, Planked I NL

CLASS 32/AC4

8 mm



Domestic use with heavy utilization



Commercial use with general utilization

EN 13329



20 YEARS guarantee



1 clic 2 go pure



4 groove



anti bacterial comfort



FEELS REAL authentic embossed



pet proof



eco friendly

\*The guarantee is valid for domestic use according to the conditions of guarantee.

\*\* Tested germs: Staphylococcus aureus

\*\*\* Selected decors





WITHSTANDS  
MO.RE! EVERY-  
DAY MISHAPS.



ADVANTAGES:

- Bevelled edges on all four sides of the panel
- Pet proof
- Light-resistant and colorfast
- 1click 2go pure: Clickable short and long edges



Total thickness: 8 mm  
Surface area: 1285 x 192 mm  
Panels/Pack.: 9 pieces (2.22 m<sup>2</sup>)  
Weight/Pack.: 15 kg

collection  
RIVER 8

RIVER 8

AC4, Class 32 (EN 13329), 1285 x 192 x 8 mm

K485 Natural Sterling Oak  
Planked | NL



K325 Silver Shadow Oak  
Planked | RO



K483 Antique Sterling Oak  
Planked | NL



K327 Hillside Oak  
Planked | RO





K451 Silverdale Oak  
Planked | H0



K482 Twilight Sterling Oak  
Planked | NL





K326 Sundance Oak, Planked I R0

# CLASS 32/AC6

## 10 mm



Domestic use with heavy utilization



Commercial use with general utilization

EN 13329



\*The guarantee is valid for domestic use according to the conditions of guarantee.

\*\* Tested germs: Staphylococcus aureus





## STRIKING FLOORBOARD AESTHETICS.



#### ADVANTAGES:

- Abrasion class AC6
- Bevelled edges on all four sides of the panel
- Matt surface with Authentic Embossed glossy pores
- 1cllic 2go pure: Clickable short and long edges

Total thickness: 10 mm  
Surface area: 1285 x 192 mm  
Panels/Pack.: 7 pieces (1.73 m<sup>2</sup>)  
Weight/Pack.: 15 kg

collection  
**RESIDENCE+**

RESIDENCE+  
AC6, Class 32 (EN 13329), 1285 x 192 x 10 mm



K326 Sundance Oak  
Planked | R0



K392 Atomic Oak  
Planked | R0









K412 Doubloon Oak, Planked | OE

CLASS **32/AC4**

10 mm



Domestic use with heavy utilization



Commercial use with general utilization

EN 13329



guarantee



1 clic 2 go pure



groove



anti bacterial comfort



authentic embossed



eco friendly

\* The guarantee is valid for domestic use according to the conditions of guarantee.

\*\* Tested germs: Staphylococcus aureus





## CLASSIC CHARM IN A NEW DESIGN.



ADVANTAGES:

- Bevelled edges on all four sides of the panel
- Matt surface with Authentic Embossed glossy pores
- 1clic 2go pure: Clickable short and long edges

Total thickness: 10 mm  
Surface area: 1285 x 192 mm  
Panels/Pack.: 7 pieces (1.73 m<sup>2</sup>)  
Weight/Pack.: 15 kg

collection  
RESIDENCE



RESIDENCE

AC4, Class 32 (EN 13329), 1285 x 192 x 10 mm



5537 Tawny Chestnut  
Planked | RC



K412 Doubloon Oak  
Planked | OE

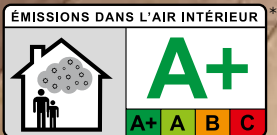








[www.blauer-engel.de/uz176](http://www.blauer-engel.de/uz176)



EN 14041:2004/AC:2006; C<sub>fl</sub>-s1; E1; D5; PCP < 5ppm; 0,08 W/(m·K),  
Bodenbeläge für die Verwendung in Gebäuden,  
DOP: LW0012017/NB 0766; NB 0767;  
Kronoflooring GmbH, Mühlbacher Str.1, 01561 Lampertswalde, Germany,  
DoP siehe <http://www.euro-home.com/terms-of-guarantee>

\*1 Statement on level of emission of volatile substances in indoor air posing a toxic threat during inhaling - on a scale from A+ (very low-emission) to C (high-emission). For further information: [www.eco-institut.de/en/portfolio/emissions-dans-lair-interieur](http://www.eco-institut.de/en/portfolio/emissions-dans-lair-interieur)  
\*2 [www.eco-institut.de/en](http://www.eco-institut.de/en) \*3 [www.pefc.org](http://www.pefc.org) \*\* [www.scsglobalservices.com/floorscore](http://www.scsglobalservices.com/floorscore)





**eco  
friendly**

LOVE NATURE.  
LOVE EUROHOME.

The beauty of nature masterfully reproduced – this is what EURO HOME flooring is all about. A deep respect for nature is at the heart of everything we do. You can read how we go about this in our sustainability policy – and see it in our products. Our woods come exclusively from responsibly managed forests. A quality that you can see, touch and feel. And a wholesome experience that simply feels good. For the good of nature.

[www.euro-home.com](http://www.euro-home.com)





5947 Historic Oak, Planked I HO

CLASS 33/AC5

8 mm



Domestic use with heavy utilization



Commercial use with heavy utilization

EN 13329



\*The guarantee is valid for domestic use according to the conditions of guarantee.

\*\* Tested germs: Staphylococcus aureus



## THE BEAUTY OF NATURE.



#### ADVANTAGES:

- Bevelled edges on all four sides of the panel
- Matt surface with Authentic Embossed glossy pores
- 1clic 2go pure: Clickable short and long edges

Total thickness: 8 mm  
Surface area: 1285 x 192 mm  
Panels/Pack.: 9 pieces (2.22 m<sup>2</sup>)  
Weight/Pack.: 15 kg

collection  
NATURE



NATURE

AC5, Class 33 (EN 13329), 1285 x 192 x 8 mm



5947 Historic Oak  
Planked | HO



K413 Blackwater Oak  
Planked | OE









K389 Nightfall Slate, Tile 10S

CLASS 32/AC4

8 mm



Domestic use with heavy utilization



Commercial use with general utilization

EN 13329



guarantee



1 clic 2 go pure



groove



anti bacterial comfort



authentic embossed



eco friendly

\* The guarantee is valid for domestic use according to the conditions of guarantee.

\*\* Tested germs: Staphylococcus aureus

\*\*\* Selected decors





## ATTRACTIVE CERAMIC TILES LOOK.



#### ADVANTAGES:

- Bevelled edges on all four sides of the panel
- Easy to clean and hygienic
- 1clíc 2go pure: Clickable short and long edges

Total thickness: 8 mm  
Surface area: 635 x 327 mm  
Panels/Pack.: 11 pieces (2.28 m<sup>2</sup>)  
Weight/Pack.: 15 kg

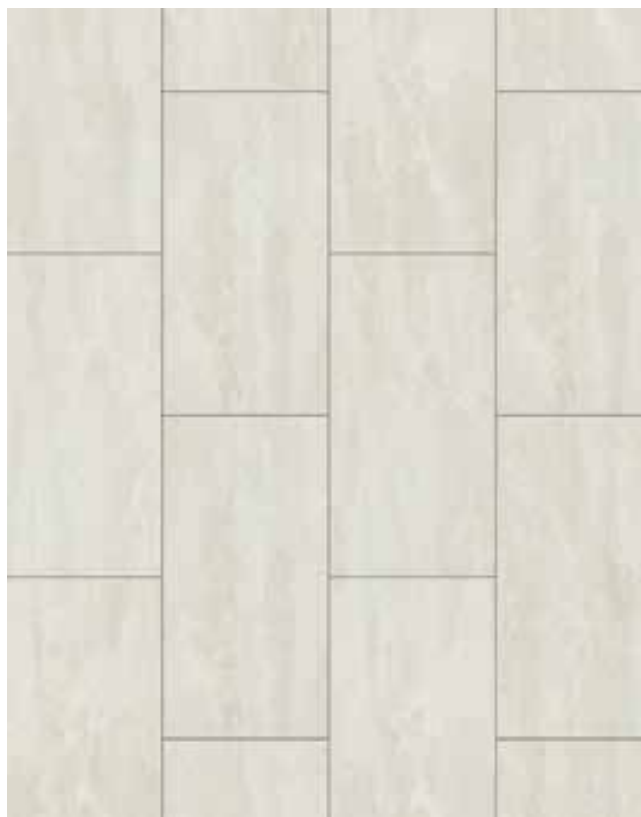
collection  
ESSENCE

ESSENCE

AC4, Class 32 (EN 13329), 635 x 327 x 8 mm



K385 Ice Flow  
Tile | RT



K035 Crosstown Traffic  
Tile | AS



K389 Nightfall Slate  
Tile | OS









K419 Armoury Oak, Planked I GT

CLASS 32/AC4

8 mm



Domestic use with heavy utilization



Commercial use with general utilization

EN 13329



guarantee



1 clic 2 go pure



groove



anti bacterial comfort



authentic embossed



eco friendly

\*The guarantee is valid for domestic use according to the conditions of guarantee.

\*\* Tested germs: Staphylococcus aureus

\*\*\* Selected decors





## CHARMING FLOORBOARD EFFECT.



#### ADVANTAGES:

- Bevelled edges on all four sides of the panel
- Easy to clean and hygienic
- 1clic 2go pure: Clickable short and long edges

Total thickness: 8 mm  
Surface area: 1285 x 192 mm  
Panels/Pack.: 9 pieces (2.22 m<sup>2</sup>)  
Weight/Pack.: 15 kg

collection  
VILLA

VILLA

AC4, Class 32 (EN 13329), 1285 x 192 x 8 mm

5966 Khaki Oak  
Planked | NL



K453 Biscotti Oak  
Planked | HO



K452 Ashland Oak  
Planked | HO



K266 Hayfield Oak  
Planked | PO





K419 Armoury Oak  
Planked | GT



5985 Sherwood Oak  
Planked | GT



K450 Firebrand Oak  
Planked | HO



5966 Khaki Oak, Planked | NL

VILLA

AC4, Class 32 (EN 13329), 1285 x 192 x 8 mm



K484 Misty Sterling Oak  
Planked | NL



K408 Outback Pine  
Planked | NL



K268 Wolfsback Oak  
Planked | PO





K418 Longbow Oak  
Planked | GT



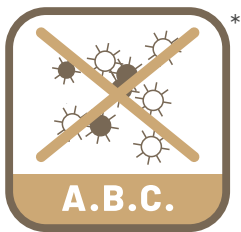
K064 Elemental Oak  
Planked | NL



K418 Longbow Oak, Planked | GT







**anti  
bacterial  
comfort**

## A.B.C. ANTI BACTERIAL COMFORT

You naturally want to keep your floor as clean and germ-free as possible, especially if you've got little ones or pets running around. We can't see germs, but we all know the problems they can cause if left unchecked. Allergies can be aggravated and illness can result. A.B.C. does not allow for germs to grow. Germs can be present on a floor from many sources such as shoes, spills or animals etc, but EURO HOME A.B.C. Anti Bacterial Comfort, works alongside a hygienic cleaning regime, to create peace of mind and a healthy environment.

\* Tested germs: Staphylococcus aureus

[www.euro-home.com](http://www.euro-home.com)





K395 Tornado Oak, Planked I NL

CLASS 32/AC4

8 mm



Domestic use with heavy utilization



Commercial use with general utilization

EN 13329



guarantee



twin clic



anti bacterial comfort



eco friendly

\*The guarantee is valid for domestic use according to the conditions of guarantee.

\*\* Tested germs: Staphylococcus aureus





FOR STUNNING  
FLOOR  
EFFECTS.



ADVANTAGES:

- Tougher than wood
- Easy to clean and hygienic
- Easy to install

Total thickness: 8 mm  
Surface area: 1285 x 192 mm  
Panels/Pack.: 9 pieces (2.22 m<sup>2</sup>)  
Weight/Pack.: 15 kg

collection  
LOFT

LOFT

AC4, Class 32 (EN 13329), 1285 x 192 x 8 mm

K396 Skydive Oak  
Planked | NL



K394 Valkyrie Oak  
Planked | NL



K395 Tornado Oak  
Planked | NL



K040 Urban Driftwood  
Multistrip | GT





5529 Oregon  
Planked | NL



4283 Flaxen Oak  
2 Strip | NL



5958 Cabana Driftwood  
Multistrip | NL



K040 Urban Driftwood, Multistrip | GT



K056 Main Oak, 2 Strip I GT

CLASS 31/AC3

7 mm



Domestic use with heavy utilization



Commercial use with moderate utilization

EN 13329



guarantee



twin clic



anti bacterial comfort



eco friendly

\*The guarantee is valid for domestic use according to the conditions of guarantee.

\*\* Tested germs: Staphylococcus aureus





FAVOURITE  
FOR EVERYDAY  
LIVING.



ADVANTAGES:

- Tougher than wood
- Easy to clean and hygienic
- Easy to install

Total thickness: 7 mm  
Surface area: 1285 x 192 mm  
Panels/Pack.: 10 pieces (2.47 m<sup>2</sup>)  
Weight/Pack.: 15 kg

collection  
CLASSIC

CLASSIC

AC3, Class 31(EN 13329), 1285 x 192 x 7 mm

K056 Main Oak  
2 Strip | GT



5236 Greenland Oak  
Planked | RF



7209 Liberty Oak  
Planked | NL



8812 Urban Legend  
2 Strip | NL





K071 Studio Oak  
2 Strip | GT



K281 Smugglers Cove Oak  
Planked | GT



K071 Studio Oak, 2 Strip | GT



Underlay: XPS 5.0

## ACCESSORIES

### Underlays

Depending on the situation in the room, attention must be paid to the correct underlay material when installing the flooring. For this we offer different underlays which can be found in our Flooring Accessories catalogue.



## Skirting boards

Choose from a range of skirting in various decors to suit all EURO HOME floors. Our clever fixing system makes it quick and simple to achieve a perfect installation. Please find here a small selection of our skirting.



K40C  
2600 x 40 x 19 mm



K58C  
2600 x 58 x 18 mm



Trend skirting board,  
shaped  
2600 x 58 x 17 mm  
2600 x 70 x 17 mm  
2600 x 100 x 17 mm

## Mounting parts

Suitable for various skirting boards.



15 meter skirting boards can be easily and professionally fitted with the contents of one packet. The set is supplied complete with screws and wall plugs.

## Floor profiles

Floor profiles enable you to create smooth crossovers between different rooms or flooring. End profiles also ensure perfect edge finishes.



### Transition profile

For level flooring. For screw or click-in fixing. Available in the following metallic finishes: stainless steel, silver and sand anodised.

900 mm or 2700 mm



### End profile

For clean finishes and joints at walls and other boundaries. Available in the following metallic finishes: stainless steel, silver and sand anodised.

900 mm or 2700 mm



### Ramp profile

For different level flooring. For screw or click-in fixing. Available in the following metallic finishes: stainless steel, silver and sand anodised.

900 mm or 2700 mm

## Corner pieces

Available for skirting systems K40C and K58C.



End caps, Internal and External corners are available in different colours.



## Laminate cleaner

Clean your new laminate floor immediately after it has been installed to remove any dust created during the job. First, sweep with a broom or use a vacuum cleaner. Next, apply our laminate cleaner. This has been specially formulated to prevent water getting into open joints and not to leave any film that would attract dust.



K483 Antique Sterling Oak, Planked | NL

Product information in this brochure is correct at time of going to publication. The company has a policy of continuous product development and reserves the right to change any product specifications given in this brochure. Due to the variations in the printing process, colors in this brochure may be subject to deviation from the actual products. 05/22/01

