



atlantictiles



REVESTIMIENTO SANDSTONE BEIGE / STRUCTURE BEIGE / PAVIMENTO SANDSTONE BEIGE



REVESTIMIENTO SANDSTONE BEIGE / LUX BEIGE / PAVIMENTO SANDSTONE BEIGE

SANDSTONE

29,5X90 / 11.6”X35.4”



SANDSTONE BEIGE
29,5X90 / 11.6”X35.4”
●MA100



SANDSTONE PEARL
29,5X90 / 11.6”X35.4”
●MA100



SANDSTONE STRUCTURE BEIGE
29,5X90 / 11.6”X35.4”
●MA110



SANDSTONE STRUCTURE PEARL
29,5X90 / 11.6”X35.4”
●MA110

SANDSTONE

29,5X90 / 11.6"X35.4"



SANDSTONE LUX BEIGE
29,5X90 / 11.6"X35.4"
●MA110



SANDSTONE LUX PEARL
29,5X90 / 11.6"X35.4"
●MA110



BRISTOL LINE
29,5X90 / 11.6"X35.4"
●MA110









OXFORD LINE
29,5X90 / 11.6"X35.4"
●MA110

MOLDURA PERLAS ORO
0,6X25 / 0.2"X9.8"
▲PA041

MOLDURA PERLAS PLATA
0,6X25 / 0.2"X9.8"
▲PA041

LISTELO ALUMINIUM
1X90 / 0.4"X35.4"
▲PA230

EMBALAJE · PACKING LIST

																									
	FORMATO SIZE	PIEZAS PIECES	SQM SQM	Kg. Kg.	CAJAS BOXES	SQM SQM	Kg. Kg.		FORMATO SIZE	PIEZAS PIECES	SQM SQM	Kg. Kg.	CAJAS BOXES	SQM SQM	Kg. Kg.		FORMATO SIZE	PIEZAS PIECES	SQM SQM	Kg. Kg.	CAJAS BOXES	SQM SQM	Kg. Kg.		
BASE	29,5X90	4	1,06	22,40	24/28*	25,44/29,68*	537,60/627,20*		BASE LINE/LUX/STRUCTURE	29,5X90	4	1,06	22,40	24	25,44	537,60		MOLDURA PERLAS	0,6X25	21	0,351	0,69	---	---	---
									LISTELO	1X90	6	---	---	---	---	---									

*PACKING EN VIGOR DURANTE EL 2015 / *PACKING INTO FORCE DURING 2015

VALORES APROXIMADOS / APPROXIMATED VALUES

SANDSTONE

60X60 / 23.6"X23.6"



SANDSTONE BEIGE
60X60 / 23.6"X23.6"
●MA090

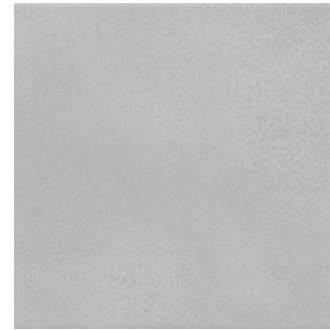


SANDSTONE PEARL
60X60 / 23.6"X23.6"
●MA090

43X43 / 16.9"X16.9"



SANDSTONE ALMOND
43X43 / 16.9"X16.9"
●MA020



SANDSTONE SMOKE
43X43 / 16.9"X16.9"
●MA020

PIEZAS ESPECIALES • SPECIAL PIECES

RODAPIÉ	MOSAICO	PELDAÑO	RANURADO
8X60	30X30	60X60	60X60
8X43	---	43X43	43X43

EMBALAJE • PACKING LIST

	FORMATO SIZE	PIEZAS PIECES	SQM SQM	Kg. Kg.	CAJAS BOXES	SQM SQM	Kg. Kg.
BASE	60X60	3	1,06	25,77	36	38,16	927,72
BASE	43X43	6	1,11	24,21	52	57,72	1258,92

*VALORES APROXIMADOS / APPROXIMATED VALUES



Colour reproduction is approximate. Tiles atlantic reserves the right to alter or modify the products listed here.

Environmental information

This catalogue was printed on ecological paper 100% free of chlorine gas. This paper is suitable for recycling. When you no longer need me, please recycle me.

La reproducción de los colores es aproximada. Atlantic tiles se reserva el derecho de alterar o modificar los productos aquí relacionados.

Información medioambiental

Este catálogo ha sido impreso en papel ecológico 100% libre de gas cloro. Este papel es apto para su posterior reciclado. Por favor, cuando ya no me necesites, recicla-me.

La reproduction des couleurs peut être inexacte. Atlantic tiles se réserve le droit de changer ou de modifier les produits présentés ici.

Information environnementale

Ce catalogue a été imprimé sur du papier écologique garanti 100% sans chlore. Ce papier peut être recyclé. Quand vous n'aurez plus besoin de moi, recyclez-moi!

Передача цвета приближительна. Atlantic tiles оставляет за собой право изменять и модифицировать изделия, указанные в данном каталоге.

Информация об окружающей среде

Этот каталог издан на 100% экологически чистой бумаге, не содержащей хлористого газа. Данная бумага подлежит последующей переработке. Когда во мне больше нет необходимости, пожалуйста, отправьте меня на повторную переработку.

The background of the entire image is a close-up, slightly blurred view of a wall or floor covered in square tiles. Each tile features a different intricate, embossed or carved design in a light beige or cream color against a slightly darker beige background. The designs include various floral motifs, geometric patterns, and scrollwork. The tiles are arranged in a grid, with the perspective slightly angled.

atlantictiles

Pol. Ind. Miralcamp, C/ Travesía Sonella 1
12200 ONDA - Castellón - SPAIN
Tel. +34 964 224 830 - Fax +34 964 222 953
export@atlantictiles.es - www.atlantictiles.es