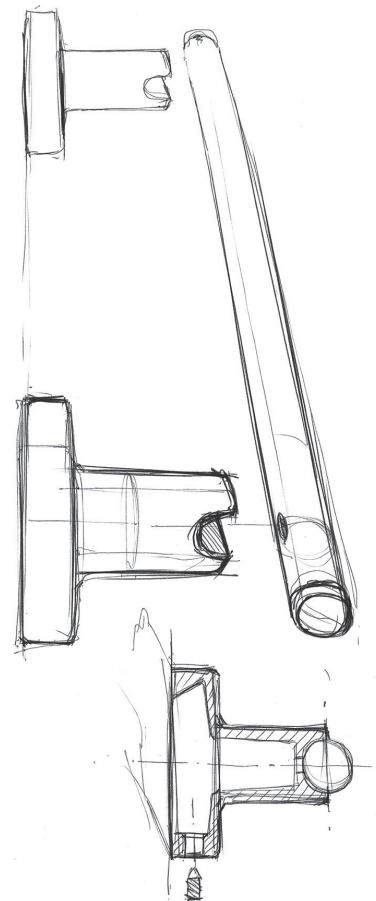




1.2 TECNO PROJECT COLLECTION

The architectural favorite design with firm strokes and very well defined contours, offers great power of distinction while still paying attention to the rest of the environment. A neutral beauty.



Tecno Project is the series with the most acceptance for projects in its lifetime.

Built with a compact construction, it is the accessory collection with the widest and most versatile range of items at Sonia.

Simple and cylindrical designs cross each other to shape the design of the bar and repeating this concept throughout the rest of the pieces in this series.

Tecno Project is simple and sophisticated at the same time, a design conceived and developed to create for any environment its own personality.

Construction:

Body components made by mold injection of Zinc alloy and machined brass bar.

Finishes:

Available in polished chrome, polished nickel, brushed nickel as well as black and white epoxy. Other finishes may be available for your project upon request.

Installation:

- Standard drill with peg and screw to wall.
- 3M Backplate for most of its components.

- Drill with peg and screw
- 3M adhesive backplate

DUAL FIX

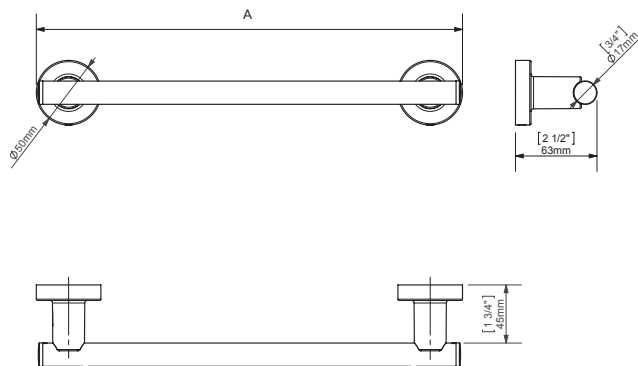
TECNO PROJECT

TOWEL BAR



DUAL FIX

A: 300 mm. (12")	CHROME	Ref. 116799
A: 300 mm. (12")	BLACK	Ref. 166183
A: 300 mm. (12")	WHITE	Ref. 166060
A: 500 mm. (18")	CHROME	Ref. 116805
A: 500 mm. (18")	BLACK	Ref. 166190
A: 500 mm. (18")	WHITE	Ref. 166077
A: 600 mm. (24")	CHROME	Ref. 116812
A: 600 mm. (24")	BLACK	Ref. 166206
A: 600 mm. (24")	WHITE	Ref. 166084
A: 750 mm. (30")	CHROME	Ref. 116829
A: 900 mm. (35")	CHROME	Ref. 120468



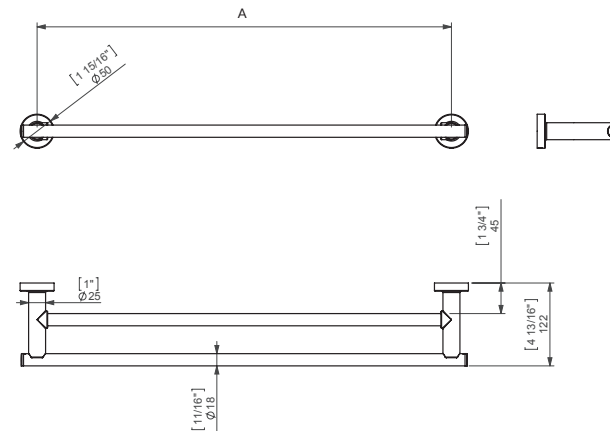
- Bichromated steel wall backplate.
- Zinc die casting support.
- Brass tube Ø18 by 0,8 mm thickness.
- ABS injection caps.
- Stainless steel assembly hardware.

DOUBLE TOWEL BAR



DUAL FIX

A: 600 mm. (24")	CHROME	Ref. 118021
A: 750 mm. (30")	CHROME	Ref. 118038
A: 900 mm. (35")	CHROME	Ref. 159581

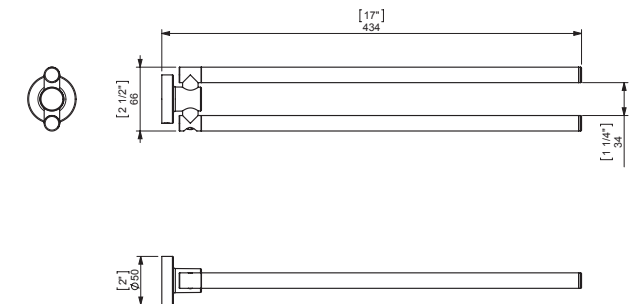


- Bichromated steel wall backplate.
- Zinc die casting support.
- Brass tube Ø18 by 0,8 mm thickness.
- ABS injection caps.
- Stainless steel assembly hardware.

SWING TOWEL BAR



CHROME Ref. 116867

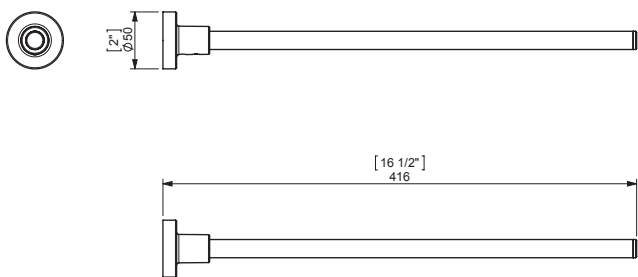


- Bichromated steel wall backplate.
- Zinc die casting support.
- Brass tube Ø18 by 0,8 mm thickness.
- Machined brass caps.
- Stainless steel assembly hardware.

FIXED TOWEL BAR



CHROME Ref. 153312
BLACK Ref. 176793
WHITE Ref. 176854



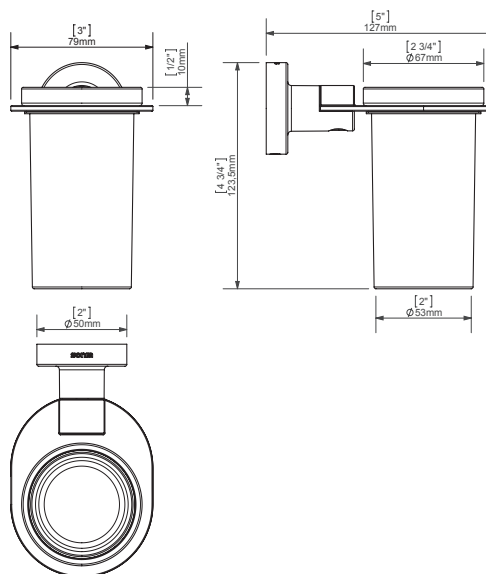
- Bichromated steel wall backplate.
- Zinc die casting support.
- Brass tube Ø18 by 0,8 mm thickness.
- Machined brass caps.
- Stainless steel assembly hardware.

TUMBLER HOLDER



DUAL FIX

CHROME Ref. 116935
BLACK Ref. 166237
WHITE Ref. 166114



- Bichromated steel wall backplate.
- Zinc die casting support.
- Handcrafted blown glass.
- Stainless steel assembly hardware.

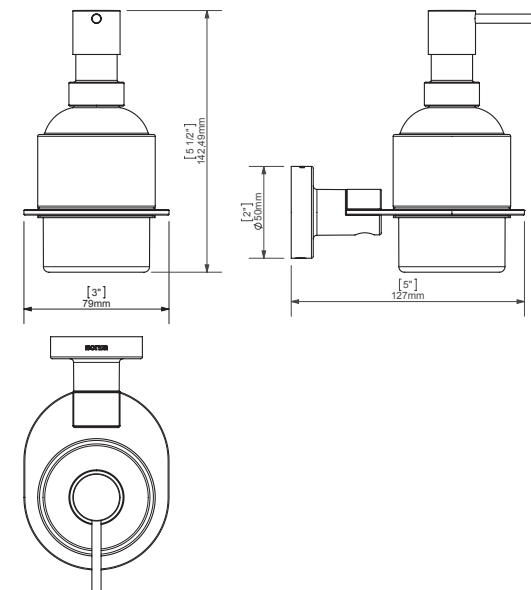
SOAP DISPENSER



DUAL FIX

Capacity 195 ml.

CHROME Ref. 118281
BLACK Ref. 166244
WHITE Ref. 166121



- Bichromated steel wall backplate.
- Zinc die casting support.
- Handcrafted glass blowing 195 ml. machined brass pushbutton.
- Stainless steel assembly hardware.

- Drill with peg and screw
- 3M adhesive backplate

DUAL FIX

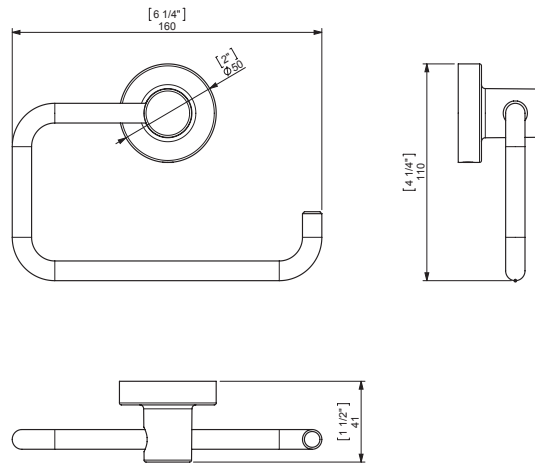
TECNO PROJECT

OPEN TOWEL RING



DUAL FIX

CHROME Ref. 116973
BLACK Ref. 176779
WHITE Ref. 176830



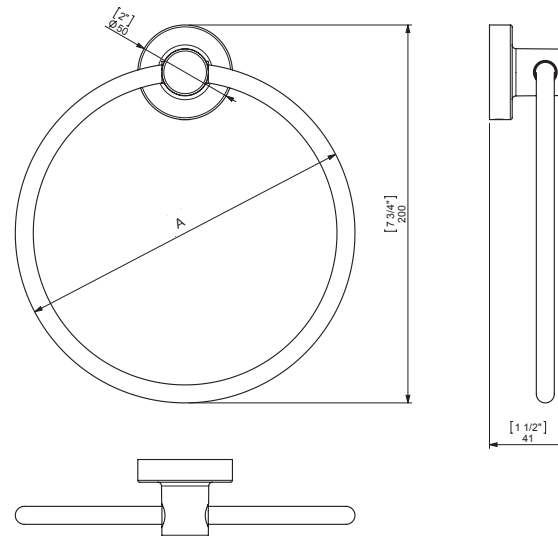
- Bichromated steel wall backplate.
- Zinc die casting support.
- Brass rod \varnothing 10mm.
- Stainless steel assembly hardware.

TOWEL RING



DUAL FIX

A: 180 mm. (7")	CHROME Ref. 117031
A: 180 mm. (7")	BLACK Ref. 176786
A: 180 mm. (7")	WHITE Ref. 176847
A: 210 mm. (8")	CHROME Ref. 116911
A: 210 mm. (8")	BLACK Ref. 166220
A: 210 mm. (8")	WHITE Ref. 166107



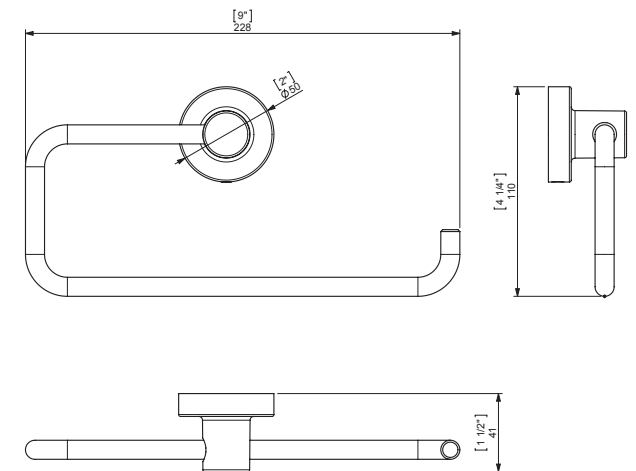
- Bichromated steel wall backplate.
- Zinc die casting support.
- Brass tube \varnothing 9, 5 x 0, 6 mm thickness.
- Stainless steel assembly hardware.

OPEN TOWEL RING



DUAL FIX

CHROME Ref. 116928
BLACK Ref. 176809
WHITE Ref. 176861

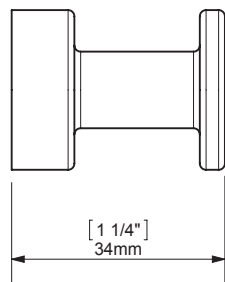
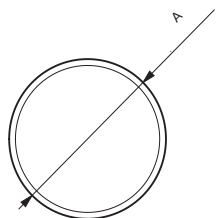


- Bichromated steel wall backplate.
- Zinc die casting support.
- Brass rod \varnothing 10mm.
- Stainless steel assembly hardware.

ROBE HOOK



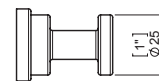
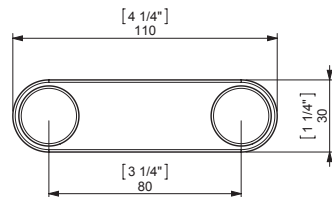
A = Ø25 mm. (1")	CHROME	Ref. 118090
A = Ø25 mm. (1")	BLACK	Ref. 166213
A = Ø25 mm. (1")	WHITE	Ref. 166091
A = Ø35 mm. (13/8")	CHROME	Ref. 116881
A = Ø35 mm. (13/8")	BLACK	Ref. 170364
A = Ø35 mm. (13/8")	WHITE	Ref. 176816



DOUBLE ROBE HOOK



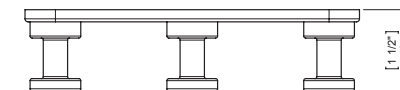
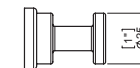
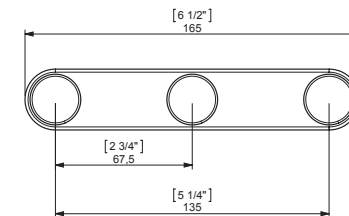
CHROME	Ref. 116898
BLACK	Ref. 172320
WHITE	Ref. 172405



TRIPLE ROBE HOOK



CHROME	Ref. 116904
BLACK	Ref. 176762
WHITE	Ref. 176823



- Zinc die casting backplate.
- Body of brass tube.
- Stainless steel assembly hardware.

- Zinc die casting backplate.
- Body of brass tube.
- Stainless steel assembly hardware.

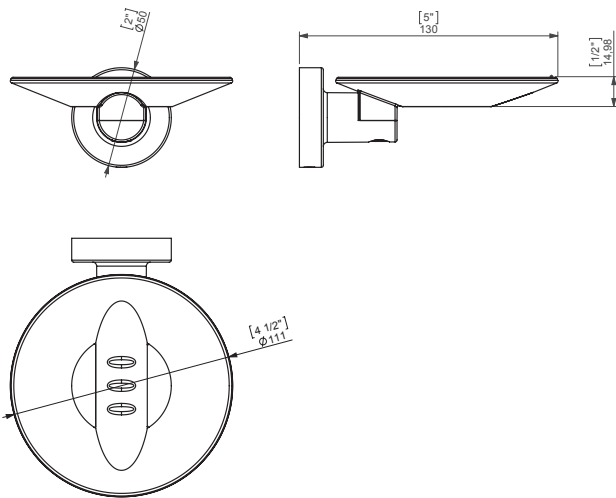
- Zinc die casting backplate.
- Body of brass tube.
- Stainless steel assembly hardware.

METAL SOAP DISH



DUAL FIX

OPEN	CHROME	Ref. 116959
OPEN	BLACK	Ref. 173846
OPEN	WHITE	Ref. 177370
CLOSE	CHROME	Ref. 116942
CLOSE	BLACK	Ref. 166251
CLOSE	WHITE	Ref. 166138



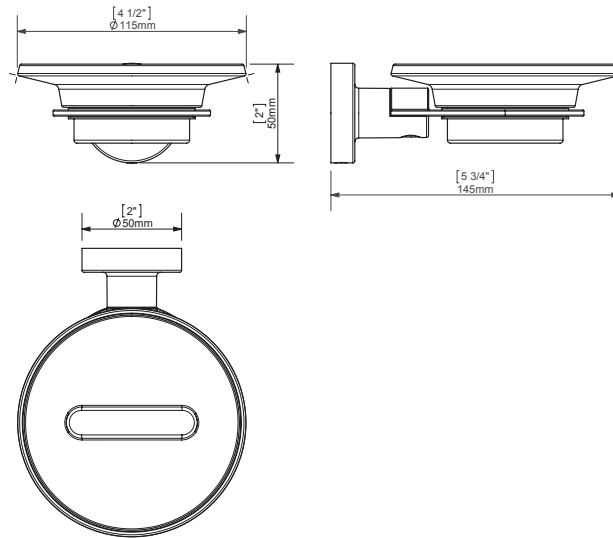
- Bichromated steel wall backplate.
- Zinc die casting support.
- Plate of Zinc die casting.
- Stainless steel assembly hardware.

SOAP DISH



DUAL FIX

CHROME	Ref. 117048
BLACK	Ref. 166268
WHITE	Ref. 166145



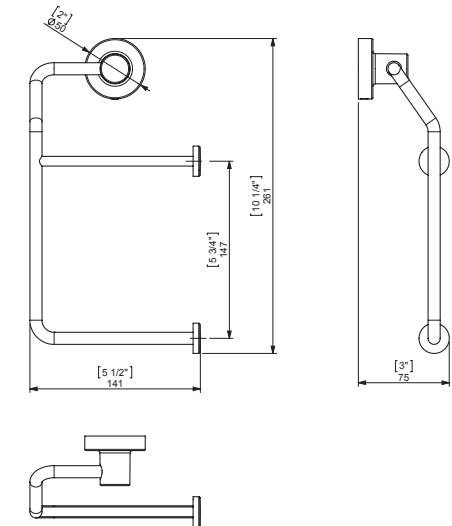
- Bichromated steel wall backplate.
- Zinc die casting support.
- Handcrafted blown glass.
- Stainless steel assembly hardware.

DOUBLE ROLL HOLDER



DUAL FIX

CHROME	Ref. 116980
BLACK	Ref. 173853
WHITE	Ref. 177356



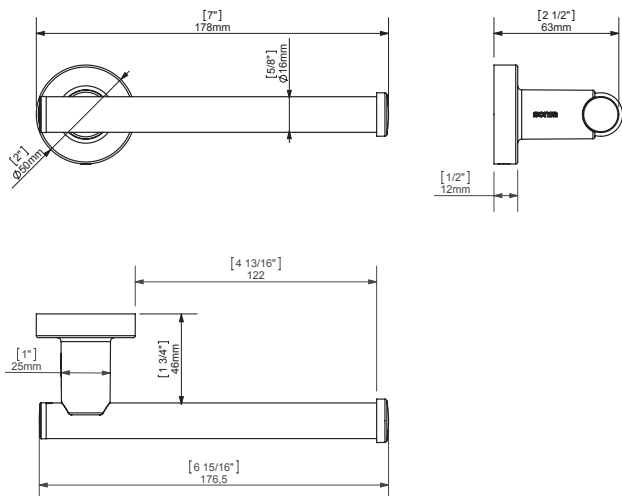
- Bichromated steel wall backplate.
- Zinc die casting support.
- Brass tube Ø18 by 0, 8 mm thickness.
- With Zinc die casting caps.
- Stainless steel assembly hardware.

OPEN TOILET ROLL HOLDER



DUAL FIX

CHROME Ref. 116997
BLACK Ref. 166275
WHITE Ref. 166152



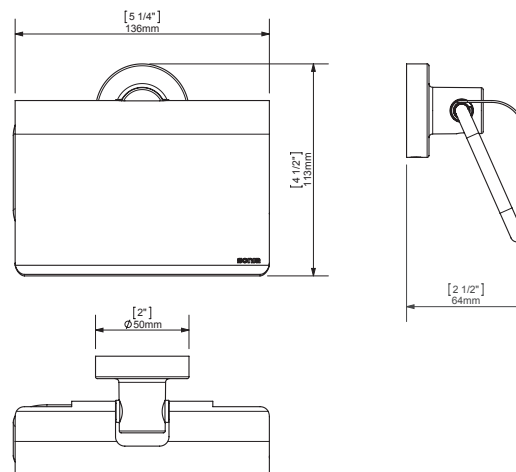
- Bichromated steel wall backplate.
- Zinc die casting support.
- Brass tube Ø18 by 0, 8 mm thickness.
- With Zinc die casting caps.
- Stainless steel assembly hardware.

TOILET ROLL HOLDER



DUAL FIX

CHROME Ref. 116966
BLACK Ref. 166282
WHITE Ref. 166169



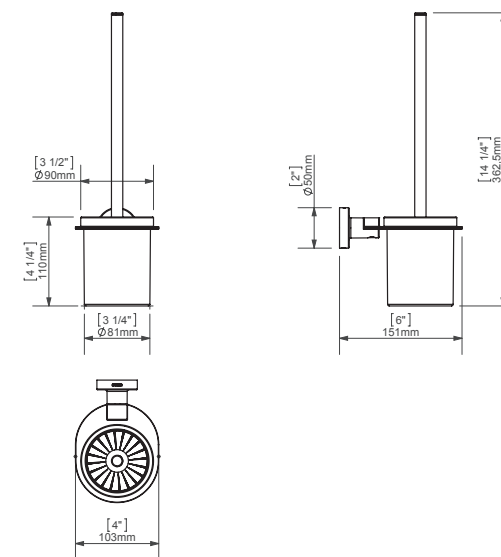
- Bichromated steel wall backplate.
- Zinc die casting support.
- Lid in brass plate thickness 1mm
- Brass rod Ø7mm.
- Stainless steel assembly hardware.

WC BRUSH SET



DUAL FIX

CHROME Ref. 117000
BLACK Ref. 166299
WHITE Ref. 166176



- Bichromated steel wall backplate.
- Zinc die casting support.
- Handmade blown glass.

- Brush handle of brass tube.
- Machined brass caps.
- Stainless steel assembly hardware.

- Drill with peg and screw
- 3M adhesive backplate

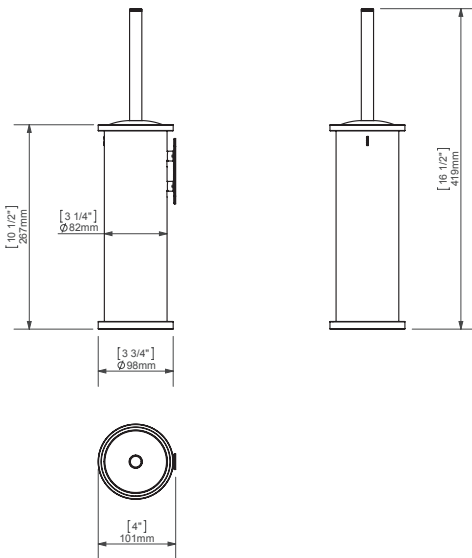
DUAL FIX

TECNO PROJECT

METAL WC BRUSH SET



CHROME Ref. 117017

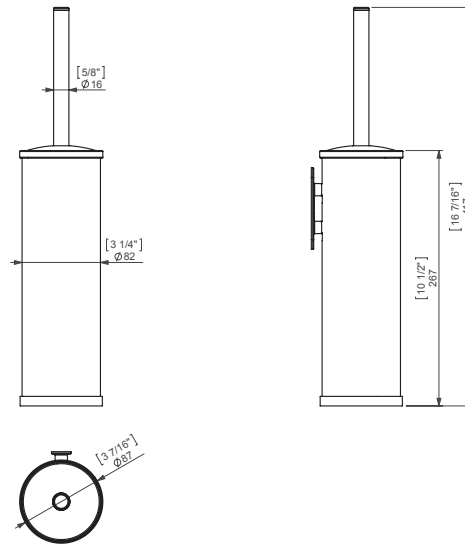


- Zinc die casting backplate.
- Body of brass tube.
- Inside polypropylene cover.
- Brush handle of brass tube.
- Machined brass caps.

METAL WC BRUSH SET



CHROME Ref. 052929
BLACK Ref. 168200
WHITE Ref. 175918

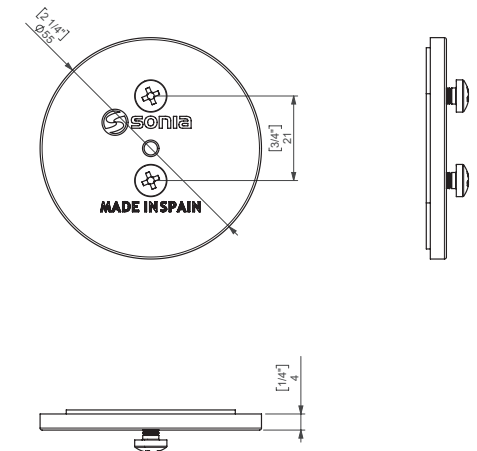


- Zinc die casting backplate.
- Body of brass tube.
- Inside polypropylene cover.
- Brush handle of brass tube.
- Machined brass caps.

ADHESIVE BACKPLATE



CHROME Ref. 177059
BLACK Ref. 177066
WHITE Ref. 177073



- Aluminium plate 4 mm.